

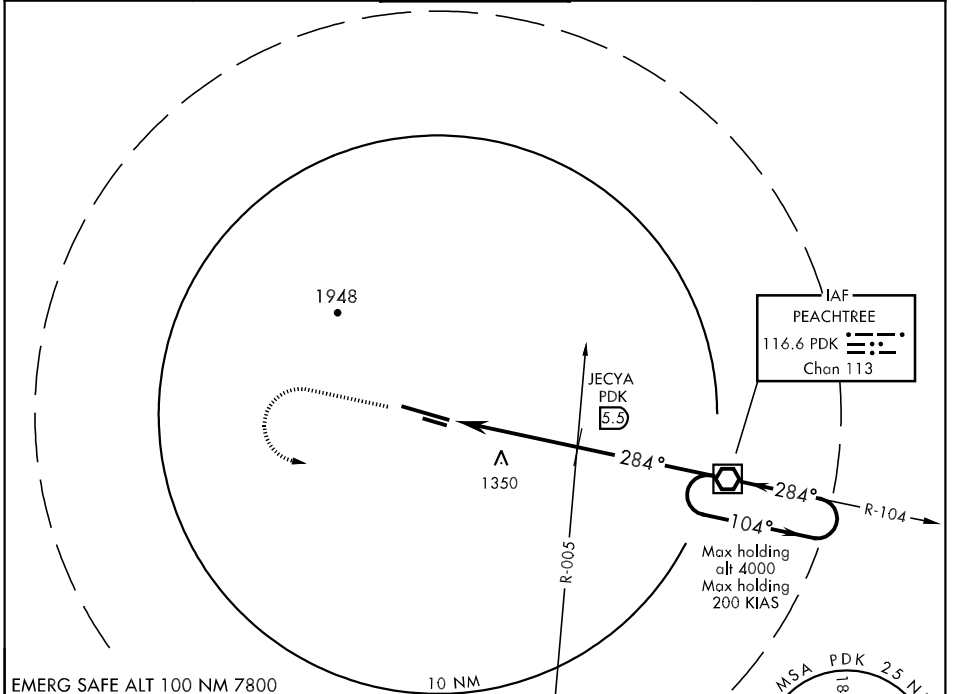
MARIETTA, GEORGIA

COPTER VOR 284°

VOR/DME PDK 116.6 Chan 113	APCH CRS 284°	Rwy Idg 10,000 TDZE 1015 Arpt Elev 1068	AL-959 [USAF]	DOBBINS ARB (KMGE)
--	-------------------------	--	---------------	--------------------

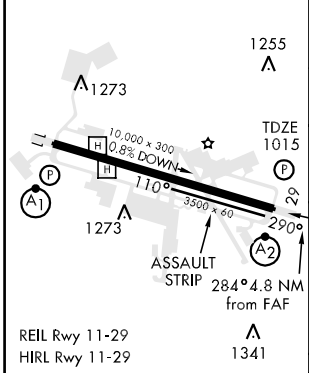
<p>▼ * When ALS inop, increase RVR to 50 and vis to 1 mile.</p>	<p>SALS A2</p>	<p>MISSED APPROACH: Climb to 4000 turn left direct PDK VOR/DME and hold.</p>
---	--------------------	--

ATIS ★ 269.5	ATLANTA APP CON 121.0 268.7	DOBBINS TOWER ★ 120.75 370.875	GND CON 125.3 275.8	ASR/PAR
------------------------	---------------------------------------	--	-------------------------------	---------

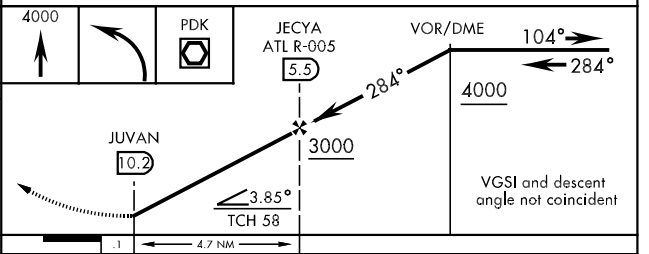
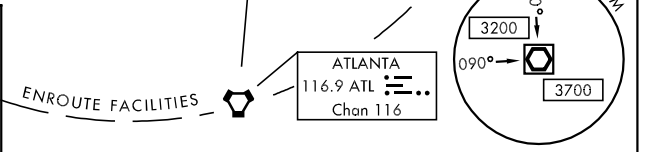


EMERG SAFE ALT 100 NM 7800

ELEV 1068



FAF to MAP 4.7 NM					
Knots	45	60	75	90	105
Min:Sec	6:16	4:42	3:46	3:08	2:41



CATEGORY	COPTER		
H-284° *	1600/50	532	(600-1)

MARIETTA, GEORGIA 33°55'N-84°31'W DOBBINS ARB (KMGE)

Amdt 2 09183

COPTER VOR 284°

SE-4, 22 OCT 2009 to 19 NOV 2009

SE-4, 22 OCT 2009 to 19 NOV 2009