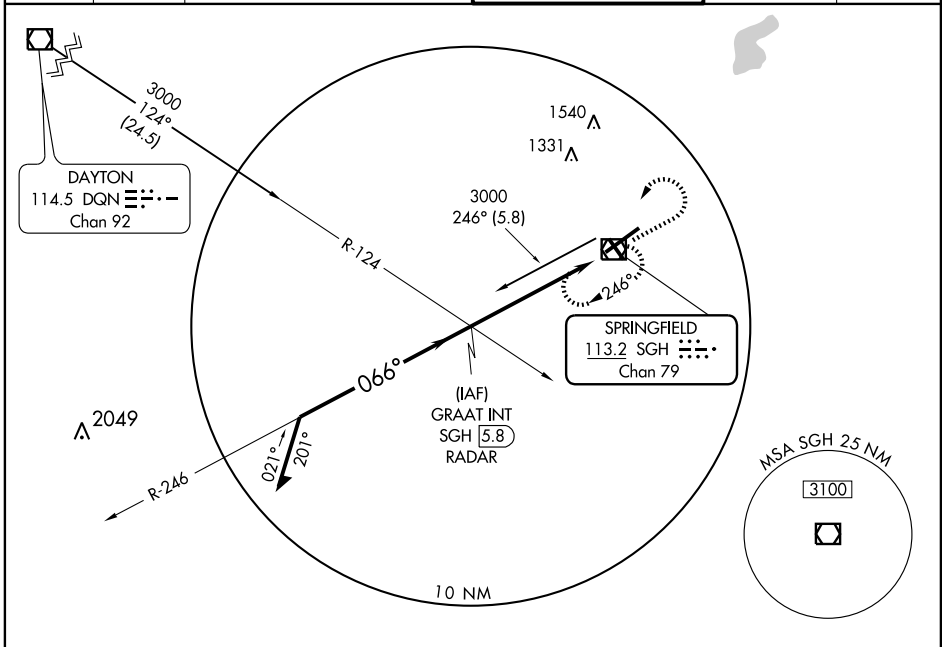


VOR/DME SGH <b>113.2</b> Chan <b>79</b>	APP CRS <b>066°</b>	Rwy Idg TDZE Apt Elev	<b>9009</b> <b>1052</b> <b>1052</b>
---	------------------------	-----------------------------	---

# VOR or GPS RWY 6

SPRINGFIELD-BECKLEY MUNI (SGH)

<p>▼ When Control Tower closed, use ▲ NA Wright-Patterson AFB altimeter setting.</p>		<p>MISSED APPROACH: Climb to 3000, then left turn direct SGH VOR/DME and hold.</p>				
ASOS <b>134.975</b>	ATIS <b>257.875</b>	DAYTON APP CON <b>118.85 126.5 127.225 327.1</b>		SPRINGFIELD TOWER ★ <b>120.7</b> (CTAF) <b>291.775</b>	GND CON <b>121.7 225.4</b>	UNICOM <b>122.95</b>



EC-2, 22 OCT 2009 to 19 NOV 2009

EC-2, 22 OCT 2009 to 19 NOV 2009

<p>Remain within 10 NM</p> <p>3000</p> <p>246°</p> <p>066°</p> <p>2800</p> <p>2.93° TCH 45</p> <p>5.5 NM</p> <p>VOR/DME</p>		<p>3000</p> <p>SGH</p> <p>ELEV 1052</p> <p>113.2</p>	<p>TDZE 1052</p> <p>066° to SGH VOR/DME</p>	
CATEGORY	A	B	C	D
S-6	1480-1	428 (500-1)	1480-1¼ 428 (500-1¼)	1480-1½ 428 (500-1½)
CIRCLING	1480-1 428 (500-1)	1520-1 468 (500-1)	1520-1½ 468 (500-1½)	1620-2 568 (600-2)
WRIGHT-PATTERSON AFB ALTIMETER SETTING MINIMUMS				
S-6	1540-1	488 (500-1)	1540-1¼ 488 (500-1¼)	1540-1½ 488 (500-1½)
CIRCLING	1540-1 488 (500-1)	1560-1 508 (600-1)	1560-1½ 508 (600-1½)	1660-2 608 (700-2)

HIRL Rwy 6-24 **1**  
MIRL Rwy 15-33 **1**  
REIL Rws 6, 15 and 33 **1**