

SPRINGFIELD, OHIO

AL-958 (FAA)

VOR/DME SGH <b>113.2</b> Chan <b>79</b>	APP CRS <b>323°</b>	Rwy Idg TDZE Apt Elev	<b>5499</b> <b>1047</b> <b>1051</b>
---	------------------------	-----------------------------	---

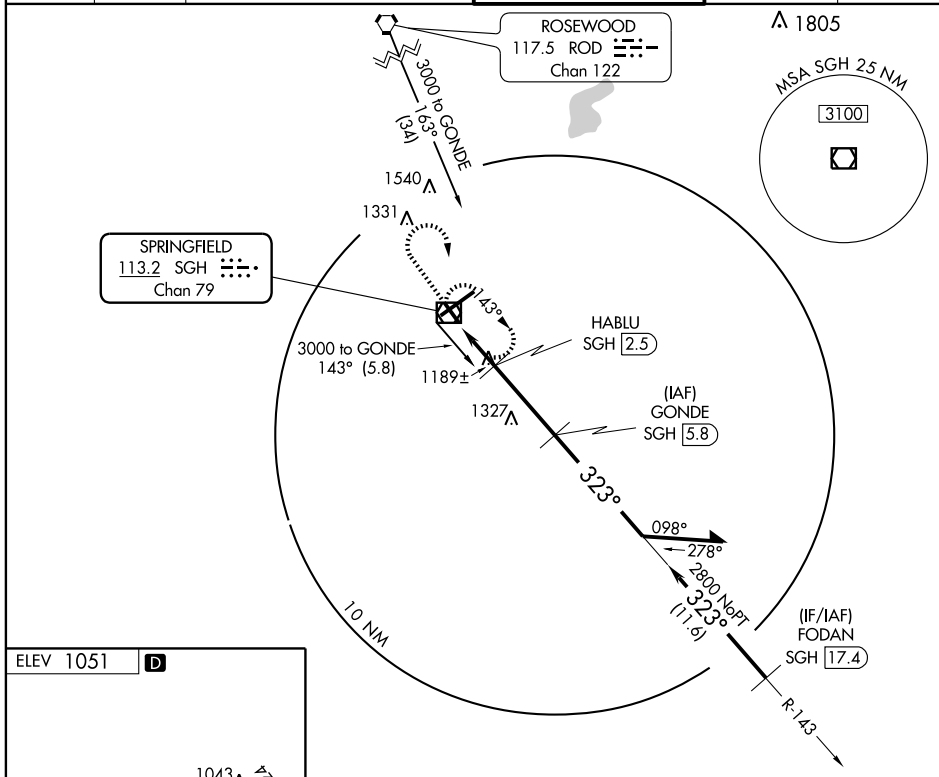
# VOR/DME RWY 33

SPRINGFIELD-BECKLEY MUNI (SGH)

**▼** When local altimeter setting not received, use Wright-Patterson AFB altimeter setting and increase all MDAs 60 feet and increase Cat C/D visibility ¼ mile.  
**▲ NA** Visibility reduction by helicopters NA.

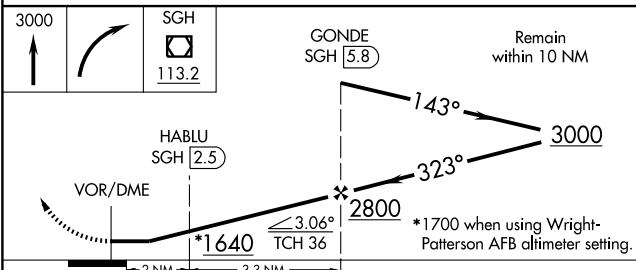
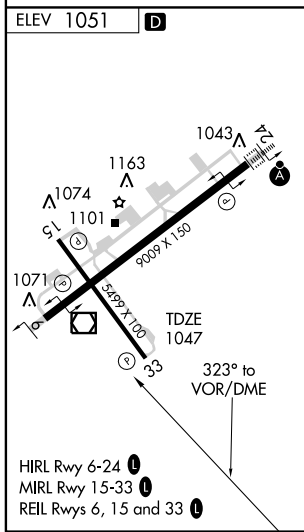
**MISSED APPROACH:** Climb to 3000 then right turn direct SGH VOR/DME and hold.

ASOS <b>134.975</b>	ATIS <b>257.875</b>	DAYTON APP CON <b>126.5 327.1</b>	SPRINGFIELD TOWER ★ <b>120.7 (CTAF) 0 291.775</b>	GND CON <b>121.7 225.4</b>	UNICOM <b>122.95</b>
------------------------	------------------------	--------------------------------------	--	-------------------------------	-------------------------



EC-2, 22 OCT 2009 to 19 NOV 2009

EC-2, 22 OCT 2009 to 19 NOV 2009



CATEGORY	A	B	C	D
S-33	1440-1 393 (400-1)			1440-1½ 393 (400-1½)
CIRCLING	1480-1 429 (500-1)	1520-1 469 (500-1)	1520-1½ 469 (500-1½)	1620-2 569 (600-2)

SPRINGFIELD, OHIO  
Orig 09295

39°50'N - 83°50'W

# SPRINGFIELD-BECKLEY MUNI (SGH) VOR/DME RWY 33