

VOR/DME SGH 113.2 Chan 79	APP CRS 235°	Rwy Idg TDZE 1048 Apt Elev 1051	9009
---	------------------------	---	-------------

VOR RWY 24

SPRINGFIELD-BECKLEY MUNI (SGH)

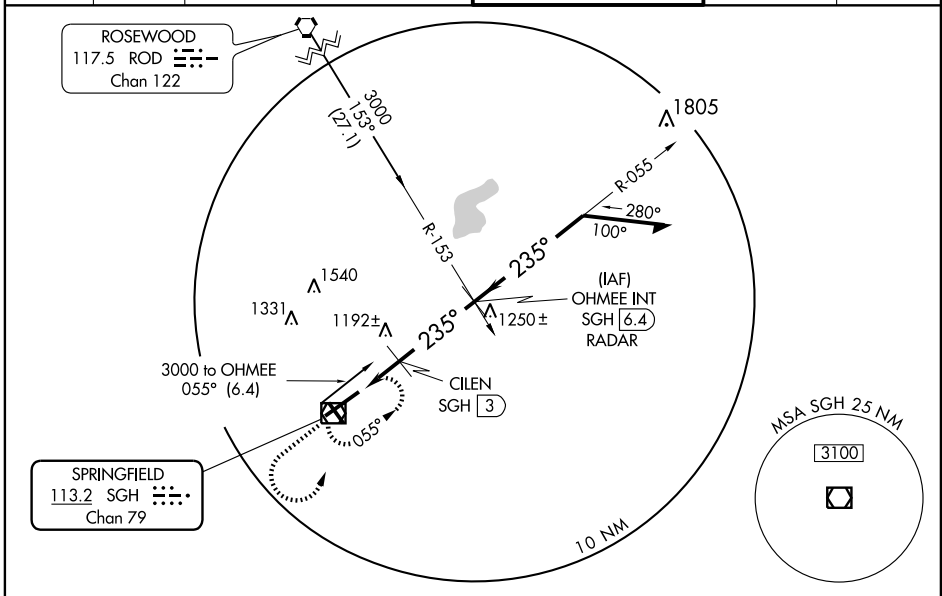
NA When local altimeter setting not received, use Wright-Patterson AFB altimeter setting and increase all MDAs 60 feet and increase S-24 Cats C and D and Circling Cat C visibility ¼ mile. VDP NA when using Wright-Patterson AFB altimeter setting. ALSF-2 reverts to SSALR when tower is closed. For inoperative ALSF-2/SSALR, increase CILEN fix minimums S-24 Cat D visibility to 1¼, when using Wright-Patterson AFB altimeter setting increase CILEN fix minimums S-24 Cat D visibility to 1½.

ALSF-2



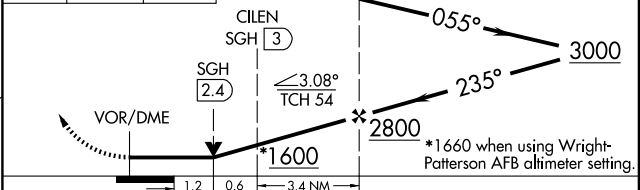
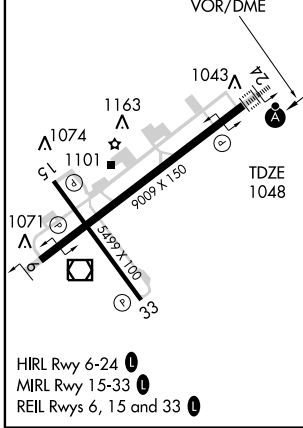
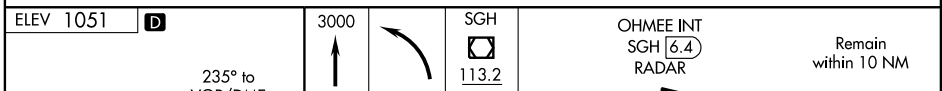
MISSED APPROACH: Climb to 3000 then left turn direct SGH VOR/DME and hold.

ASOS 134.975	ATIS 257.875	DAYTON APP CON 126.5 327.1	SPRINGFIELD TOWER ★ 120.7 (CTAF) 0 291.775	GND CON 121.7 225.4	UNICOM 122.95
------------------------	------------------------	--------------------------------------	--	-------------------------------	-------------------------



EC-2, 22 OCT 2009 to 19 NOV 2009

EC-2, 22 OCT 2009 to 19 NOV 2009



CATEGORY	A		B		C		D	
	S-24	1600-½	552 (600-1)	1600-1	552 (600-1)	1600-1	552 (600-1)	1600-1¼
CIRCLING	1600-1	549 (600-1)	1600-1	549 (600-1)	1600-1½	549 (600-1½)	1620-2	569 (600-2)
CILEN FIX MINIMUMS								
S-24	1460-½	412 (500-½)	1460-¾	412 (500-¾)	1460-1	412 (500-1)	1460-1	412 (500-1)
CIRCLING	1480-1	429 (500-1)	1520-1	469 (500-1)	1520-1½	469 (500-1½)	1620-2	569 (600-2)