

RNAV (GPS) RWY 20

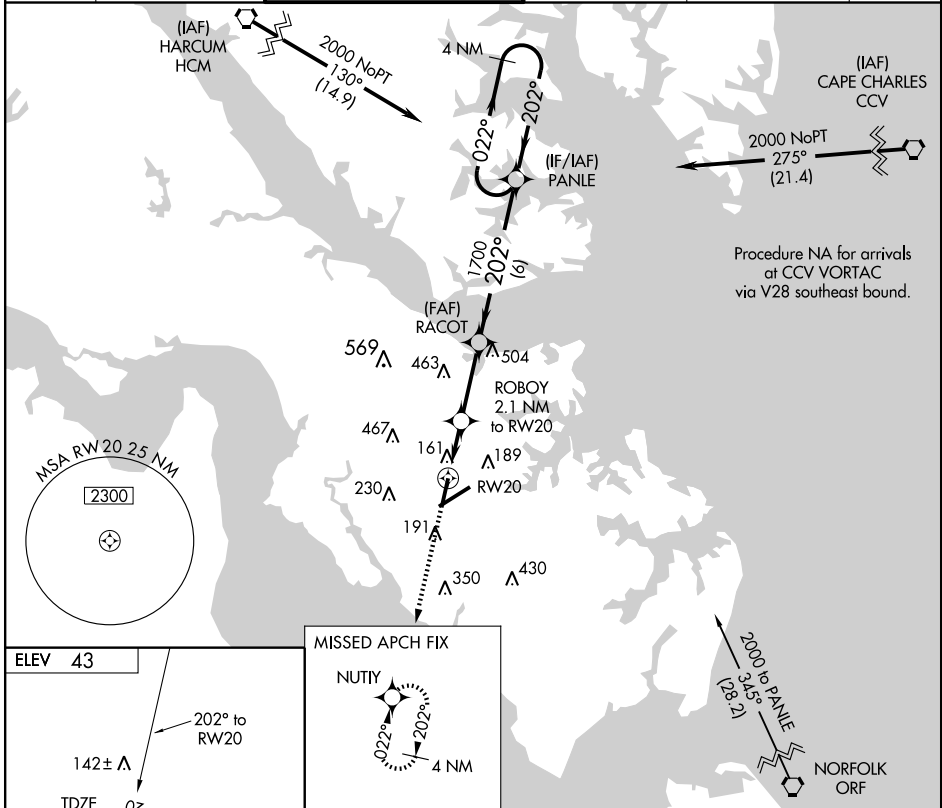
NEWPORT NEWS / WILLIAMSBURG INTL (PHF)

APP CRS	Rwy Idg	6526
202°	TDZE	43
	Apt Elev	43

⚠ When local altimeter setting not received, use Norfolk Intl altimeter setting and increase all MDA 60 feet and LNAV Cat D visibility ¼ mile. VDP NA when using Norfolk Intl altimeter setting. Visibility reduction by helicopters NA. DME/DME RNP-0.3 NA.

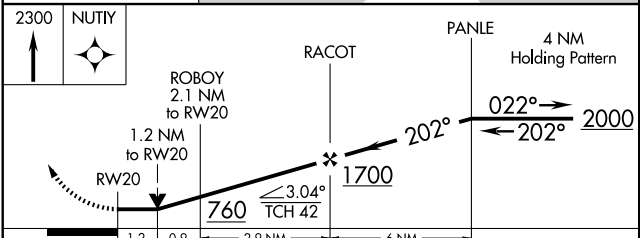
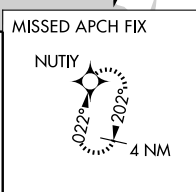
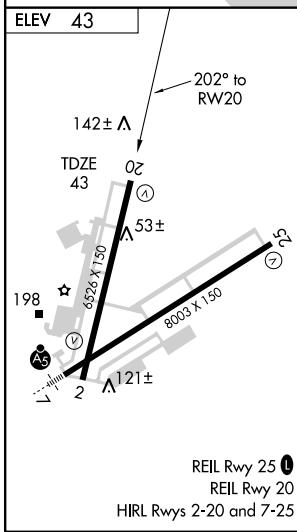
⚠ MISSED APPROACH: Climb to 2300 direct NUTTY and hold.

ATIS 128.65	NORFOLK APP CON 125.7	NEWPORT NEWS TOWER ★ 118.7(CTAF) 0 257.9	GND CON 121.9 348.6	CLNC DEL 121.65 225.4	UNICOM 122.95
-----------------------	---------------------------------	--	-------------------------------	---------------------------------	-------------------------



NE-3, 22 OCT 2009 to 19 NOV 2009

NE-3, 22 OCT 2009 to 19 NOV 2009



CATEGORY	A	B	C	D
LNAV MDA	460-1	417 (500-1)	460-1½	417 (500-1½)
CIRCLING	540-1	497 (500-1)	540-1½	600-2 497 (500-1½) 557 (600-2)