

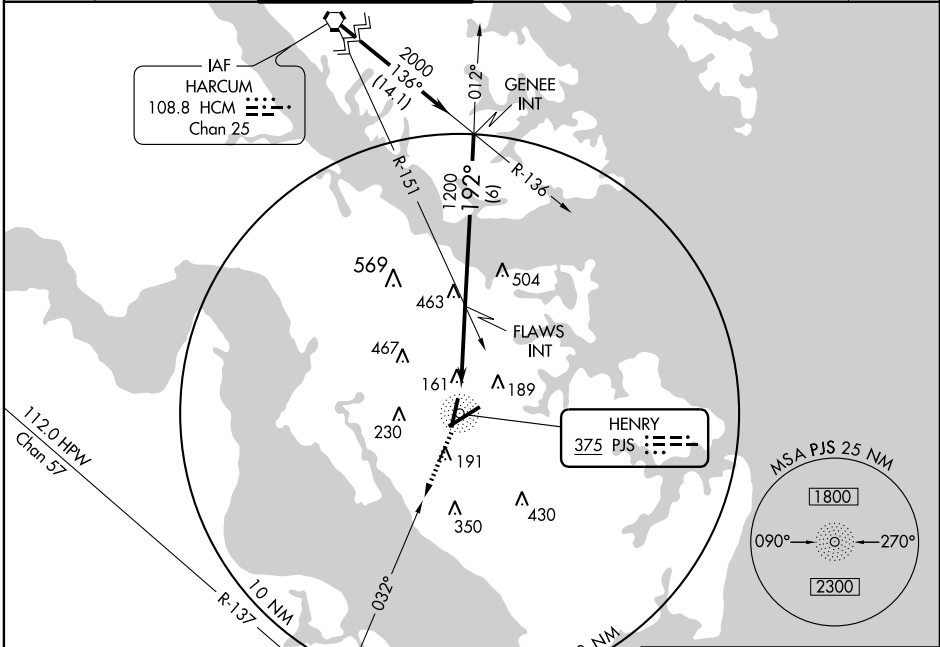
NDB RWY 20

NEWPORT NEWS / WILLIAMSBURG INTL (PHF)

NDB PJS 375	APP CRS 192°	Rwy Idg TDZE Apt Elev	6526 43 43
-----------------------	------------------------	-----------------------------	---------------------------------------

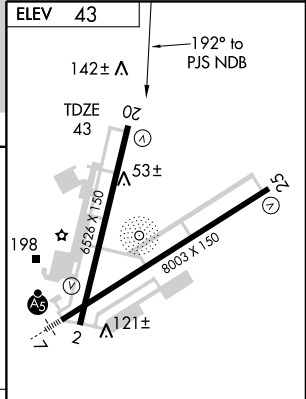
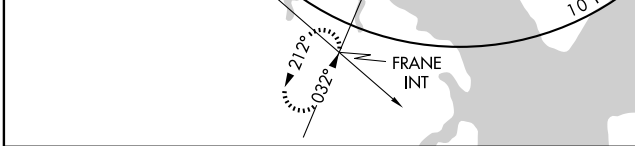
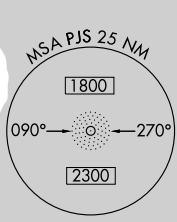
MISSED APPROACH: Climb to 2000 via PJS NDB bearing 212° to FRANE Int and hold.

ATIS 128.65	NORFOLK APP CON 125.7	NEWPORT NEWS TOWER★ 118.7 (CTAF) 0 257.9	GND CON 121.9 348.6	CLNC DEL 121.65 225.4	UNICOM 122.95
-----------------------	---------------------------------	---	-------------------------------	---------------------------------	-------------------------



NE-3, 22 OCT 2009 to 19 NOV 2009

NE-3, 22 OCT 2009 to 19 NOV 2009



2000	FRANE INT	FLAWS INT	GENEV INT	2000
PJS BRG 212° 375				Procedure Turn NA
NDB				
0.5	3.5 NM		6 NM	

CATEGORY	A	B	C	D
S-20	860-1 817 (900-1)	860-1¼ 817 (900-1¼)	860-2½ 817 (900-2½)	860-2¾ 817 (900-2¾)
CIRCLING	860-1 817 (900-1)	860-1¼ 817 (900-1¼)	860-2½ 817 (900-2½)	860-2¾ 817 (900-2¾)

REIL Rwy 25 **1**
REIL Rwy 20
HIRL Rwys 2-20 and 7-25

NDB RWY 20