

LOC/DME I-PHF 110.1 Chan 38	APP CRS 067°	Rwy Idg 8003 TDZE 40 Apt Elev 43
--	------------------------	---

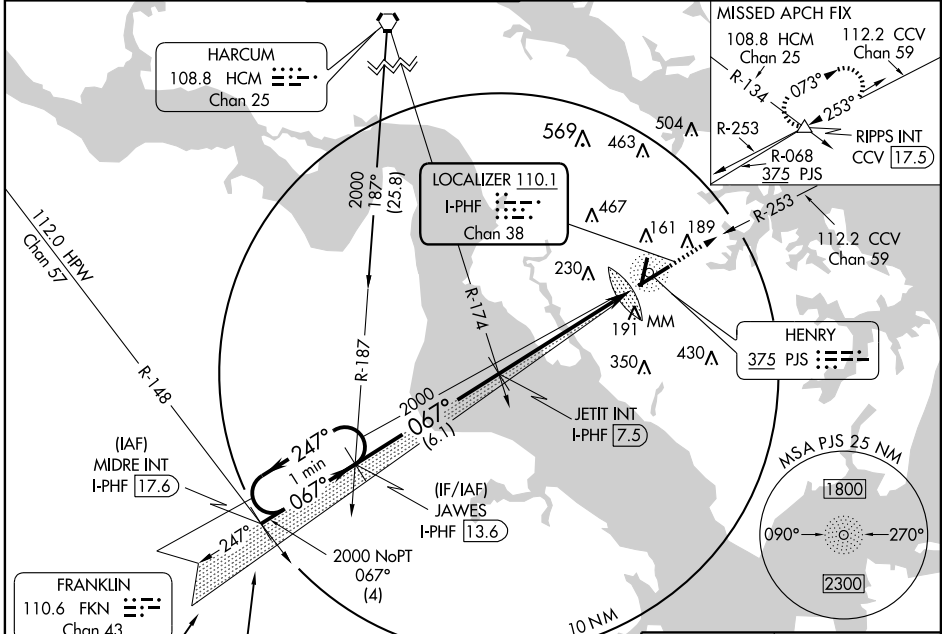
ILS or LOC RWY 7

NEWPORT NEWS / WILLIAMSBURG INTL (PHF)

When local altimeter setting not received, use Norfolk Intl altimeter setting and increase all DA/MDA 60 feet. Increase S-ILS 7 visibility ¼ mile all Cats, increase S-LOC 7 Cats C/D visibility ¼ mile. VDP NA when using Norfolk Intl altimeter setting. *RVR 1800 authorized with the use of FD or AP or HUD to DA.

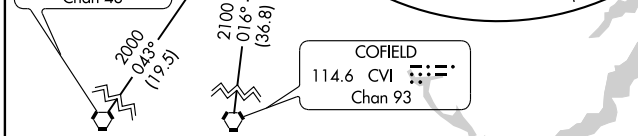
MALSR
MISSED APPROACH: Climb to 2500 via heading 067° and CCV VORTAC R-253 to RIPPS INT/CCV 17.5 DME and hold.

ATIS 128.65	NORFOLK APP CON 125.7	NEWPORT NEWS TOWER* 118.7(CTAF) 257.9	GND CON 121.9 348.6	CLNC DEL 121.65 225.4	UNICOM 122.95
-----------------------	---------------------------------	---	-------------------------------	---------------------------------	-------------------------

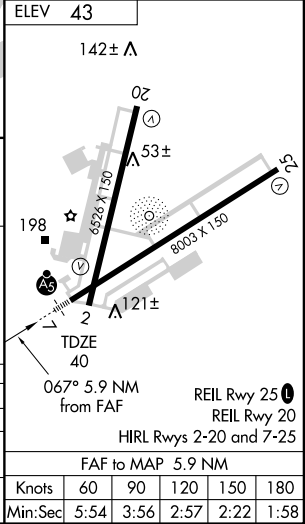


NE-3, 22 OCT 2009 to 19 NOV 2009

NE-3, 22 OCT 2009 to 19 NOV 2009



JAWES I-PHF 13.6	JETIT INT I-PHF 7.5	2500 ↑ HDG 067°	CCV R-253 112.2	RIPPS △
<p>One Minute Holding Pattern</p> <p>GS 3.00° TCH 51</p> <p>2000 ← 247° → 067° → 2000</p> <p>2000</p> <p>6.1 NM 4.8 NM 0.6 0.5</p>				
CATEGORY	A	B	C	D
S-ILS 7	* 240/24 200 (200-½)			
S-LOC 7	440/24 400 (400-½)		440/40 400 (400-¾)	
CIRCLING	540-1 497 (500-1)		540-1½ 600-2 557 (600-2)	



Knots	60	90	120	150	180
Min:Sec	5:54	3:56	2:57	2:22	1:58