

# RNAV (GPS) RWY 7

CHICAGO/ROCKFORD INTL (RFD)

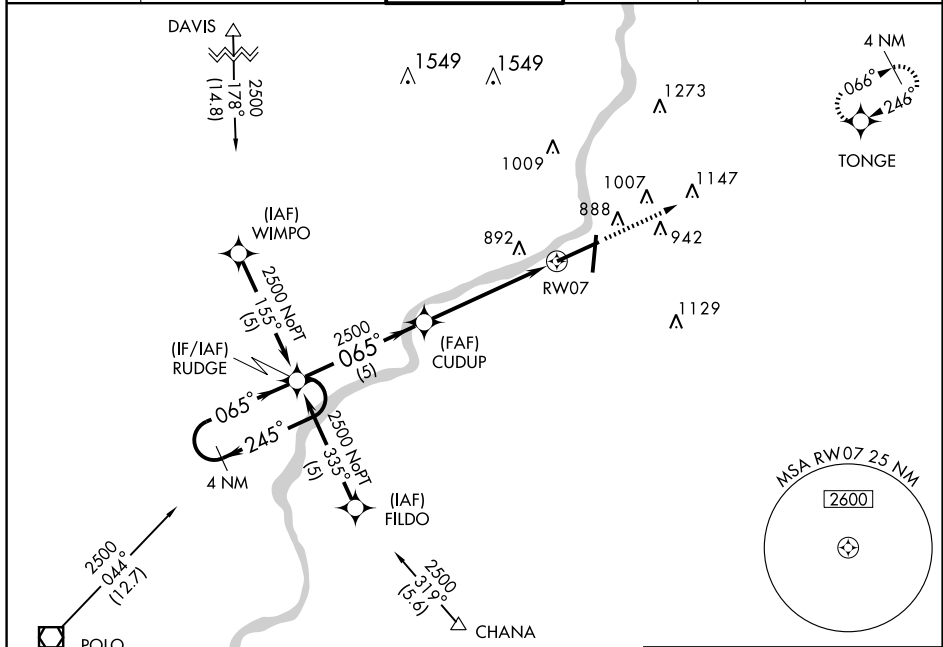
APP CRS	Rwy Idg	<b>10004</b>
<b>065°</b>	TDZE	<b>742</b>
	Apt Elev	<b>742</b>

Baro-VNAV NA below -16°C (3°F).  
GPS or RNP-0.3 Required.  
DME/DME RNP-0.3 NA.



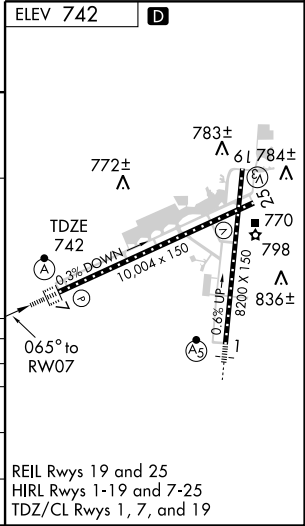
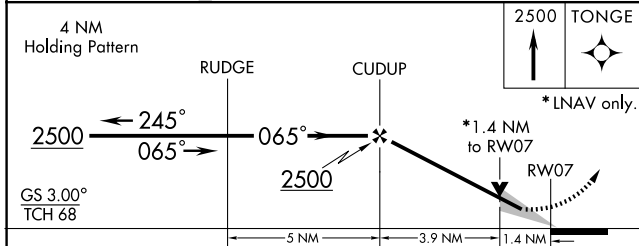
MISSED APPROACH: Climb to 2500  
direct TONGE WP and hold.

ATIS <b>127.6</b>	ROCKFORD APP CON <b>121.0 327.0</b>	ROCKFORD TOWER <b>118.3 239.0</b>	GND CON <b>121.9 239.0</b>	CLNC DEL <b>119.25</b>	UNICOM <b>122.95</b>
----------------------	--	--------------------------------------	-------------------------------	---------------------------	-------------------------



EC-3, 22 OCT 2009 to 19 NOV 2009

EC-3, 22 OCT 2009 to 19 NOV 2009



CATEGORY	A	B	C	D
GLS PA DA	NA			
LNAV/VNAV	1140/40		398 (400-¾)	
LNAV MDA	1240/24	498 (500-½)	1240/40 498 (500-¾)	1240/50 498 (500-1)
CIRCLING	1240-1¼	498 (500-1¼)	1240-1½ 498 (500-1½)	1320-2 578 (600-2)