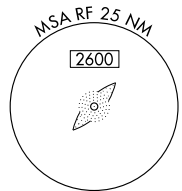
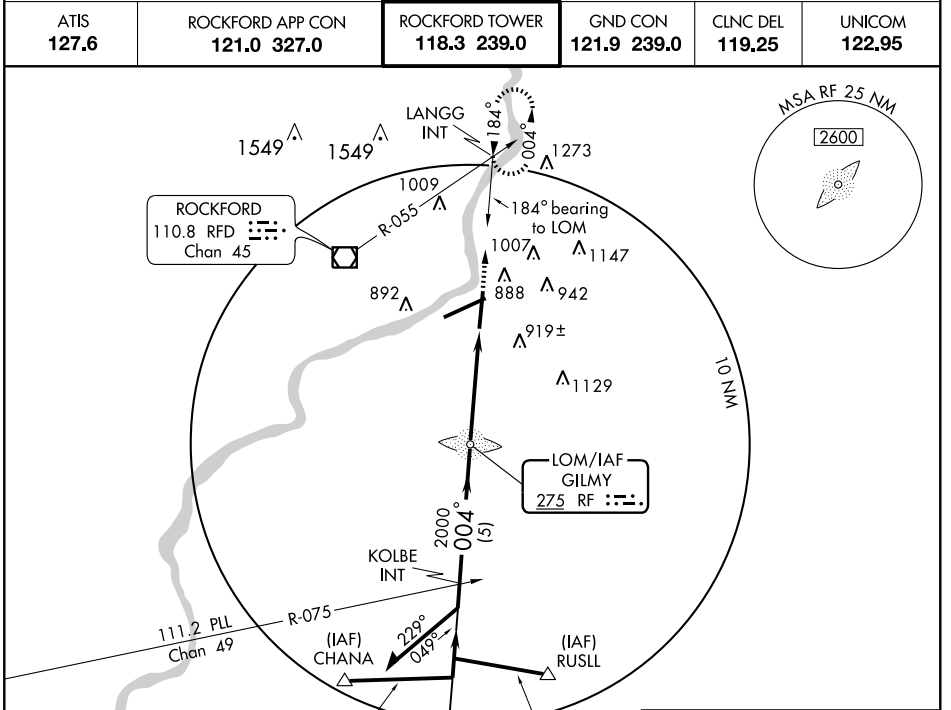


NDB RWY 1

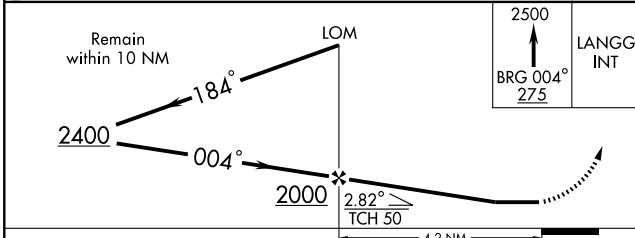
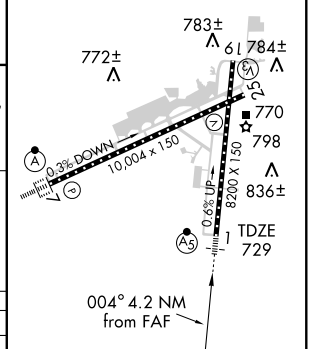
CHICAGO/ROCKFORD INTL (RFD)

LOM RF 275	APP CRS 004°	Rwy Idg 8199
		TDZE 729
		Apt Elev 742

NA ASR	MALSR	MISSED APPROACH: Climb to 2500 via 004° bearing from RF LOM to LANGG Int and hold.			
		ATIS 127.6	ROCKFORD APP CON 121.0 327.0	ROCKFORD TOWER 118.3 239.0	GND CON 121.9 239.0
UNICOM 122.95					



ELEV 742	D
REIL Rwy 19 and 25 HIRL Rwy 1-19 and 7-25 TDZ/CL Rwy 1, 7, and 19	



CATEGORY	A	B	C	D
S-1	1220/40 491 (500-3/4)			1220/60 491 (500-1/4)
CIRCLING	1220-1 478 (500-1)	1240-1 498 (500-1)	1240-1½ 498 (500-1½)	1320-2 578 (600-2)

FAF to MAP 4.2 NM					
Knots	60	90	120	150	180
Min:Sec	4:12	2:48	2:06	1:41	1:24

EC-3, 22 OCT 2009 to 19 NOV 2009

EC-3, 22 OCT 2009 to 19 NOV 2009