

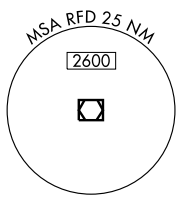
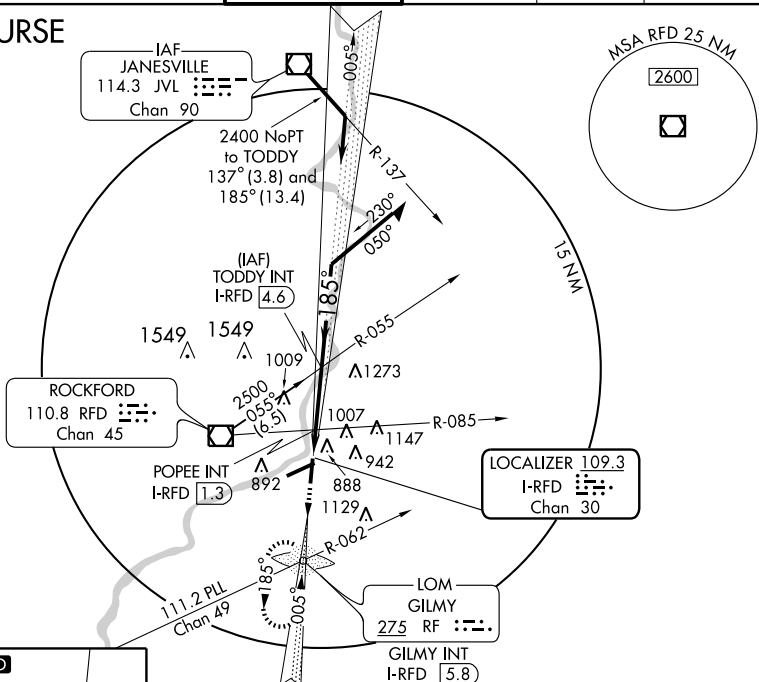
LOC/DME I-RFD <b>109.3</b> Chan <b>30</b>	APP CRS <b>185°</b>	Rwy Idg TDZE <b>736</b> Apt Elev <b>742</b>	<b>8099</b>
---	------------------------	---	-------------

# LOC BC RWY 19

CHICAGO/ROCKFORD INTL (RFD)

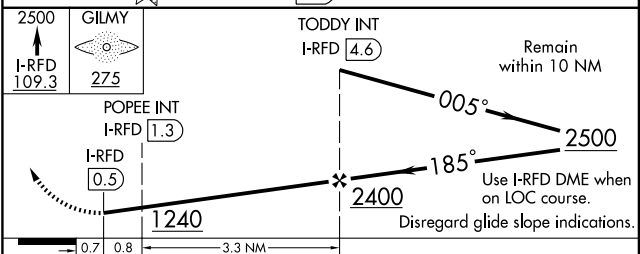
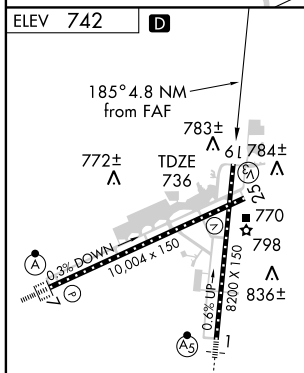
ASR		MISSED APPROACH: Climb to 2500 via I-RFD LOC S course to GILMY LOM/Int/I-RFD 5.8 DME and hold.			
ATIS <b>127.6</b>	ROCKFORD APP CON <b>121.0 327.0</b>	ROCKFORD TOWER <b>118.3 239.0</b>	GND CON <b>121.9 239.0</b>	CLNC DEL <b>119.25</b>	UNICOM <b>122.95</b>

## BACK COURSE



EC-3, 22 OCT 2009 to 19 NOV 2009

EC-3, 22 OCT 2009 to 19 NOV 2009



REIL Rwy 19 and 25  
HIRL Rwy 1-19 and 7-25  
TDZ/CL Rwy 1, 7, and 19

FAF to MAP 4.1 NM

Knots	60	90	120	150	180
Min:Sec	4:06	2:44	2:03	1:38	1:22

CATEGORY	A	B	C	D
S-19	1240-1 504 (500-1)		1240-1½ 504 (500-1½)	
CIRCLING	1240-1 504 (600-1)		1240-1½ 504 (600-1½)	1320-2 584 (600-2)
POPEE INT/DME MINIMUMS				
S-19	1140-1 404 (400-1)		1140-1¼ 404 (400-1¼)	
CIRCLING	1220-1 484 (500-1)	1240-1 504 (600-1)	1240-1½ 504 (600-1½)	1320-2 584 (600-2)