

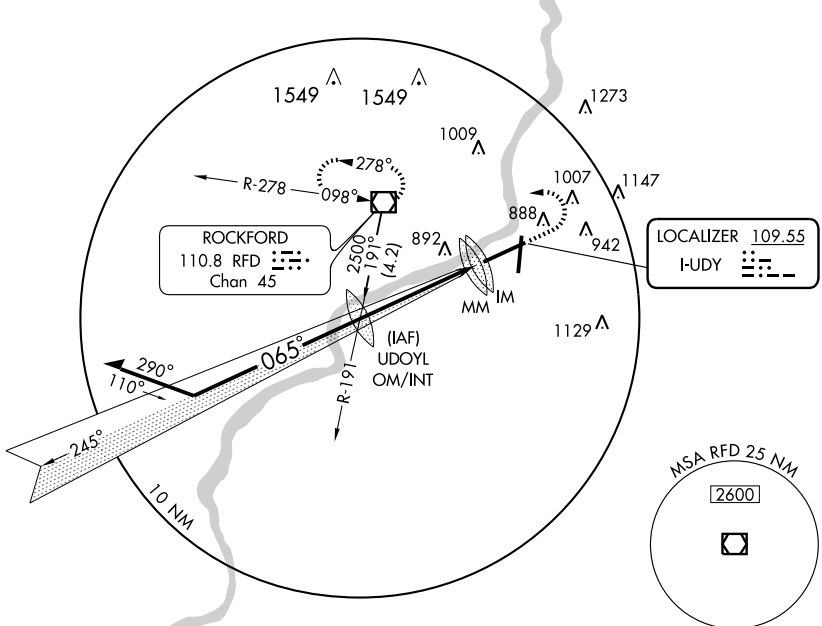
# ILS or LOC RWY 7

CHICAGO/ROCKFORD INTL (RFD)

LOC I-UDY <b>109.55</b>	APP CRS <b>065°</b>	Rwy Idg <b>10004</b> TDZE <b>742</b> Apt Elev <b>742</b>
----------------------------	------------------------	--

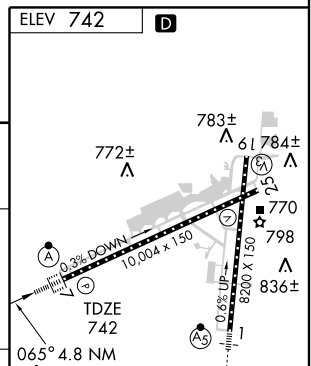
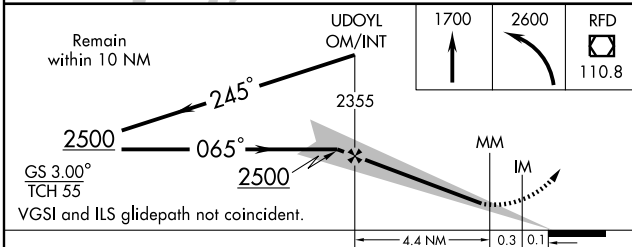
ASR	ALSF-2	MISSED APPROACH: Climb to 1700 then climbing left turn to 2600 direct RFD VOR/DME and hold.
-----	--------	---

ATIS <b>127.6</b>	ROCKFORD APP CON <b>121.0 327.0</b>	ROCKFORD TOWER <b>118.3 239.0</b>	GND CON <b>121.9 239.0</b>	CLNC DEL <b>119.25</b>	UNICOM <b>122.95</b>
----------------------	--	--------------------------------------	-------------------------------	---------------------------	-------------------------



EC-3, 22 OCT 2009 to 19 NOV 2009

EC-3, 22 OCT 2009 to 19 NOV 2009



CATEGORY	A	B	C	D
S-ILS 7	942/18		200 (200-1/2)	
S-LOC 7	1200/24	458 (500-1/2)	1200/40 458 (500-3/4)	1200/50 458 (500-1)
CIRCLING	1220-1 478 (500-1)	1240-1 498 (500-1)	1240-1 1/2 498 (500-1 1/2)	1320-2 578 (600-2)

ELEV 742	D
783±	61 784±
772±	770
798	836±
0.3% DOWN	10,004 x 150
0.6% UP	8200 X 150
065° 4.8 NM from FAF	
REIL Rwy 19 and 25	
HIRL Rwy 1-19 and 7-25	
TDZ/CL Rwy 1, 7, and 19	
FAF to MAP 4.8 NM	
Knots	60 90 120 150 180
Min:Sec	4:48 3:12 2:24 1:55 1:36