

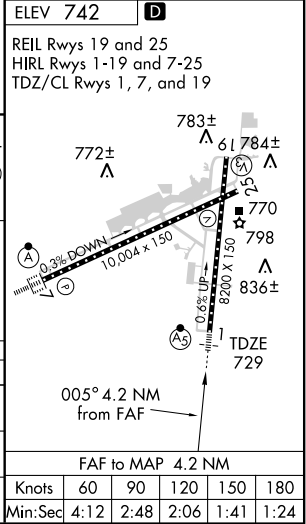
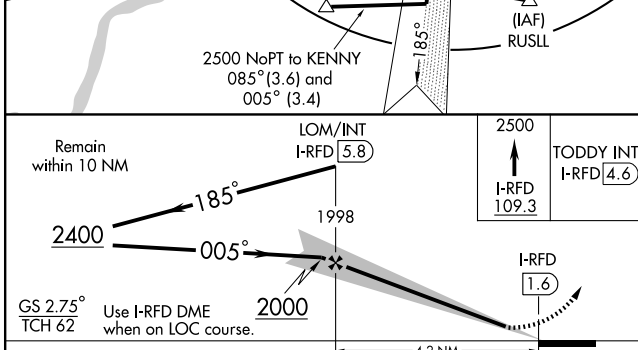
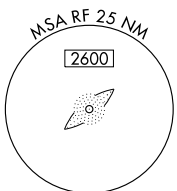
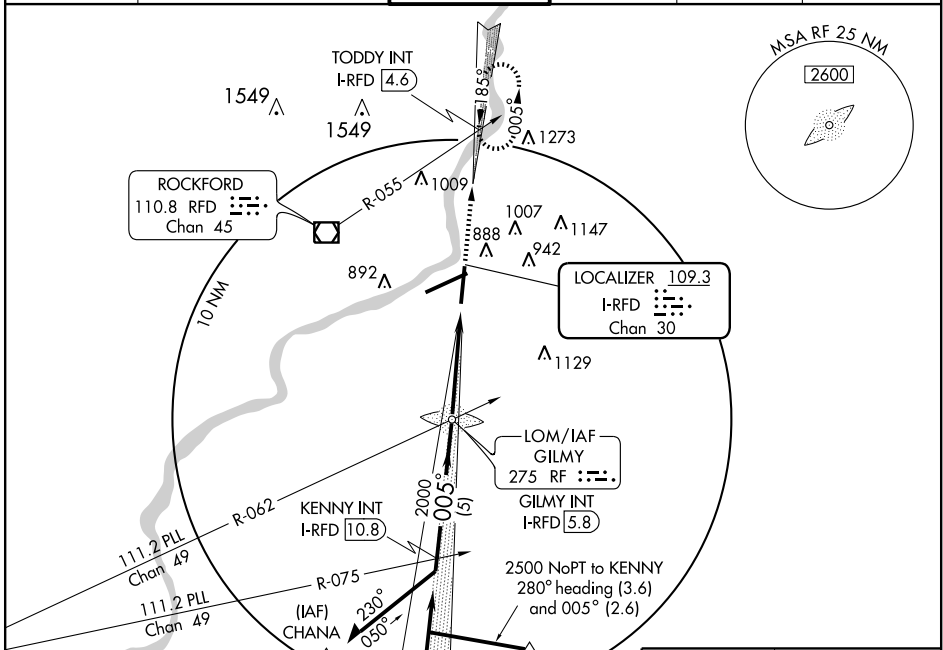
# ILS or LOC RWY 1

CHICAGO/ROCKFORD INTL (RFD)

LOC/DME I-RFD <b>109.3</b> Chan 30	APP CRS <b>005°</b>	Rwy Idg <b>8199</b> TDZE <b>729</b> Apt Elev <b>742</b>
--	------------------------	---

ASR	MALSR AS	MISSED APPROACH: Climb to 2500 via I-RFD North course to TODDY INT/I-RFD 4.6 DME and hold.
-----	-------------	--

ATIS <b>127.6</b>	ROCKFORD APP CON <b>121.0 327.0</b>	<b>ROCKFORD TOWER</b> <b>118.3 239.0</b>	GND CON <b>121.9 239.0</b>	CLNC DEL <b>119.25</b>	UNICOM <b>122.95</b>
----------------------	--	---	-------------------------------	---------------------------	-------------------------



CATEGORY	A	B	C	D
S-ILS 1	929/24		200 (200-½)	
S-LOC 1	1140/24	411 (400-½)	1140/40	411 (400-¾)
CIRCLING	1220-1 484 (500-1)	1240-1 504 (600-1)	1240-1½ 504 (600-1½)	1320-2 584 (600-2)

EC-3, 22 OCT 2009 to 19 NOV 2009

EC-3, 22 OCT 2009 to 19 NOV 2009