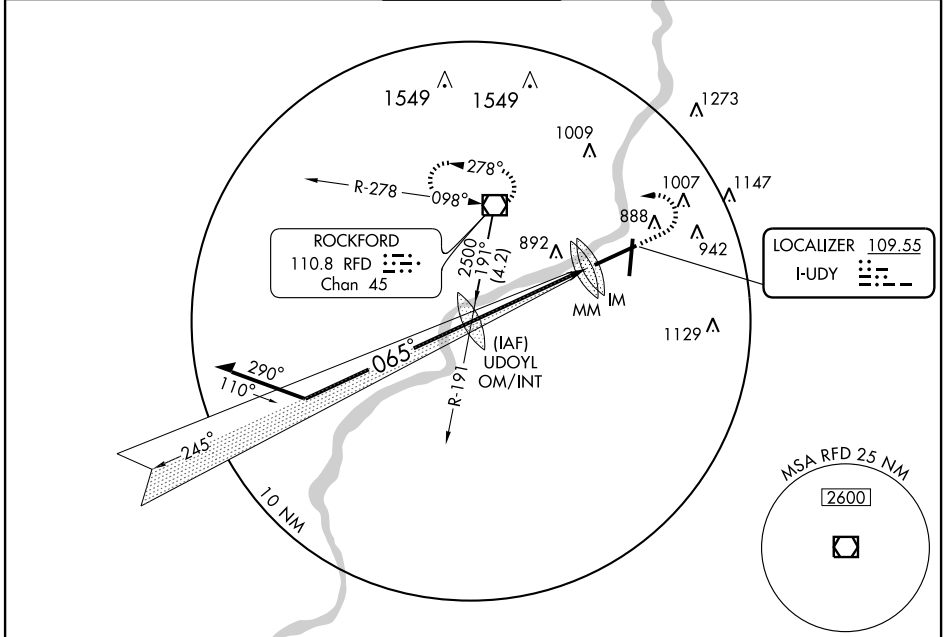


ILS RWY 7 (CAT III)
CHICAGO/ROCKFORD INTL (RFD)

LOC I-UDY 109.55	APP CRS 065°	Rwy Idg 10004 TDZE 742 Apt Elev 742
----------------------------	------------------------	--

ASR	ALSIF-2 	MISSED APPROACH: Climb to 1700 then climbing left turn to 2600 direct RFD VOR/DME and hold.
-----	-------------	---

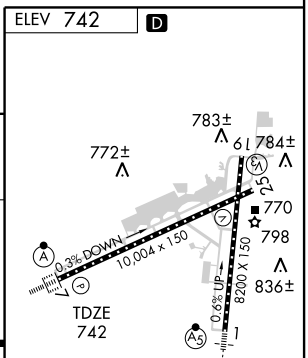
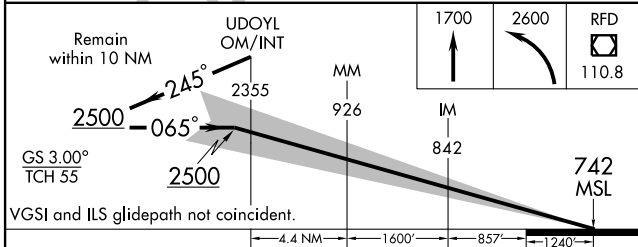
ATIS 127.6	ROCKFORD APP CON 121.0 327.0	ROCKFORD TOWER 118.3 239.0	GND CON 121.9 239.0	CLNC DEL 119.25	UNICOM 122.95
----------------------	--	--------------------------------------	-------------------------------	---------------------------	-------------------------



EC-3, 22 OCT 2009 to 19 NOV 2009

EC-3, 22 OCT 2009 to 19 NOV 2009

ELEV 742	D
----------	----------



CATEGORY	A	B	C	D
S-ILS 7		CAT IIIa RVR 07		
S-ILS 7		CAT IIIb RVR 06		
S-ILS 7		CAT IIIc NA		

CATEGORY III ILS - SPECIAL AIRCREW & AIRCRAFT CERTIFICATION REQUIRED

REIL Rws 19 and 25
HIRL Rws 1-19 and 7-25
TDZ/CL Rws 1, 7, and 19