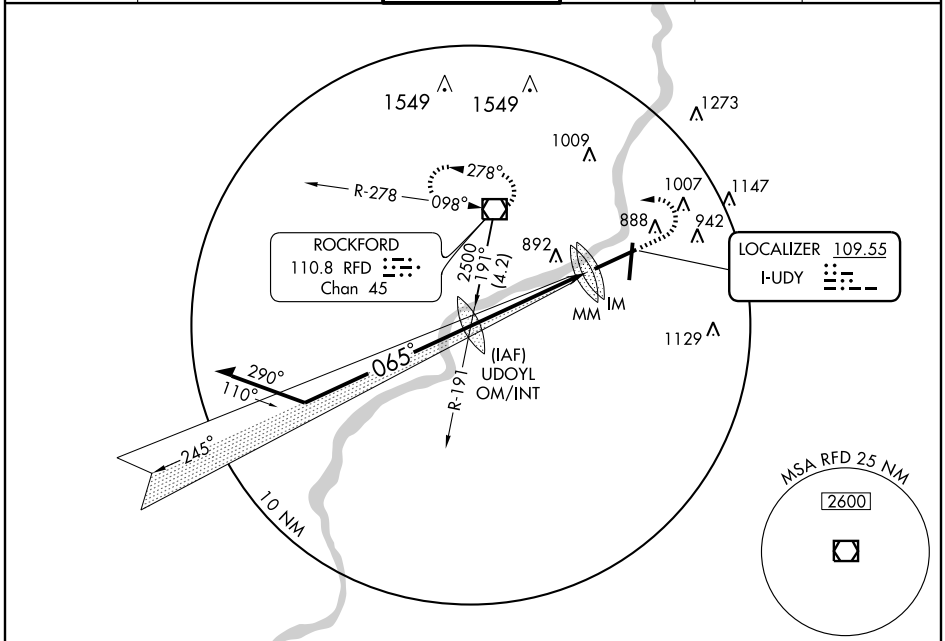


ILS RWY 7 (CAT II)
CHICAGO/ROCKFORD INTL (RFD)

LOC I-UDY 109.55	APP CRS 065°	Rwy Idg 10004 TDZE 742 Apt Elev 742
----------------------------	------------------------	--

ASR	ALSF-2	MISSED APPROACH: Climb to 1700 then climbing left turn to 2600 direct RFD VOR/DME and hold.
-----	--------	---

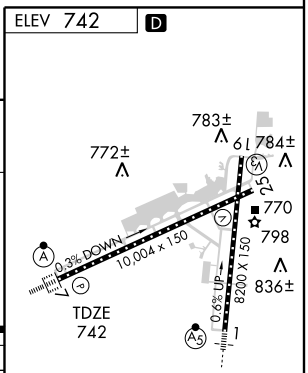
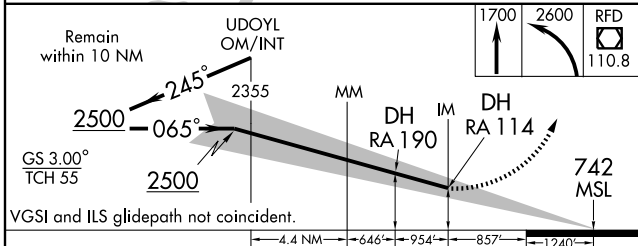
ATIS 127.6	ROCKFORD APP CON 121.0 327.0	ROCKFORD TOWER 118.3 239.0	GND CON 121.9 239.0	CLNC DEL 119.25	UNICOM 122.95
----------------------	--	--------------------------------------	-------------------------------	---------------------------	-------------------------



EC-3, 22 OCT 2009 to 19 NOV 2009

EC-3, 22 OCT 2009 to 19 NOV 2009

ELEV 742	D
----------	---



	4.4 NM	646'	954'	857'	1240'
CATEGORY	A	B	C	D	
S-ILS 7		892/16	150 RA 190		
S-ILS 7		842/12	100 RA 114		

CATEGORY II ILS - SPECIAL AIRCREW & AIRCRAFT CERTIFICATION REQUIRED

REIL Rwy 19 and 25
HIRL Rwy 1-19 and 7-25
TDZ/CL Rwy 1, 7, and 19