

VORTAC SLI 115.7 Chan 104	APCH CRS 214°	Rwy Idg TDZE Arpt Elev 8001 32 32
---	-------------------------	---

AL-953 [USA]

LOS ALAMITOS AAF (KSLI)

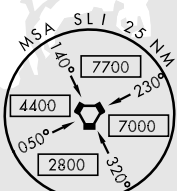
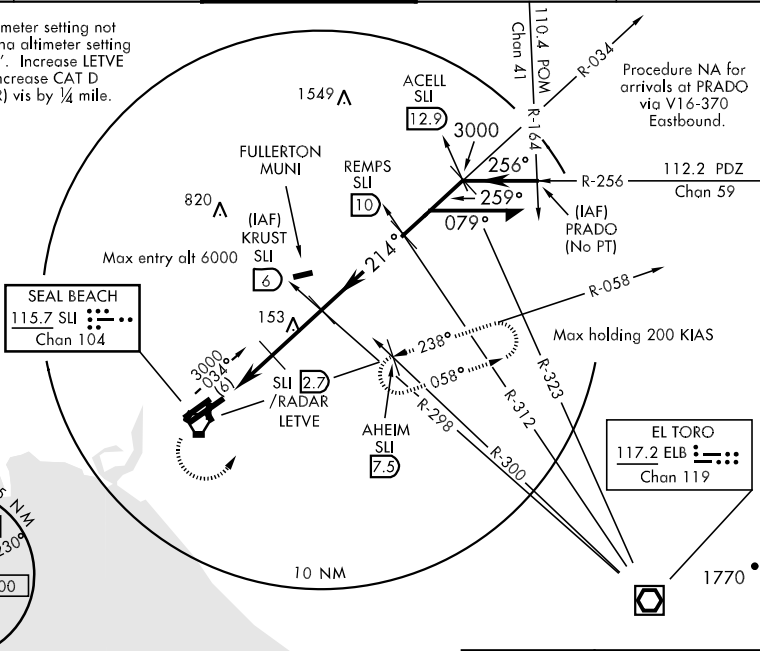
* When ALS inop, increase vis CAT D ¼ mile.
 ** When ALS inop, increase CAT CD vis to 1 mile.
 *** Circling not authorized N of Rwy 4L-22R.



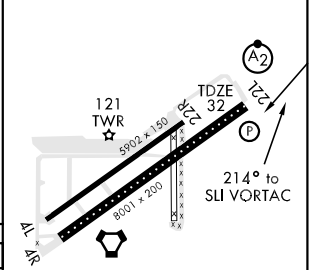
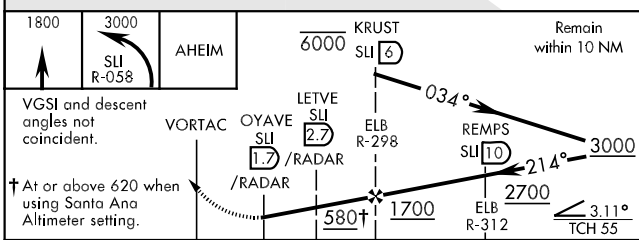
MISSED APPROACH: Climb to 1800, then climbing left turn to 3000 via SLI VORTAC R-058 to AHEIM INT and hold.

ATIS * 118.875 379.975	SOCAL APP CON 124.65 316.125	LOS ALAMITOS TOWER * 123.85 251.15	GND CON 126.95 257.95	PAR
----------------------------------	--	--	---------------------------------	-----

When Los Alamitos altimeter setting not available, use Santa Ana altimeter setting and increase MDAs 40'. Increase LETVE fix minimum by 40'. Increase CAT D (S-22L, DME or RADAR) vis by ¼ mile.



ELEV 32



CATEGORY	A	B	C	D
S-22L	580-¾	548 (600-¾)	580-1¼ 548 (600-1¼)	580-1½ 548 (600-1½)
CIRCLING ***	580-1	548 (600-1)	580-1½ 548 (600-1½)	600-2 568 (600-2)
DME or RADAR				
S-22L *	440-¾	408 (500-¾)	440-1 408 (500-1)	440-1¼ 408 (500-1¼)
CIRCLING ***	440-1 408 (500-1)	500-1 468 (500-1)	500-1½ 468 (500-1½)	600-2 568 (600-2)
S-PAR 22L **	282-¾ 250 (300-¾) GS 3.0°			

HIRL Rwy 4R-22L MIRL Rwy 4L-22R					
FAF to MAP 4.3 NM					
Knots	60	90	120	150	180
Min:Sec	4:18	2:52	2:09	1:43	1:26

SW-3, 22 OCT 2009 to 19 NOV 2009

SW-3, 22 OCT 2009 to 19 NOV 2009