

LOS ALAMITOS, CALIFORNIA

RNAV (GPS) RWY 22L

APCH CRS	Rwy Idg	8001
220°	TDZE	32
	Arpt Elev	32

AL-953 [USA]

LOS ALAMITOS AAF (KSLI)

<p>▼ * When ALS inop, increase CAT D vis ¼ mile. ** Circling not authorized N of Rwy 4L-22R.</p>	<p>SALSF A2</p>	<p>† MISSED APPROACH: Climbing left turn to 3200 direct AHEIM and hold.</p>
<p>▲ NA *** When ALS inop, increase CAT CD vis to 1 mile.</p>		

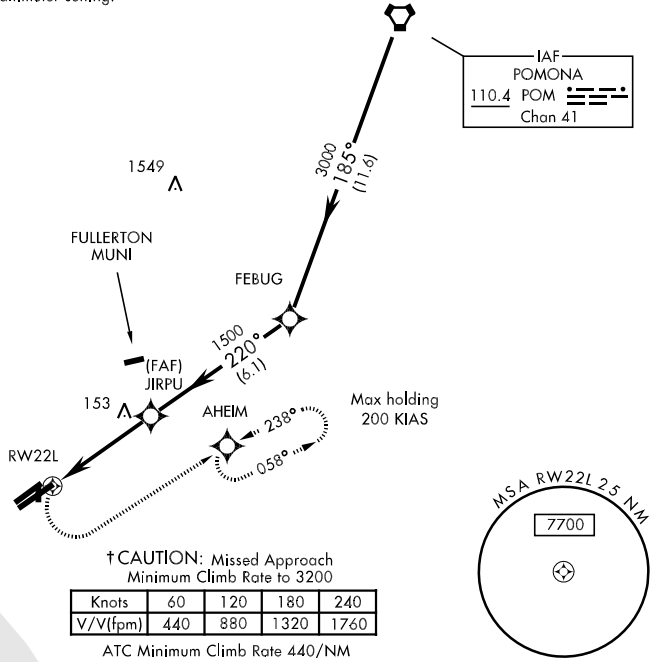
<p>ATIS ★ 118.875 379.975</p>	<p>SOCAL APP CON 124.65 316.125</p>	<p>LOS ALAMITOS TOWER ★ 123.85 251.15</p>	<p>GND CON 126.95 257.95</p>	<p>PAR</p>
-----------------------------------	---	---	----------------------------------	------------

When Los Alamitos altimeter setting not available, use Santa Ana altimeter setting and increase MDAs 40'.

Procedure NA for arrivals at POM VORTAC on airway radials 164° CW 225°.

VDP NA when using Santa Ana altimeter setting.

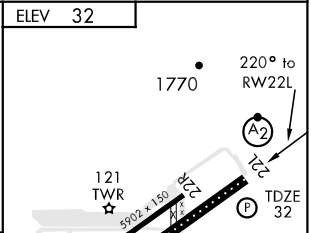
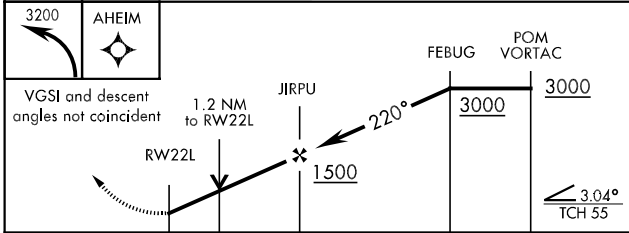
DME/DME RNP 0.3 N/A



† CAUTION: Missed Approach
Minimum Climb Rate to 3200

Knots	60	120	180	240
V/V(fpm)	440	880	1320	1760

ATC Minimum Climb Rate 440/NM



CATEGORY	A	B	C	D
RNAV/MDA*	480-¾ 448 (500-¾)	448 (500-¾)	480-1 448 (500-1)	480-1¼ 448 (500-1¼)
CIRCLING**	480-1 448 (500-1)	500-1 468 (500-1)	500-1½ 468 (500-1½)	600-2 568 (600-2)
S-PAR 22L***	282-¾ 250 (300-¾)		GS 3.0°	

ELEV 32
HIRL Rwy 4R-22L
MIRL Rwy 4L-22R

LOS ALAMITOS, CALIFORNIA
Orig 08101

33°47'N-118°03'W

LOS ALAMITOS AAF (KSLI)

RNAV (GPS) RWY 22L

SW-3, 22 OCT 2009 to 19 NOV 2009

SW-3, 22 OCT 2009 to 19 NOV 2009