

LOM LG <b>233</b>	APCH CRS <b>206°</b>	Rwy ldg TDZE Arprt Elev <b>8001</b> <b>32</b>
----------------------	-------------------------	---

AL-953 [USA]

LOS ALAMITOS AAF (KSLI)

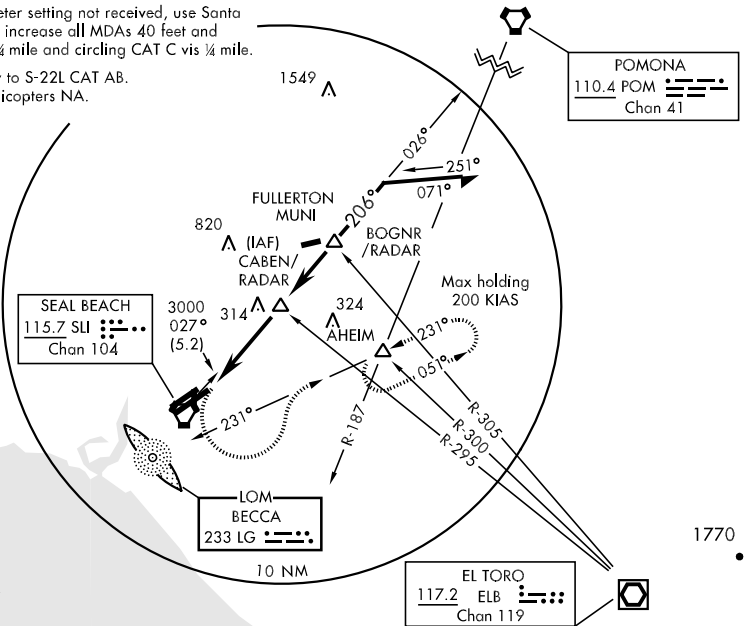
▼ \* When ALS inop, increase CAT D vis ¼ mile.  
\*\* Circling not authorized N of Rwy 4L-22R.  
▲ NA \*\*\* When ALS inop, increase CAT CD vis to 1 mile.

A2 MISSED APPROACH: Climb to 1800 then climbing left turn to 3000 via BECCA LOM 051° bearing to AHEIM INT and hold.

ATIS ★ <b>118.875 379.975</b>	SOCAL APP CON <b>124.65 316.125</b>	LOS ALAMITOS TOWER ★ <b>123.85 251.15</b>	GND CON <b>126.95 257.95</b>	PAR
----------------------------------	--	--	---------------------------------	-----

When Los Alamitos altimeter setting not received, use Santa Ana altimeter setting and increase all MDAs 40 feet and S-22L CAT C and D vis ¼ mile and circling CAT C vis ¼ mile.

Inop table does not apply to S-22L CAT AB.  
Visibility reduction by helicopters NA.



SW-3, 22 OCT 2009 to 19 NOV 2009

SW-3, 22 OCT 2009 to 19 NOV 2009

1800	3000	LG 233 051° BRG	AHEIM INT	CABEN INT/RADAR	Remain within 10 NM
------	------	--------------------	-----------	-----------------	---------------------

VGSJ and Descent angles not coincident.

026° BOGNR INT/RADAR  
 206°  
 1500 2400 3000  
 3.27° TCH 60  
 4 NM

ELEV 32

206° to BECCA LOM

121 TWR  
 5002 x 150  
 8001 x 200  
 TDZE 32  
 22L  
 22R  
 4L 4R

FAF to MAP 4.0 NM					
Knots	60	90	120	150	180
Min:Sec	4:00	2:40	2:00	1:36	1:20

CATEGORY	A	B	C	D
S-22L *	620-1	588 (600-1)	620-1½ 588 (600-1½)	620-1½ 588 (600-1½)
CIRCLING **	620-1	588 (600-1)	620-1½ 588 (600-1½)	620-2 588 (600-2)
S-PAR 22L ***	282-¾ 250		(300-¾) GS 3.0°	