

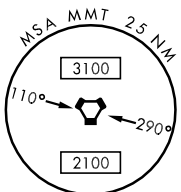
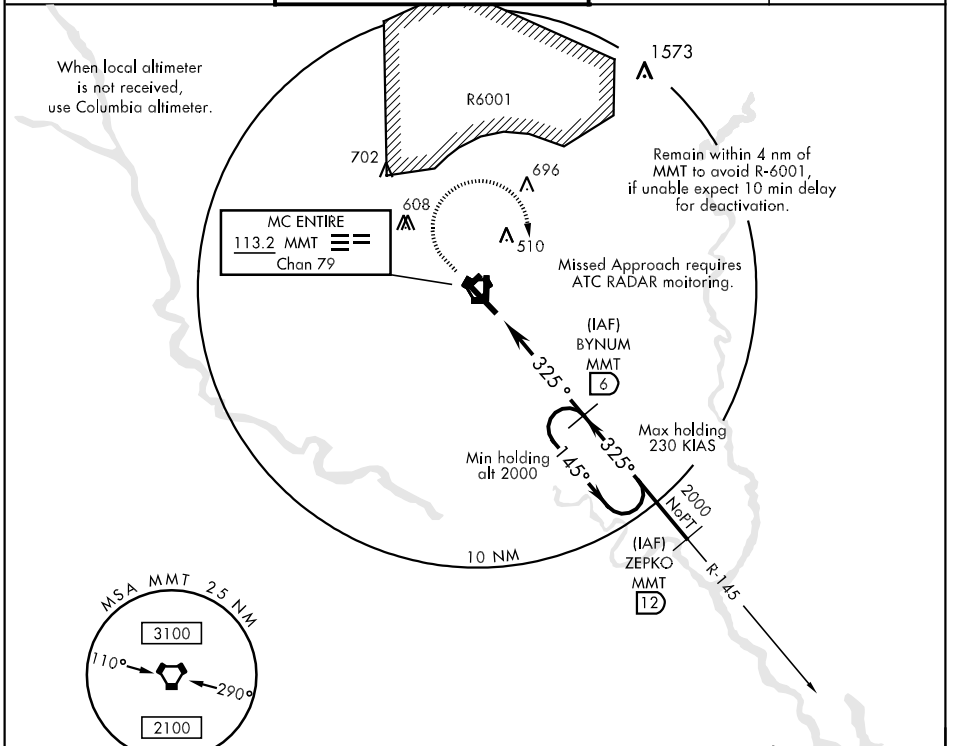
VORTAC MMT Chan 79	APCH CRS 325°	Rwy ldg TDZE 9009 243 Arpt Elev 252	AL-951 [USAF]	MC ENTIRE JNGB (KMMT)
------------------------------	-------------------------	----------------------------------------------------------------------	---------------	-----------------------

▼ * When ALS inop, increase CAT ABC RVR to 50 and vis to 1 mile, CAT D RVR to 60 and vis to 1¼ mile, CAT E vis to 1½ mile.

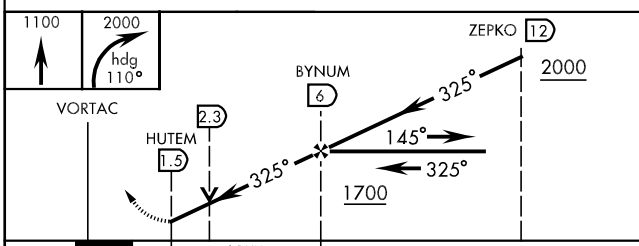
ALSF-1 (A1)

MISSED APPROACH: Climb to 1100 then immediate climbing right turn to 2000 via heading 110° then as directed by ATC.

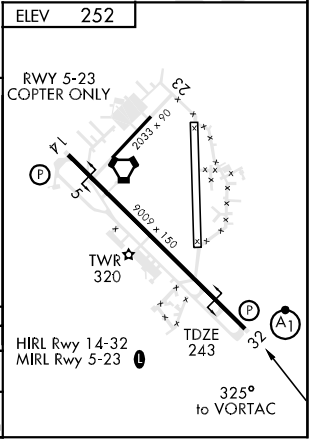
SHAW APP CON 125.4 385.6	MC ENTIRE TOWER ★ 132.4 (CTAF) 253.5	GND CON 127.625 226.675	ASR/PAR (RADAR VECTORING)
------------------------------------	------------------------------------------------	-----------------------------------	---------------------------



EMERG SAFE ALT 100 NM 3900



CATEGORY	A	B	C	D	E
S-32 *	640/24 397 (400-½)	640/40 397 (400-¾)	640/50 397 (400-1)		
CIRCLING	840-1 588 (600-1)	860-1 608 (700-1)	880-1¾ 628 (700-1¾)	880-2 628 (700-2)	1020-2¾ 728 (800-2¾)



SE-2, 22 OCT 2009 to 19 NOV 2009

SE-2, 22 OCT 2009 to 19 NOV 2009