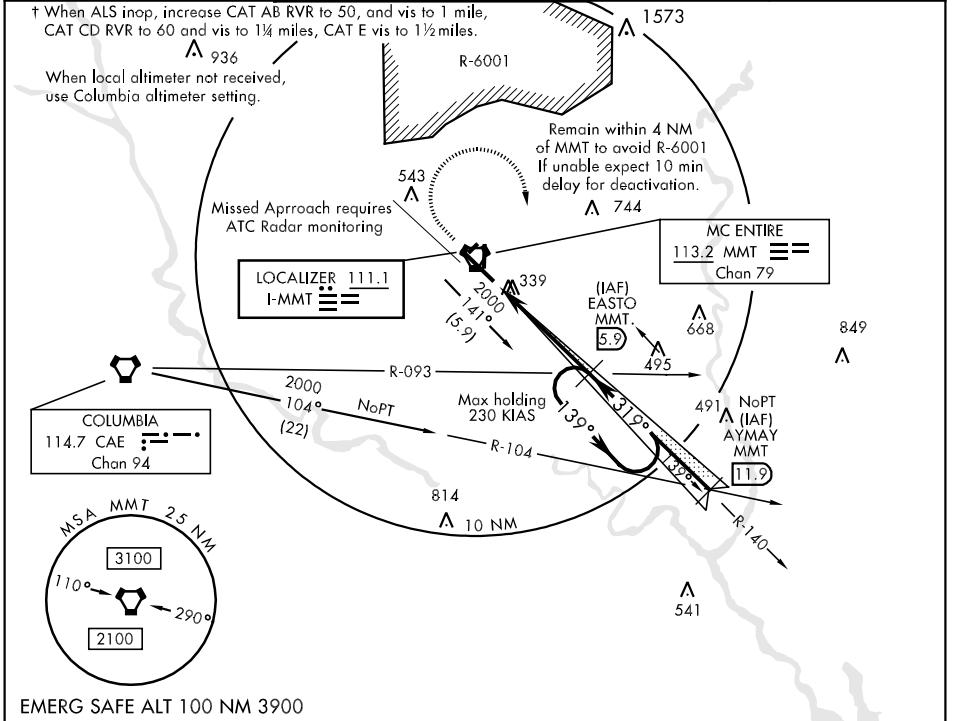


LOC I-MMT 111.1	APCH CRS 319°	Rwy Idg TDZE Arpt Elev 9009 243 252	AL-951 [USAF]	MC ENTIRE JNGB (KMMT)
---------------------------	-------------------------	---	---------------	-----------------------

▼ * When ALS inop, increase CAT A-E RVR to 40, and vis to ¾ mile.
 ** When ALS inop, increase CAT ABC RVR to 50, and vis to 1 mile, CAT DE RVR to 60 and vis to 1 ¼ miles.
 *** When ALS inop, increase CAT A-E RVR to 50, and vis to 1 mile.

ALSF-1 (A1) MISSED APPROACH: Climb to 1100, then immediate climbing right to 2000 via hdg 110°, then as directed by ATC.

SHAW APP CON 125.4 385.6	MC ENTIRE TOWER ★ 132.4 (CTAF) 0 253.5	GND CON 127.625 226.675	ASR/PAR (RADAR VECTORING)
------------------------------------	--	-----------------------------------	---------------------------



EMERG SAFE ALT 100 NM 3900	1100	2000	EASTO CAE R-093 5.9	11.9 AYMAY R-140	ELEV 252
	↑	hdg 110°	VORTAC	EGULE 1.4	369
	4	4.5 NM	1600	2000	320
			319°	139°	319° 4.9 NM from FAF
			GS 2.50°	TCH 48	32
CATEGORY	A	B	C	D	E
S-ILS 32 *	443/24		200	(200-½)	
S-LOC 32 **	620/24	377 (400-½)	620/40	377	(400-¾)
CIRCLING	840-1 588 (600-1)	860-1 608 (700-1)	880-1¾ 628 (700-1¾)	880-2 628 (700-2)	1020-2¾ 768 (800-2¾)
COLUMBIA ALTIMETER SETTING MINIMUMS					
S-ILS 32 ***	482/24		239	(300-½)	
S-LOC 32 †	660/24	417 (500-½)	660/40	417	(500-¾)
CIRCLING	880-1 628 (700-1)	900-1 648 (700-1)	920-1¾ 668 (700-1¾)	920-2 668 (700-2)	1060-2¾ 808 (900-2¾)

SE-2, 22 OCT 2009 to 19 NOV 2009

SE-2, 22 OCT 2009 to 19 NOV 2009