

VORTAC MMT 113.2 Chan 79	APCH CRS 325°	Rwy Idg TDZE 9009 243 Arpt Elev 252
---------------------------------------	-------------------------	---

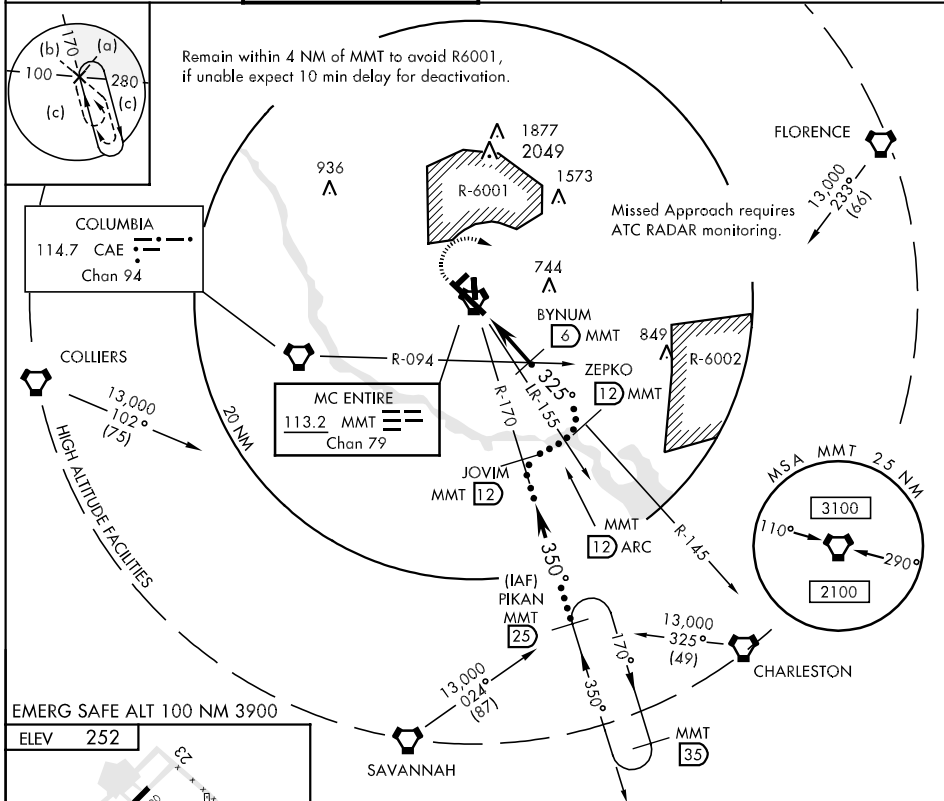
JAL-951 [USAF]

▼ * When ALS Inop, increase CAT C RVR 50, vis to 1 mile; CAT D RVR to 60, vis to 1½ miles, CAT E vis to 1½ miles.

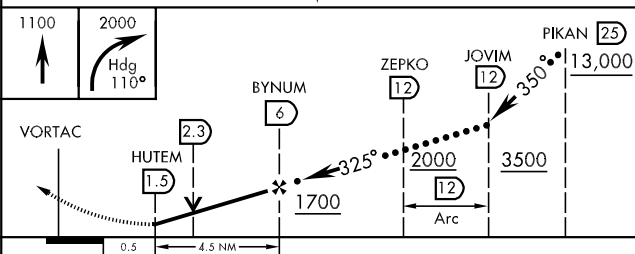
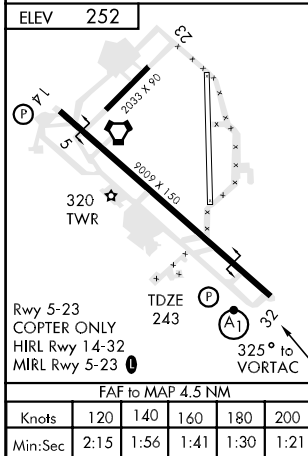


MISSED APPROACH: Climb to 1100 then immediate climbing right turn to 2000 via heading 110° then as directed by ATC.

SHAW APP CON 125.4 385.6	MC ENTIRE TOWER 132.4 (CTAF) 0 253.5	GND CON 127.625 226.675	ASR/PAR (RADAR VECTORING)
------------------------------------	--	-----------------------------------	------------------------------



EMERG SAFE ALT 100 NM 3900



CATEGORY	C	D	E
S-32 *	640/40	397 (400-¾)	640/50 397 (400-1)
CIRCLING	880-1¾ 628 (700-1¾)	880-2 628 (700-2)	1020-2¾ 768 (800-2¾)

SE-2, 22 OCT 2009 to 19 NOV 2009

SE-2, 22 OCT 2009 to 19 NOV 2009