

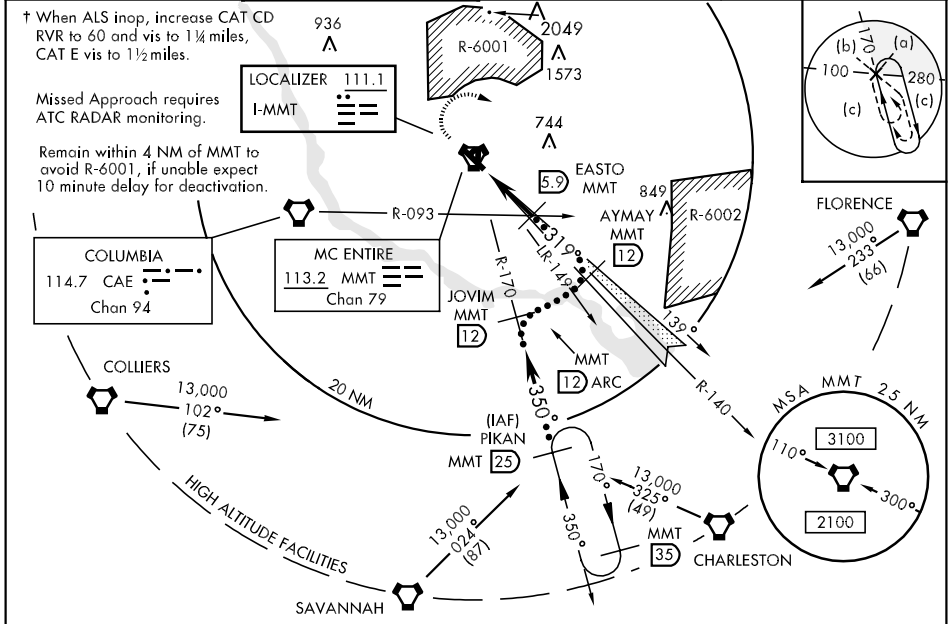
LOC I-MMT <b>111.1</b>	APCH CRS <b>319°</b>	Rwy Idg TDZE Arpt Elev <b>9009</b> <b>243</b> <b>252</b>	JAL-951 [USAF]	MC ENTIRE JNGB (KMMT)
---------------------------	-------------------------	---	----------------	-----------------------

\* When ALS inop, increase CAT CDE RVR to 40, vis to ¼ mile.  
 \*\* When ALS inop, increase CAT C RVR to 50, vis to 1 mile, CAT DE RVR to 60, vis to 1½ miles.  
 \*\*\* When ALS inop, increase CAT CDE RVR to 50, and vis to 1 mile.

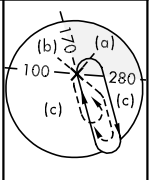


MISSED APPROACH: Climb to 1100 then immediate climbing right turn to 2000 via heading 110° then as directed by ATC.

SHAW APP CON <b>125.4 385.6</b>	MC ENTIRE TOWER <b>132.4 (CTAF) 253.5</b>	GND CON <b>127.625 226.675</b>	ASR/PAR (RADAR VECTORED)
------------------------------------	--	-----------------------------------	-----------------------------

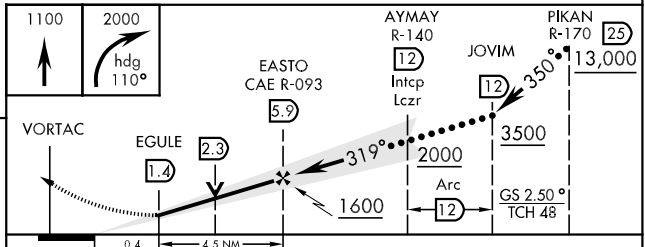


† When ALS inop, increase CAT CD RVR to 60 and vis to 1½ miles, CAT E vis to 1½ miles.  
 Missed Approach requires ATC RADAR monitoring.  
 Remain within 4 NM of MMT to avoid R-6001, if unable expect 10 minute delay for deactivation.



EMERG SAFE ALT 100 NM 3900

ELEV	252
Rwy 5-23 COPTER ONLY HIRL Rwy 14-32 MIRL Rwy 5-23	
TDZE 243 A1	
FAF to MAP 4.5 NM	
Knots	120 140 160 180 200
Min:Sec	2:15 1:56 1:41 1:30 1:21



CATEGORY	C	D	E
S-ILS 32 *	443/24	200 (200-½)	
S-LOC 32 **	620/40	377 (400-¾)	
CIRCLING	880-1¾ 628 (700-1¾)	880-2 628 (700-2)	1020-2¾ 768 (800-2¾)
S-PAR 32 *	443/24	200 (200-½)	GS 2.50° TCH 48
COLUMBIA ALTIMETER SETTING MINIMUMS			
S-ILS 32 ***	482/24	239 (300-½)	
S-LOC 32 †	660/40	417 (500-¾)	660/50 417 (500-1)
CIRCLING	920-1¾ 668 (700-1¾)	920-2 668 (700-2)	1060-2¾ 808 (900-2¾)

SE-2, 22 OCT 2009 to 19 NOV 2009

SE-2, 22 OCT 2009 to 19 NOV 2009