



RNAV (GPS) RWY 15

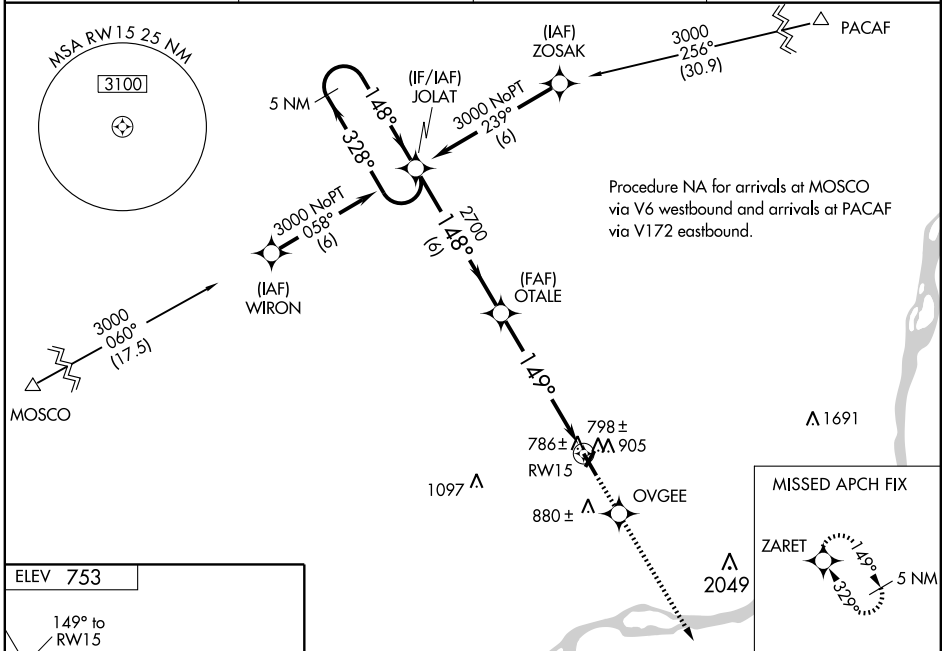
DAVENPORT MUNI (DVN)

WAAS CH 81821 W15A	APP CRS 149°	Rwy Idg TDZE Apt Elev	5501 751 753
---------------------------------	------------------------	-----------------------------	---

⚠ DME/DME RNP-0.3 NA.
 For uncompensated Baro-VNAV systems, LNAV/VNAV NA below -16°C (4°F) or above 47°C (117°F).
 If local altimeter setting not received, use Quad City Intl altimeter setting and increase all DAs/MDAs 60 feet.
 VDP and Baro-VNAV NA when using Quad City Intl altimeter setting.
 For inoperative MALSR, increase LPV visibility all Cats. to ¾.

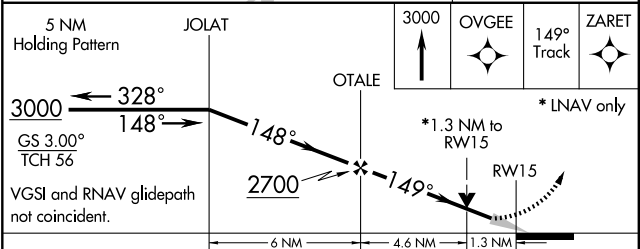
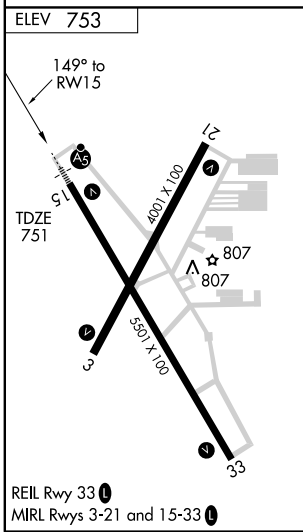
MALSR

MISSED APPROACH: Climb to 3000 direct OVGEE and via 149° track to ZARET and hold.

AWOS-3 120.175	QUAD CITY APP CON * 125.95 257.8	CLNC DEL 118.35	UNICOM 123.0 (CTAF) 
--------------------------	--	---------------------------	---



NC-3, 22 OCT 2009 to 19 NOV 2009

NC-3, 22 OCT 2009 to 19 NOV 2009



CATEGORY	A	B	C	D
LPV DA		1001-½	250 (300-½)	
LNAV/VNAV DA		1111-¾	360 (400-¾)	
LNAV MDA	1200-½	449 (500-½)	1200-¾ 449 (500-¾)	1200-1 449 (500-1)
CIRCLING	1220-1¼	467 (500-1¼)	1220-1½ 467 (500-1½)	1320-2 567 (600-2)