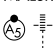


# RNAV (GPS) RWY 6

ISLIP/ LONG ISLAND MAC ARTHUR (ISP)

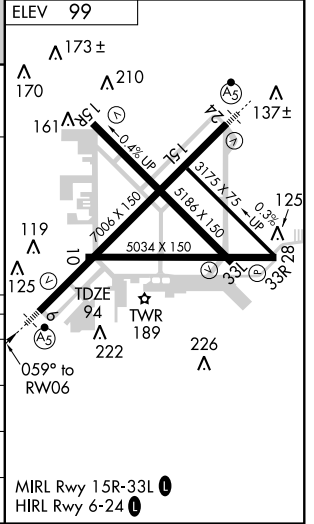
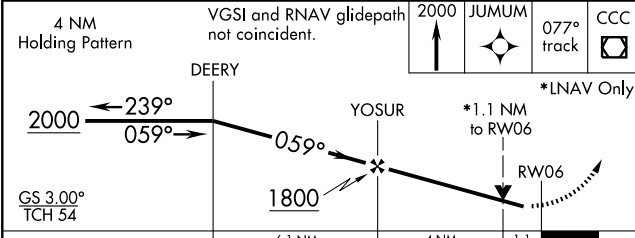
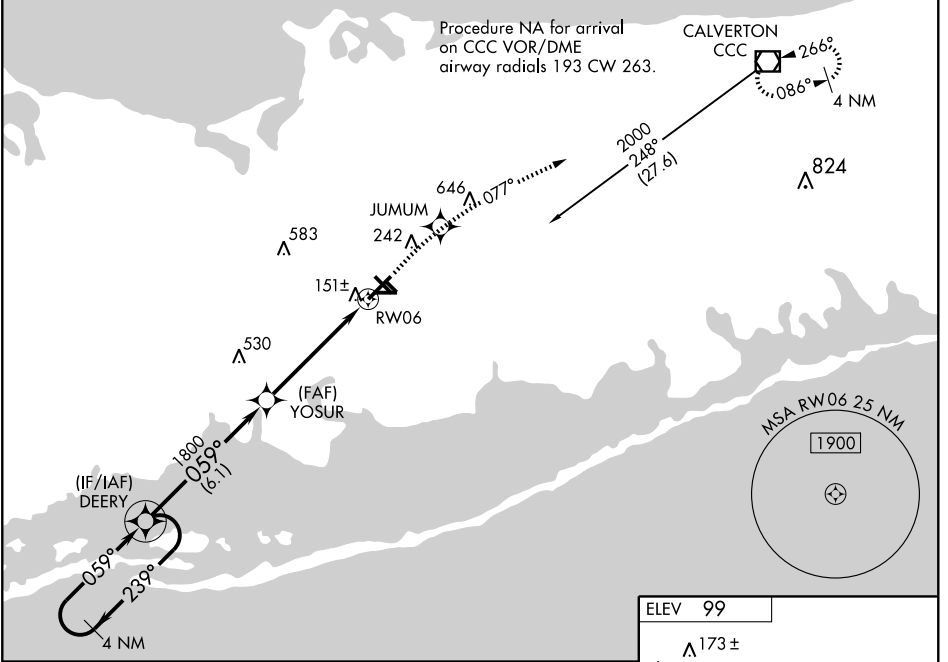
WAAS CH <b>66010</b> <b>W06A</b>	APP CRS <b>059°</b>	Rwy Idg <b>7006</b> TDZE <b>94</b> Apt Elev <b>99</b>
--	------------------------	---

**⚠** For uncompensated Baro-VNAV systems, LNAV/VNAV NA below -15°C (5°F) or above 48°C (118°F). DME/DME RNP-0.3 NA. When local altimeter setting not received, use Shirley altimeter setting and increase all DA 28 feet and all MDA 40 feet. For inoperative MALSR, increase LNAV Cat D visibility to RVR 6000. Baro-VNAV NA when using Shirley altimeter setting. VDP NA when using Shirley altimeter setting.

**MALSR** 

**MISSED APPROACH:** Climb to 2000 direct JUMUM and via 077° track to CCC VOR/DME and hold.

ATIS <b>120.725</b>	NEW YORK APP CON <b>118.0 343.75</b>	LONG ISLAND TOWER ★ <b>119.3 (CTAF) 0 335.5</b>	GND CON <b>135.3</b>	CLNC DEL <b>121.85</b>
------------------------	---	--	-------------------------	---------------------------



CATEGORY	A	B	C	D
LPV DA		294/24	200 (200-½)	
LNAV/VNAV DA		451/40	357 (400-¾)	
LNAV MDA	500/24	406 (500-½)	500/40 406 (500-¾)	500/50 406 (500-1)
CIRCLING	580-1	481 (500-1)	580-1½ 481 (500-1½)	660-2 561 (600-2)

MIRL Rwy 15R-33L **0**  
HIRL Rwy 6-24 **0**

NE-2, 22 OCT 2009 to 19 NOV 2009

NE-2, 22 OCT 2009 to 19 NOV 2009