

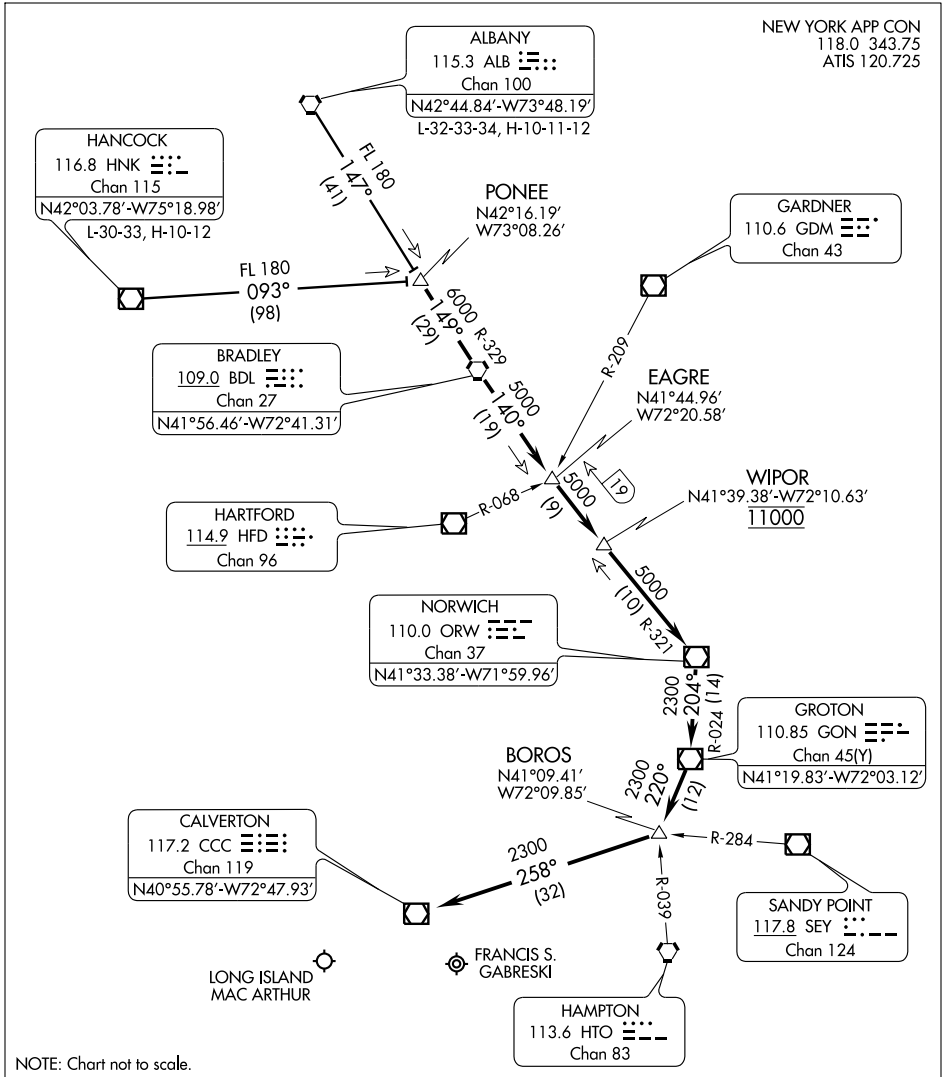
# PONEE TWO ARRIVAL

ISLIP, NEW YORK

NEW YORK APP CON  
118.0 343.75  
ATIS 120.725

NE-2, 22 OCT 2009 to 19 NOV 2009

NE-2, 22 OCT 2009 to 19 NOV 2009



**ALBANY TRANSITION (ALB.PONEE2):** From over ALB VORTAC via ALB R-147 to PONEE INT. Thence. . . .

**HANCOCK TRANSITION (HNK.PONEE2):** From over HNK VOR/DME via HNK R-093 to PONEE INT. Thence. . . .

. . . . From over PONEE INT via BDL R-329 to BDL VORTAC; then via BDL R-140 to ORW VOR/DME, then via ORW R-204 to GON VOR/DME, then via GON R-220 to BOROS INT, then direct to CCC VOR/DME.

Expect radar vectors to final approach course.

# PONEE TWO ARRIVAL

ISLIP, NEW YORK