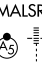


# ILS or LOC RWY 6

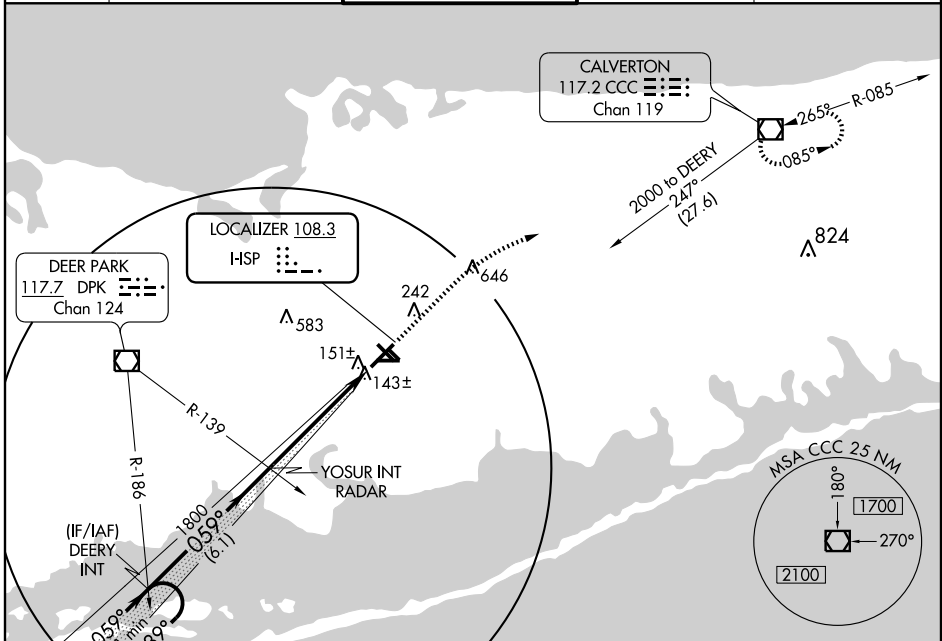
ISLIP/LONG ISLAND MAC ARTHUR (ISP)

LOC I-HSP <b>108.3</b>	APP CRS <b>059°</b>	Rwy Idg <b>7006</b>
		TDZE <b>94</b>
		Apt Elev <b>99</b>

**⚠** When local altimeter setting not received, use Shirley altimeter setting and increase S-ILS 6 DA to 322 and all MDA 40 feet.  
**⚠** For inoperative MALSR, increase S-LOC 6 Cat D visibility to RVR 5000.  
 \*\* RVR 1800 authorized with the use of FD or AP or HUD to DA.

**MALSR**  MISSED APPROACH: Climb to 600 then climbing right turn to 2000 direct CCC VOR/DME and hold.

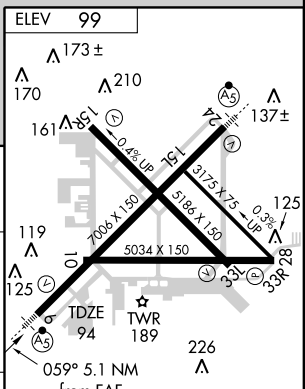
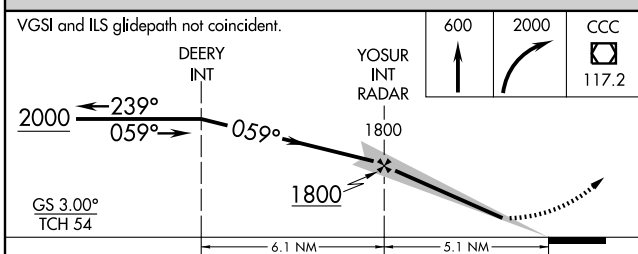
ATIS <b>120.725</b>	NEW YORK APP CON <b>118.0 343.75</b>	LONG ISLAND TOWER ★ <b>119.3 (CTAF) 0 335.5</b>	GND CON <b>135.3</b>	CLNC DEL <b>121.85</b>
------------------------	---	--	-------------------------	---------------------------



NE-2, 22 OCT 2009 to 19 NOV 2009

NE-2, 22 OCT 2009 to 19 NOV 2009

VGSI and ILS glidepath not coincident.



CATEGORY	A	B	C	D
S-ILS 6	**294/24 200(200-½)			
S-LOC 6	400-24 306 (400-½)		400/40 306 (400-¾)	
CIRCLING	580-1 481 (500-1)		580-1½ 660-2 481 (500-1½) 561 (600-2)	

MIRL Rwy 15R-33L	<b>⓪</b>
HIRL Rwy 6-24	<b>⓪</b>
FAF to MAP 5.1 NM	
Knots	60 90 120 150 180
Min:Sec	5:06 3:24 2:33 2:02 1:42