

WATERLOO, IOWA

AL-945 (FAA)

VORTAC ALO 112.2 Chan 59	APP CRS 294°	Rwy Idg TDZE Apt Elev	8400 867 873
---------------------------------------	------------------------	-----------------------------	---

VOR/DME RWY 30

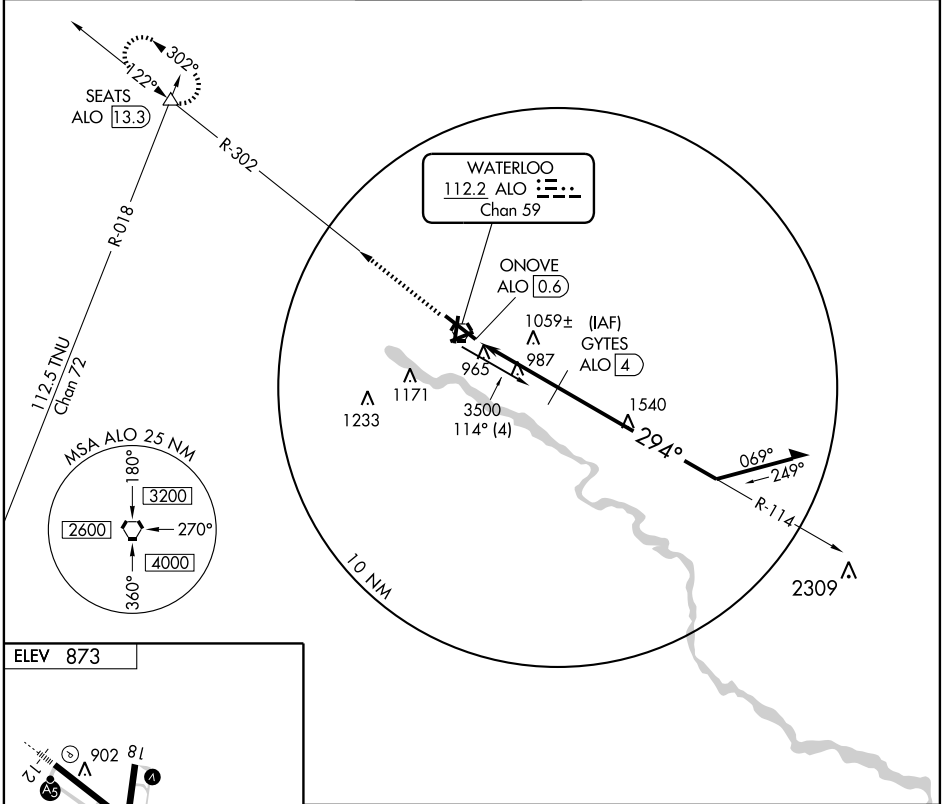
WATERLOO RGNL (A.L.O)

▼ Inoperative table does not apply to Cat C.
▲ If local altimeter setting not received, use Independence altimeter setting and increase all MDAs 80 feet.

MALSR
-
=

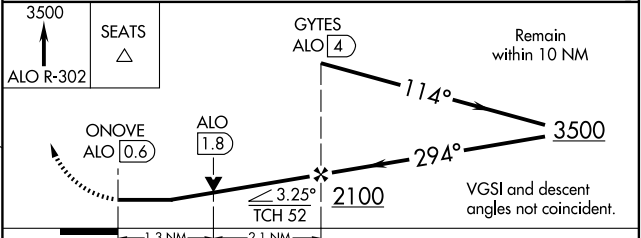
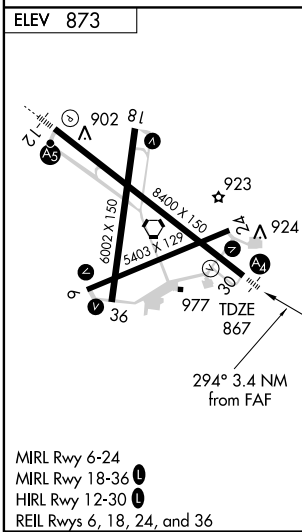
MISSED APPROACH: Climb to 3500 via ALO R-302 to SEATS Int/13.3 DME and hold.

ATIS 120.65	WATERLOO APP CON * 118.9 251.15	WATERLOO TOWER * 125.075 (CTAF) 257.8	GND CON 121.9 269.1	UNICOM 122.95
-----------------------	---	---	-------------------------------	-------------------------



NC-3, 22 OCT 2009 to 19 NOV 2009

NC-3, 22 OCT 2009 to 19 NOV 2009



CATEGORY	A	B	C	D
S-30	1320-3/4 453 (500-3/4)		1320-1/4 453 (500-1/4)	1320-1/2 453 (500-1/2)
CIRCLING	1380-1 507 (600-1)		1380-1/2 507 (600-1/2)	1480-2 607 (700-2)

WATERLOO, IOWA
Amdt 15 09071

42°33'N-92°24'W

WATERLOO RGNL (A.L.O) VOR/DME RWY 30