

WATERLOO, IOWA

AL-945 (FAA)

VOR RWY 18

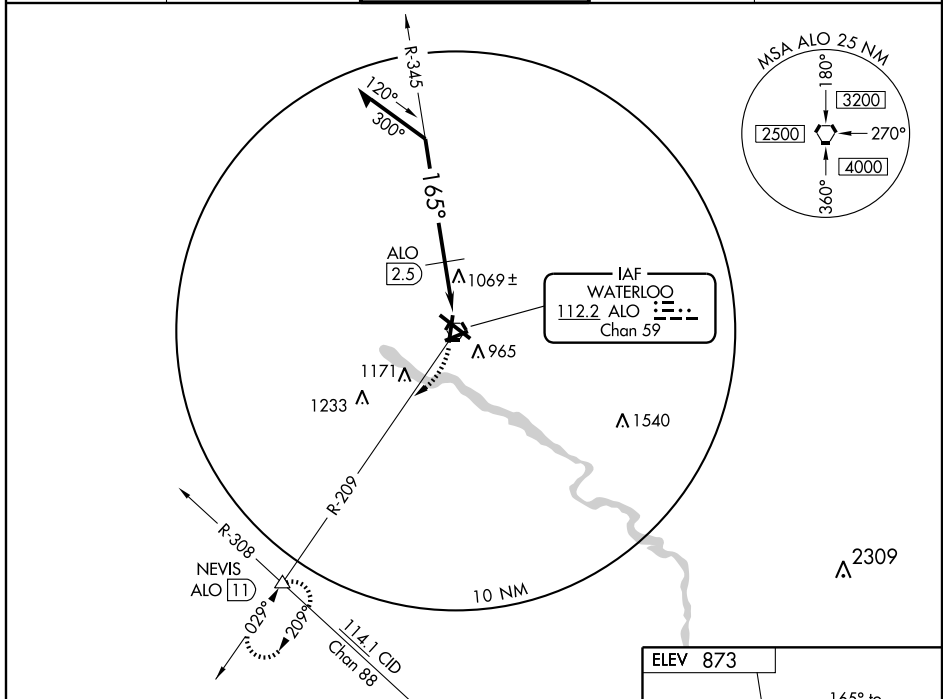
WATERLOO RGNL (A.L.O)

VORTAC ALO 112.2 Chan 59	APP CRS 165°	Rwy Idg TDZE Apt Elev	6002 870 873
---------------------------------------	------------------------	-----------------------------	---

NA

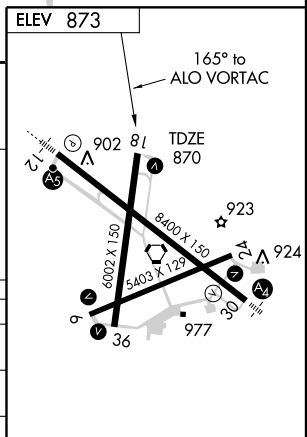
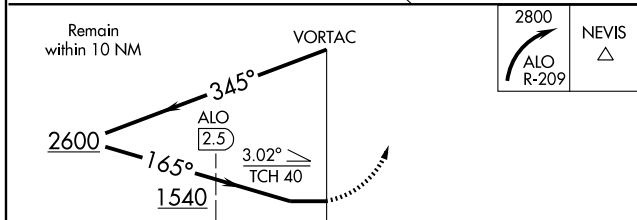
MISSED APPROACH: Climbing right turn to 2800 via ALO R-209 to NEVIS Int and hold.

ATIS 120.65	WATERLOO APP CON * 118.9 251.15	WATERLOO TOWER * 125.075 (CTAF) 257.8	GND CON 121.9 269.1	UNICOM 122.95
-----------------------	---	---	-------------------------------	-------------------------



NC-3, 22 OCT 2009 to 19 NOV 2009

NC-3, 22 OCT 2009 to 19 NOV 2009



CATEGORY	A	B	C	D
S-18	1540-1	670 (700-1)	1540-1¼ 670 (700-1¾)	1540-2 670 (700-2)
CIRCLING	1540-1	667 (700-1)	1540-1¾ 667 (700-1¾)	1540-2 667 (700-2)
DME MINIMUMS				
S-18	1320-1	450 (500-1)	1320-1¼ 450 (500-1¼)	1320-1½ 450 (500-1½)
CIRCLING	1380-1	507 (600-1)	1380-1½ 507 (600-1½)	1480-2 607 (700-2)

MIRL Rwy 6-24
MIRL Rwy 18-36
HIRL Rwy 12-30
REIL Rws 6, 18, 24, and 36

WATERLOO, IOWA
Amdt 8A 09071

42°33'N-92°24'W

WATERLOO RGNL (A.L.O)
VOR RWY 18