

WATERLOO, IOWA

AL-945 (FAA)

RNAV (GPS) RWY 30

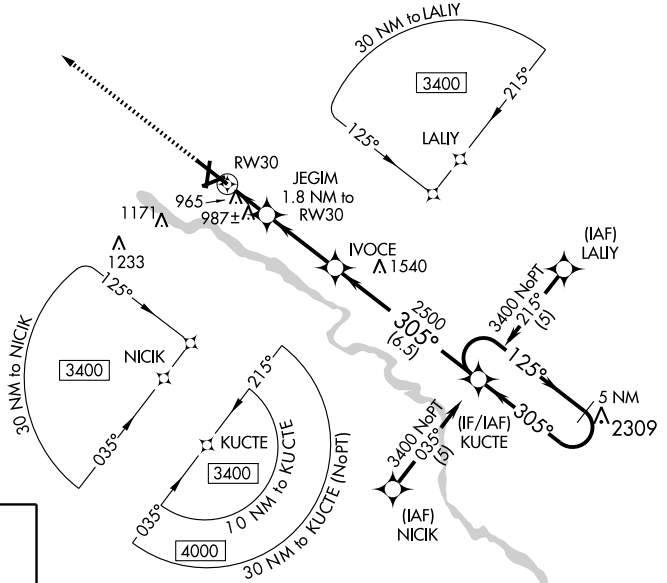
WATERLOO RGNL (A.L.O)

WAAS CH 78201 W30A	APP CRS 305°	Rwy Idg TDZE Apt Elev	8400 867 873
--	------------------------	-----------------------------	---

▼ Inoperative table does not apply to LPV, LNAV/VNAV and LNAV Cat C.
▲ For uncompensated Baro-VNAV systems, LNAV/VNAV NA below -16°C (4°F) or above 47°C (116°F). If local altimeter setting not received, use Independence altimeter setting and increase all DAs/MDAs 80 feet. DME/DME-0.3 RNP NA. Baro-VNAV and VDP NA when using Independence altimeter setting.

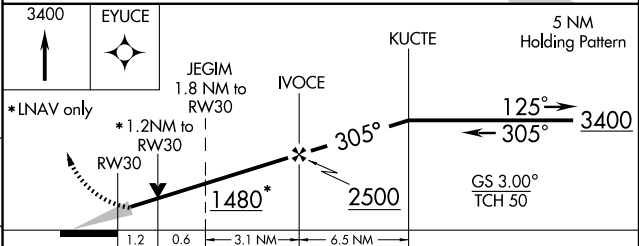
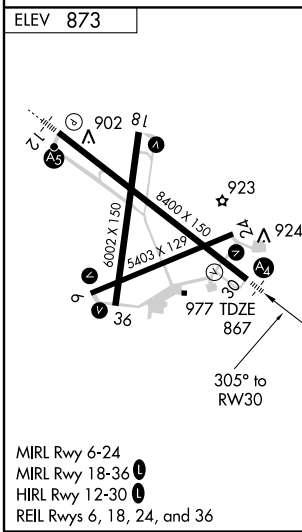
MALSR 	MISSED APPROACH: Climb to 3400 direct EYUCE and hold.
-----------	---

ATIS 120.65	WATERLOO APP CON * 118.9 251.15	WATERLOO TOWER * 125.075 (CTAF) 257.8	GND CON 121.9 269.1	UNICOM 122.95
-----------------------	---	---	-------------------------------	-------------------------



NC-3, 22 OCT 2009 to 19 NOV 2009

NC-3, 22 OCT 2009 to 19 NOV 2009



CATEGORY	A	B	C	D
LPV DA		1117- ³ / ₄	250 (300- ³ / ₄)	
LNAV/DA VNAV		1299-1 ¹ / ₂	432 (500-1 ¹ / ₂)	
LNAV MDA	1300- ³ / ₄	433 (500- ³ / ₄)	1300-1 ¹ / ₄ 433 (500-1 ¹ / ₄)	1300-1 ¹ / ₂ 433 (500-1 ¹ / ₂)
CIRCLING		1380-1 ¹ / ₂	507 (600-1 ¹ / ₂)	1480-2 607 (700-2)

WATERLOO, IOWA
 Orig 09015

42°33'N-92°24'W

WATERLOO RGNL (A.L.O) RNAV (GPS) RWY 30