

# RNAV (GPS) RWY 18

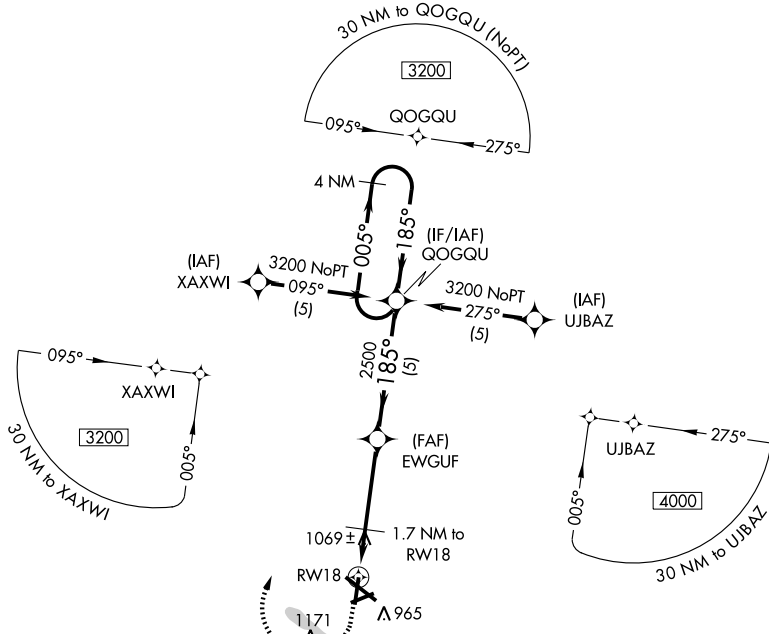
WATERLOO RGNL (A.L.O)

APP CRS	Rwy Idg	<b>6002</b>
<b>185°</b>	TDZE	<b>870</b>
	Apt Elev	<b>873</b>

**▽** GPS or RNP- 0.3 required. DME/DME RNP- 0.3 NA. **▲** NA

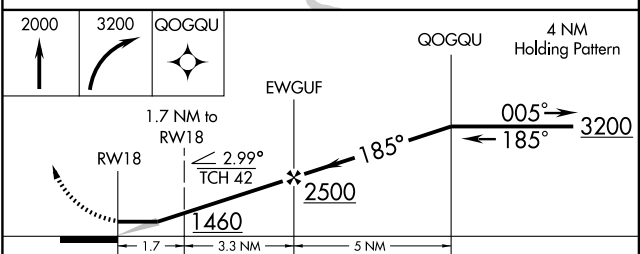
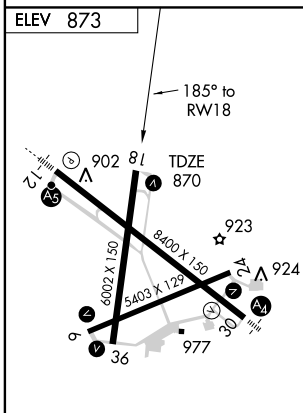
MISSED APPROACH: Climb to 2000, then climbing right turn to 3200 direct QOQQU WP and hold.

ATIS <b>120.65</b>	WATERLOO APP CON * <b>118.9 251.15</b>	WATERLOO TOWER * <b>125.075 (CTAF) 257.8</b>	GND CON <b>121.9 269.1</b>	UNICOM <b>122.95</b>
-----------------------	---	---	-------------------------------	-------------------------



NC-3, 22 OCT 2009 to 19 NOV 2009

NC-3, 22 OCT 2009 to 19 NOV 2009



MIRL Rwy 6-24  
MIRL Rwy 18-36 **Ⓛ**  
HIRL Rwy 12-30 **Ⓛ**  
REIL Rwy 6, 18, 24, and 36

CATEGORY	A	B	C	D
LNAV MDA	1320-1	450 (500-1)	1320-1¼ 450 (500-1¼)	1320-1½ 450 (500-1½)
CIRCLING	1380-1	507 (600-1)	1380-1½ 507 (600-1½)	1480-2 607 (700-2)