

RNAV (GPS) RWY 12

WATERLOO RGNL (A.I.O)

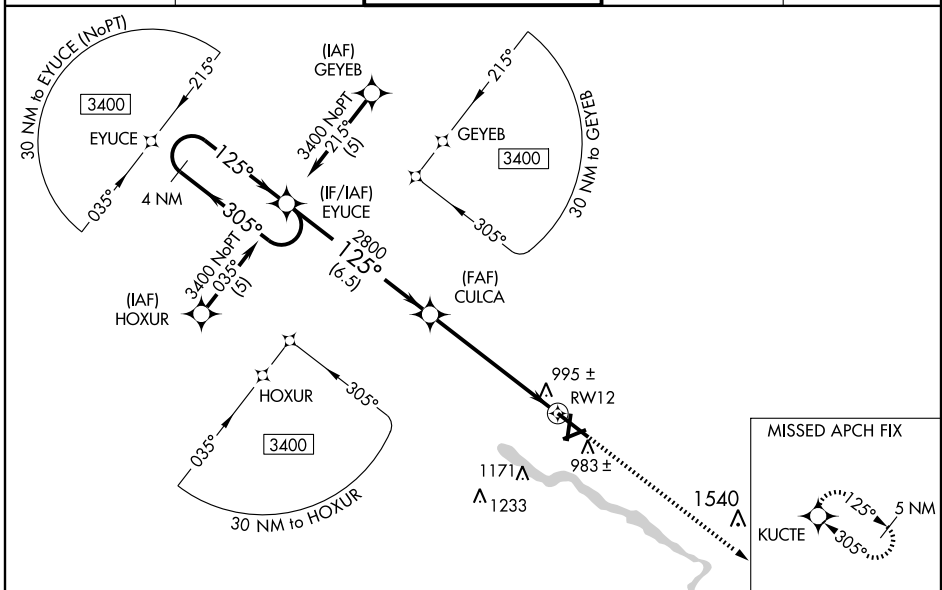
WAAS CH 72801 W12A	APP CRS 125°	Rwy Idg TDZE Apt Elev	8400 873 873
--	------------------------	-----------------------------	---

⚠ For inoperative MALS, increase LPV all Cats visibility to RVR 4000 and LNAV Cat D visibility to RVR 6000. DME/DME-0.3 RNP NA.
⚠ For uncompensated Baro-VNAV systems, LNAV/VNAV NA below -16°C (4°F) or above 47°C (117°F). If local altimeter setting not received, use Independence altimeter setting and increase all DAs /MDAs 80'.
 Baro-VNAV and VDP NA when using Independence altimeter setting.

MALS

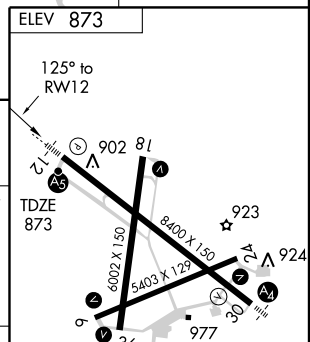
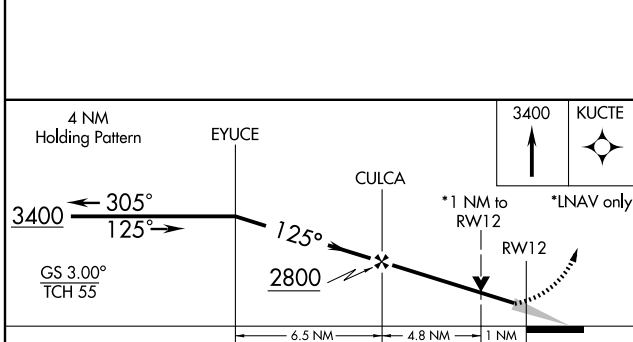
MISSED APPROACH: Climb to 3400 direct KUCTE and hold.

ATIS 120.65	WATERLOO APP CON* 118.9 251.15	WATERLOO TOWER* 125.075 (CTAF) 0 257.8	GND CON 121.9 269.1	UNICOM 122.95
-----------------------	--	--	-------------------------------	-------------------------



NC-3, 22 OCT 2009 to 19 NOV 2009

NC-3, 22 OCT 2009 to 19 NOV 2009



CATEGORY	A	B	C	D
LPV DA		1123/24	250 (300-½)	
LNAV/DA VNAV		1273/40	400 (400-¾)	
LNAV MDA	1260/24	387 (400-½)		1260/50 387 (400-1)
CIRCLING	1380-1¼ 507 (600-1¼)		1380-1½ 507 (600-1½)	1480-2 607 (700-2)

