


# ILS or LOC RWY 12

WATERLOO RGNL (A.L.O)

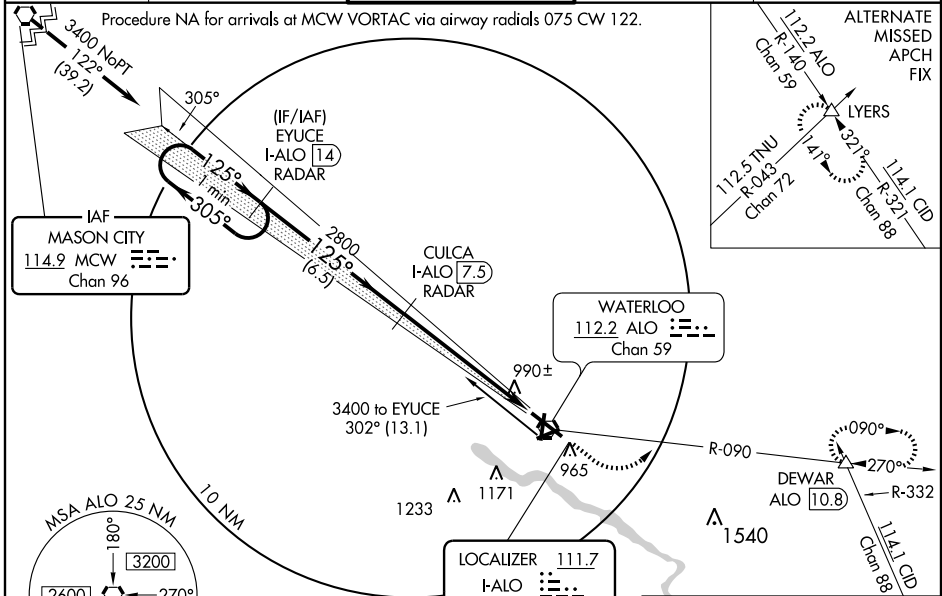
LOC/DME I-ALO <b>111.7</b> Chan <b>54</b>	APP CRS <b>125°</b>	Rwy ldg <b>8400</b> TDZE <b>873</b> Apt Elev <b>873</b>
---	------------------------	---

**⚠** For inoperative MALSR when using Oelwin Muni altimeter setting, increase S-ILS all Cats visibility to RVR 5000. DME or RADAR required  
**\*\*** RVR 1800 authorized with the use of FD or AP or HUD to DA.  
 When local altimeter setting not received, use Oelwin Muni altimeter setting and increase all DA 76 feet and all MDA 80 feet. Increase S-LOC Cat C visibility to RVR 5000 and circling Cat C/D visibility ¼ mile. VDP NA when using Oelwin Muni altimeter setting.

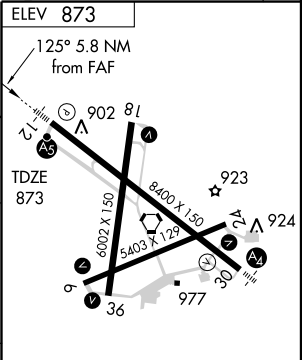
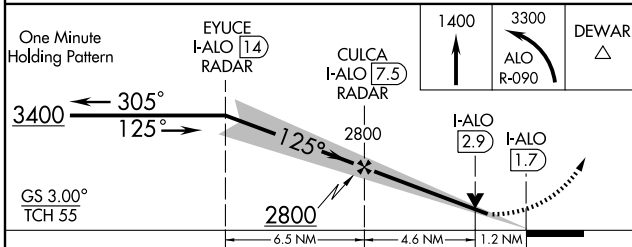
**MALSR**  
  
**MISSED APPROACH:** Climb to 1400, then climbing left turn to 3300 via ALO VORTAC R-090 to DEWAR Int and hold.

ATIS <b>120.65</b>	WATERLOO APP CON * <b>118.9 251.15</b>	WATERLOO TOWER * <b>125.075 (CTAF) 0 257.8</b>	GND CON <b>121.9 269.1</b>	UNICOM <b>122.95</b>
-----------------------	---	---	-------------------------------	-------------------------

Procedure NA for arrivals at MCW VORTAC via airway radials 075 CW 122.



**DME or RADAR REQUIRED**



CATEGORY	A	B	C	D
S-ILS 12	**1073/24 200 (200-½)			
S-LOC 12	1300/24	427 (500-½)	1300/40 427 (500-¾)	1300/50 427 (500-1)
CIRCLING	1420-1	547 (600-1)	1420-1½ 547 (600-1½)	1480-2 607 (700-2)

MIRL Rwy 6-24  
 MIRL Rwy 18-36  
 HIRL Rwy 12-30  
 REIL Rws 6, 18, 24, and 36

FAF to MAP 5.8 NM

Knots	60	90	120	150	180
Min:Sec	5:48	3:52	2:54	2:19	1:56

NC-3, 22 OCT 2009 to 19 NOV 2009

NC-3, 22 OCT 2009 to 19 NOV 2009