

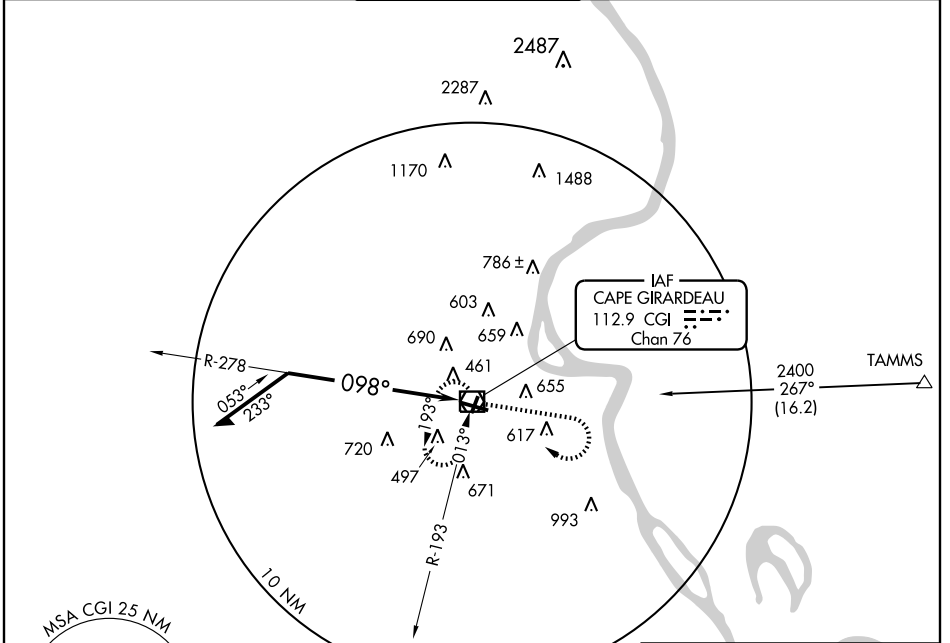
VOR/DME CGI <b>112.9</b> Chan <b>76</b>	APP CRS <b>098°</b>	Rwy Idg <b>6499</b> TDZE <b>338</b> Apt Elev <b>342</b>
---	------------------------	---

# VOR RWY 10

CAPE GIRARDEAU RGNL (CGI)

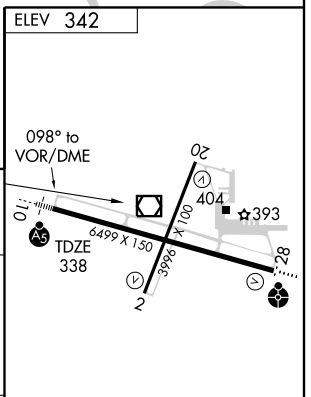
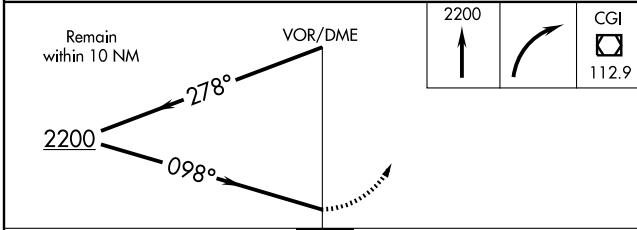
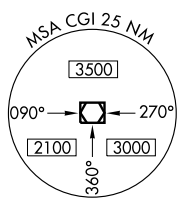
		MISSED APPROACH: Climb to 2200 then right turn direct CGI VOR/DME and hold.		
--	--	---	--	--

ASOS <b>120.55</b>	MEMPHIS CENTER <b>133.65 292.15</b>	CAPE GIRARDEAU TOWER * <b>125.525</b> (CTAF)	GND CON <b>121.6</b>	UNICOM <b>122.95</b>
-----------------------	--	---	-------------------------	-------------------------



NC-3, 22 OCT 2009 to 19 NOV 2009

NC-3, 22 OCT 2009 to 19 NOV 2009



CATEGORY	A	B	C	D
S-10	980-1/2 642 (700-1/2)		980-1 1/4 642 (700-1 1/4)	980-1 1/2 642 (700-1 1/2)
CIRCLING	980-1 638 (700-1)		980-1 3/4 638 (700-1 3/4)	1000-2 658 (700-2)

MIRL Rwy 2-20  
HIRL Rwy 10-28