

RNAV (GPS) RWY 28

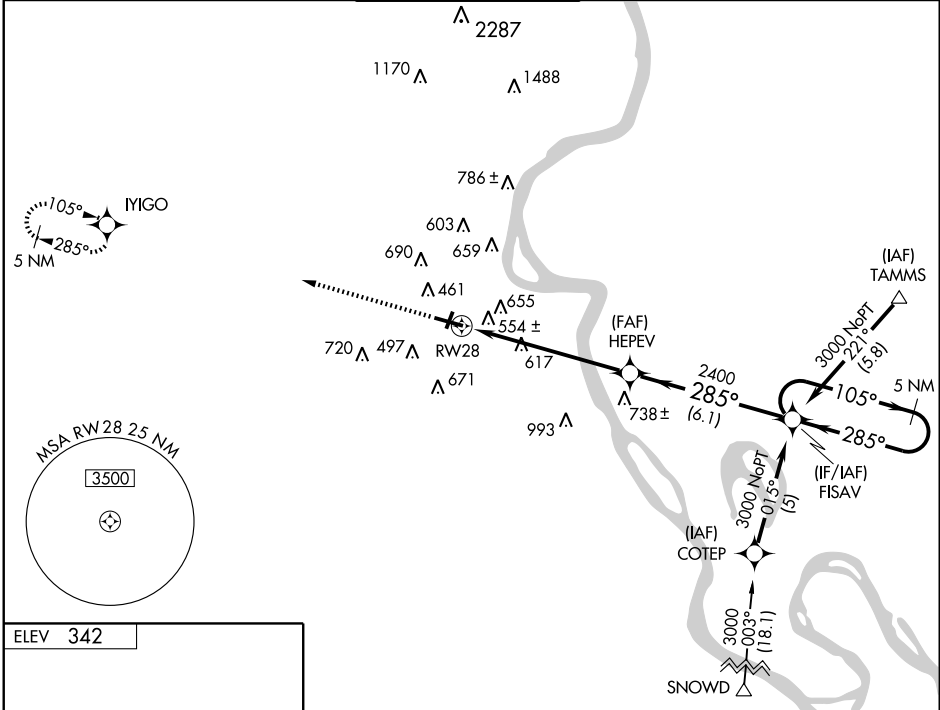
CAPE GIRARDEAU RGNL (CGI)

WAAS CH 90199 W28A	APP CRS 285°	Rwy Idg TDZE Apt Elev	6499 341 342
--	------------------------	-----------------------------	---

▽ DME/DME RNP-0.3 NA. Baro-VNAV NA below -15°C (5°F).
If local altimeter setting not received, use Carbondale, IL altimeter setting and increase all DAs/MDAs 100 feet.
▲ Baro-VNAV and VDP NA with Carbondale altimeter setting.
Inoperative table does not apply to LPV, LNAV/VNAV, and LNAV Cat. C.

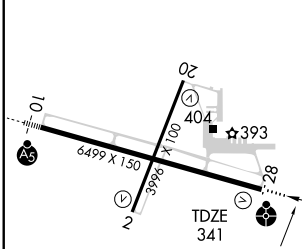
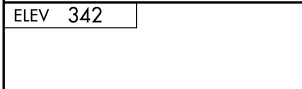
ODALS
 MISSED APPROACH: Climb to 3000 direct IYIGO and hold.

ASOS 120.55	MEMPHIS CENTER 133.65 292.15	CAPE GIRARDEAU TOWER * 125.525 (CTAF)	GND CON 121.6	UNICOM 122.95
-----------------------	--	---	-------------------------	-------------------------



NC-3, 22 OCT 2009 to 19 NOV 2009

NC-3, 22 OCT 2009 to 19 NOV 2009



3000	IYIGO	5 NM Holding Pattern	
*LNAV only		FISAV	
*1.6 NM to RW28		105° → 3000	
RW28		← 285°	
1.6 NM		2400	
4.6 NM		285°	
6.1 NM		GS 3.00°	
		TCH 38	

CATEGORY	A	B	C	D
LPV DA		718-1¼	377 (400-1¼)	
LNAV/VNAV DA		948-2¼	607 (700-2¼)	
LNAV MDA	880-¾	539 (600-¾)	880-1½ 539 (600-1½)	880-1¾ 539 (600-1¾)
CIRCLING	960-2¼ 618 (700-2¼)			1000-2¼ 658 (700-2¼)