

# RNAV (GPS) RWY 10

CAPE GIRARDEAU RGNL (CGI)

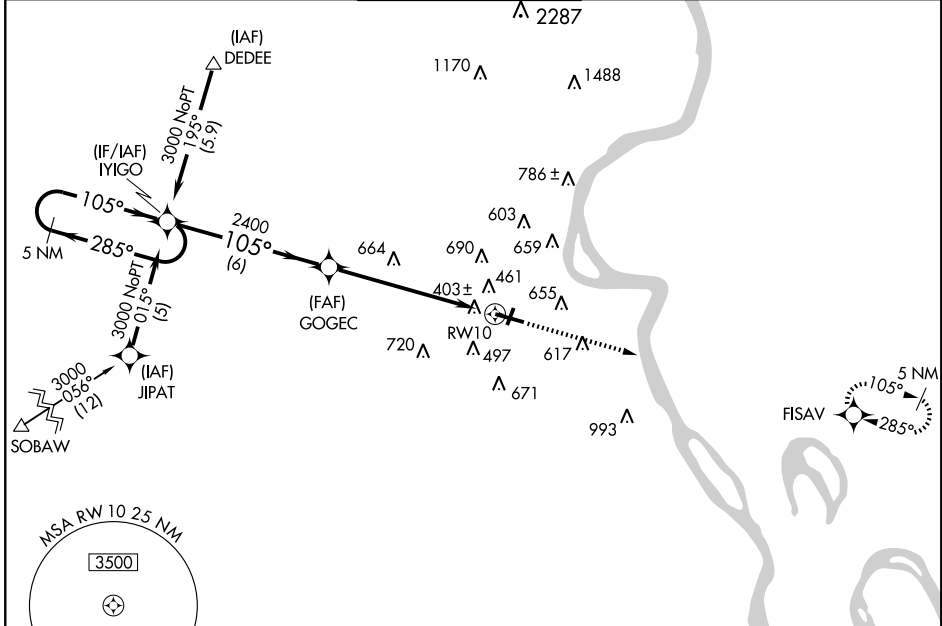
WAAS CH <b>61399</b> <b>W10A</b>	APP CRS <b>105°</b>	Rwy Idg <b>6499</b> TDZE <b>338</b> Apt Elev <b>342</b>
--	------------------------	---

**▼** DME/DME RNP-0.3 NA. Baro-VNAV NA below -15°C (5°F).  
 If local altimeter setting not received, use Carbondale, IL altimeter setting and increase all DAs/MDAs 100 feet.  
**▲** Baro-VNAV and VDP NA with Carbondale altimeter setting.  
 For inoperative MALSR increase LPV all Cats. visibility to ¾.

**MALSR**

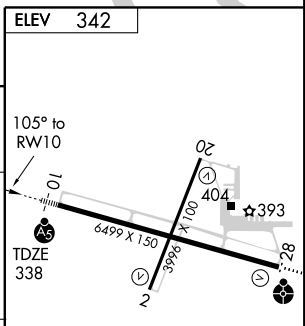
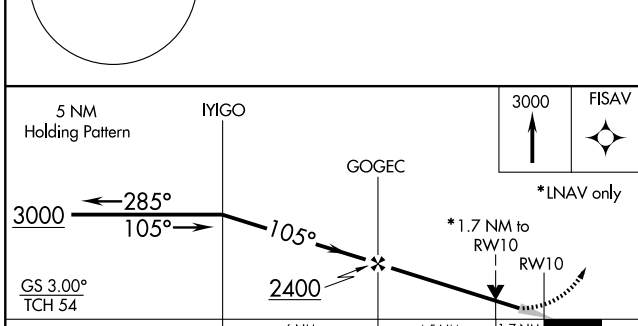
**MISSED APPROACH:** Climb to 3000 direct FISAV and hold.

<b>ASOS</b> <b>120.55</b>	<b>MEMPHIS CENTER</b> <b>133.65 292.15</b>	<b>CAPE GIRARDEAU TOWER *</b> <b>125.525 (CTAF) 0</b>	<b>GND CON</b> <b>121.6</b>	<b>UNICOM</b> <b>122.95</b>
------------------------------	---	--	--------------------------------	--------------------------------



NC-3, 22 OCT 2009 to 19 NOV 2009

NC-3, 22 OCT 2009 to 19 NOV 2009



CATEGORY	A	B	C	D
LPV DA		588-½	250 (300-½)	
LNAV/VNAV DA		723-¾	385 (400-¾)	
LNAV MDA	940-½	602 (600-½)	940-1¼ 602 (600-1¼)	940-1½ 602 (600-1½)
CIRCLING	940-1¼ 598 (600-1¼)	960-1¼ 618 (700-1¼)	960-1¾ 618 (700-1¾)	1000-2 658 (700-2)

MIRL Rwy 2-20  
HIRL Rwy 10-28