

# LOC/DME BC RWY 28

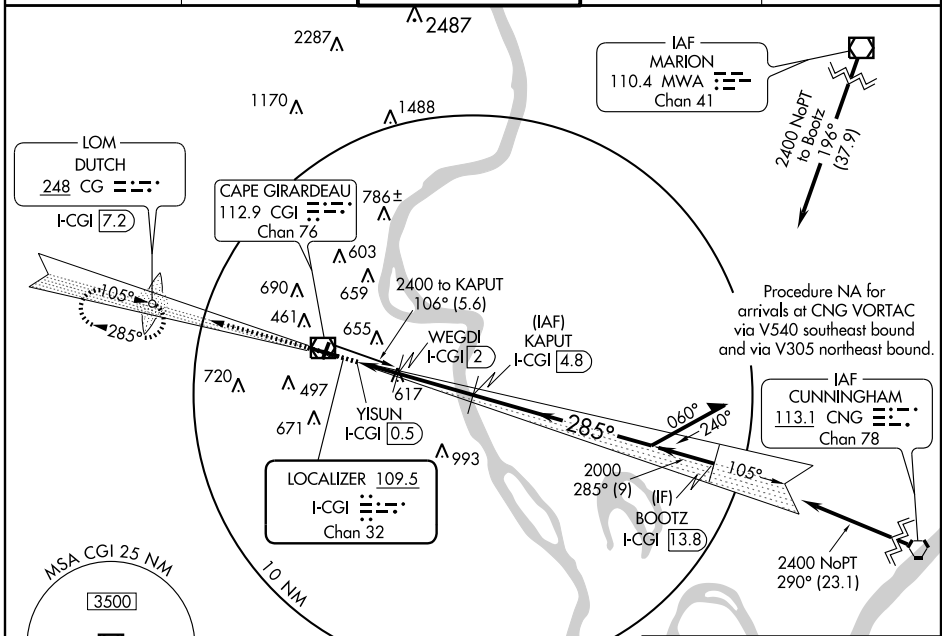
CAPE GIRARDEAU RGNL (CGI)

LOC I-CGI <b>109.5</b> Chan 32	APP CRS <b>285°</b>	Rwy ldg TDZE Apt Elev	<b>6499</b> <b>341</b> <b>342</b>
--------------------------------------	------------------------	-----------------------------	---

**▼** Inoperative table does not apply to Cat C. Visibility reduction by helicopters NA. When local altimeter setting not received, use Cairo Rgnl altimeter setting and increase all MDA 60 feet and increase Circling Cats C, D visibility ¼ mile. VDP NA when using Cairo Rgnl altimeter setting.

**ODALS** MISSED APPROACH: Climb to 2400 via I-CGI front course to DUTCH LOM/I-CGI 7.2 DME and hold.

ASOS <b>120.55</b>	MEMPHIS CENTER <b>133.65 292.15</b>	CAPE GIRARDEAU TOWER * <b>125.525</b> (CTAF)	GND CON <b>121.6</b>	UNICOM <b>122.95</b>
-----------------------	--	---	-------------------------	-------------------------



NC-3, 22 OCT 2009 to 19 NOV 2009

NC-3, 22 OCT 2009 to 19 NOV 2009



2400 ↑ I-CGI	CG 	Use I-CGI DME when on localizer course. Disregard glide slope indications.			
248		Remain within 10 NM.			
YISUN I-CGI 0.5	WEGDI I-CGI 2	KAPUT I-CGI 4.8	105°		
1060		2000	285°		
≤ 3.05° TCH 38		2400			
0.7		0.9		0.6	
2.8 NM					
CATEGORY	A	B	C	D	
S-28	880-¾ 539 (600-¾)	539 (600-¾)	880-1½ 539 (600-1½)	880-1¾ 539 (600-1¾)	
CIRCLING	880-1 538 (600-1)	960-1 618 (700-1)	960-1¾ 618 (700-1¾)	1000-2 658 (700-2)	MIRL Rwy 2-20 HIRL Rwy 10-28

