

LOVELOCK, NEVADA

AL-941 (FAA)

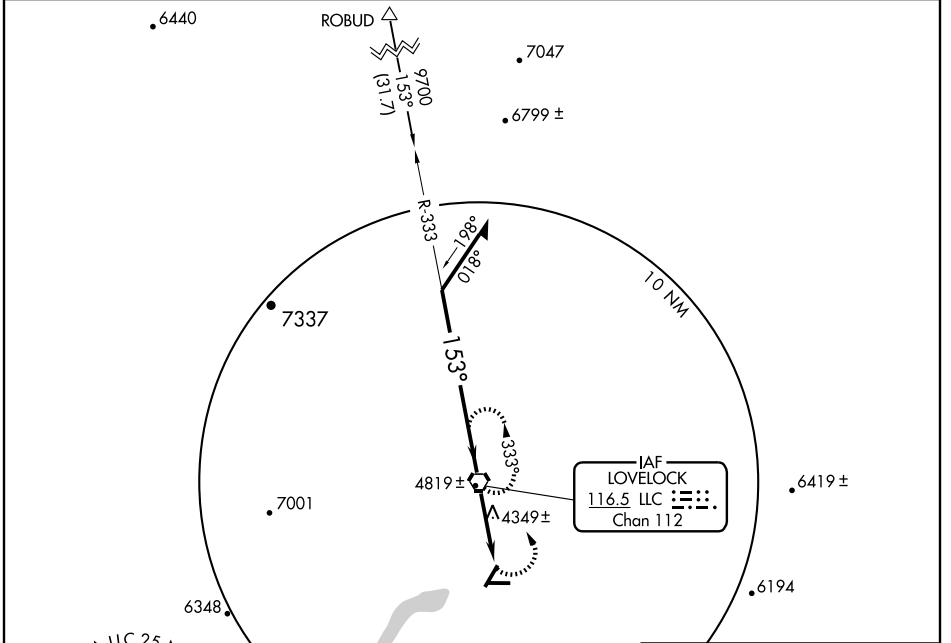
VORTAC LLC <b>116.5</b> Chan 112	APP CRS <b>153°</b>	Rwy Idg TDZE Apt Elev	<b>N/A</b> <b>N/A</b> <b>3904</b>
--	------------------------	-----------------------------	---

# VOR or GPS-C

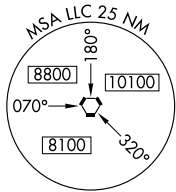
LOVELOCK/DERBY FIELD (I.O.L.)

**▲** MISSED APPROACH: Climbing left turn to 8600 via R-153 to LLC VORTAC and hold, continue climb-in-hold to 8600.

ASOS <b>120.675</b>	OAKLAND CENTER <b>128.8 285.5</b>	UNICOM <b>122.8 (CTAF) 0</b>
------------------------	--------------------------------------	---------------------------------



SW-4, 22 OCT 2009 to 19 NOV 2009



CATEGORY	A	B	C	D	FAF to MAP 3 NM					
CIRCLING	5800-1¼ 1897 (1900-1¼)	5800-1½ 1897 (1900-1½)	5800-3	1897 (1900-3)	Knots	60	90	120	150	180
					Min:Sec	3:00	2:00	1:30	1:12	1:00

LOVELOCK, NEVADA  
Orig-B 09015

40°04'N-118°34'W

# LOVELOCK/DERBY FIELD (I.O.L.)

## VOR or GPS-C