

LOVELOCK, NEVADA

AL-941 (FAA)

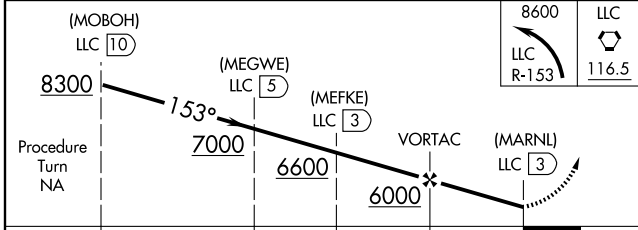
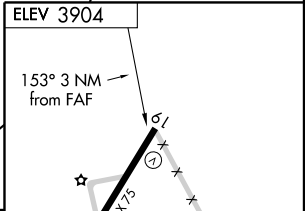
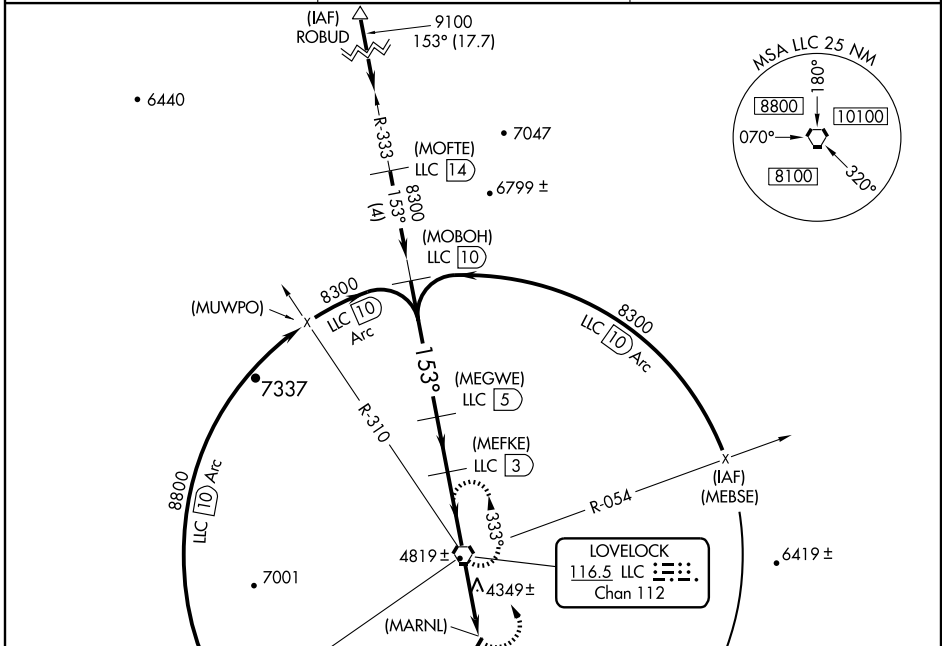
VORTAC LLC 116.5 Chan 112	APP CRS 153°	Rwy Idg TDZE Apt Elev N/A N/A 3904
---	------------------------	--

VOR/DME or GPS-A

LOVELOCK/ DERBY FIELD (L.O.L)

MISSSED APPROACH: Climbing left turn to 8600 via R-153 to LLC VORTAC and hold, continue climb in hold to 8600.

ASOS 120.675	OAKLAND CENTER 128.8 285.5	UNICOM 122.8 (CTAF) 0
------------------------	--------------------------------------	---------------------------------



CATEGORY	A	B	C	D
CIRCLING	4800-1¼	897 (900-1¼)	4800-2¾ 897 (900-2¾)	4800-3 897 (900-3)

REIL Rwys 1 and 19 0
MIRL Rwy 1-19 0

SW-4, 22 OCT 2009 to 19 NOV 2009

SW-4, 22 OCT 2009 to 19 NOV 2009

LOVELOCK, NEVADA
Orig-B 09015

40°04'N-118°34'W

LOVELOCK/ DERBY FIELD (L.O.L)

VOR/DME or GPS-A