

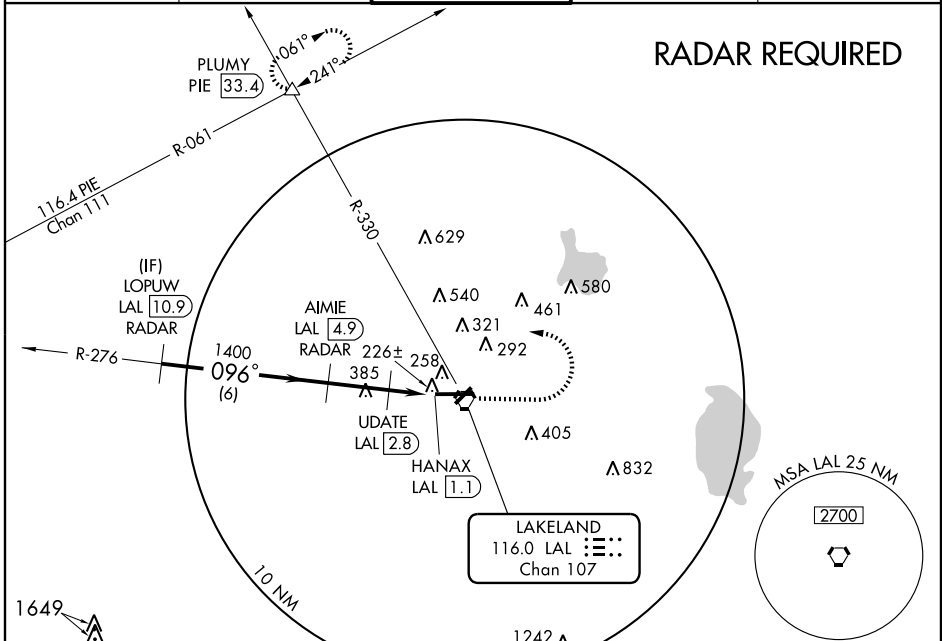
VOR RWY 9 LAKELAND UNDER RGNL (L.A.L.)

VORTAC LAL 116.0 Chan 107	APP CRS 096°	Rwy Idg TDZE 132 Apt Elev 142	8500
---	------------------------	---	-------------

▼ DME or RADAR required. Visibility reduction by helicopters NA.
▲ When control tower closed, use Plant City Muni altimeter setting and increase all MDAs 20 feet. VDP NA when using Plant City Muni altimeter setting.

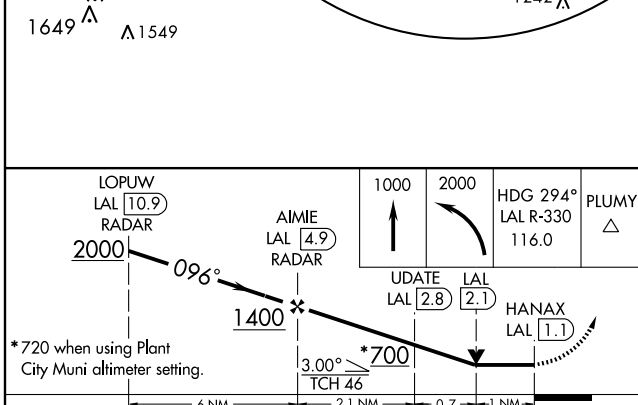
MISSED APPROACH: Climb to 1000 then climbing left turn to 2000 via heading 294° and via LAL VORTAC R-330 to PLUMY Int/PIE 33.4 DME and hold.

ATIS 118.025	TAMPA APP CON 120.65 290.3	LAKELAND TOWER ★ 124.5 (CTAF) 0	GND CON 121.4	UNICOM 122.95
------------------------	--------------------------------------	---	-------------------------	-------------------------

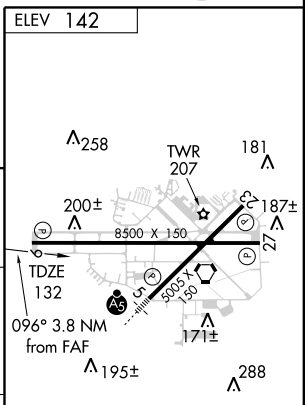


SE-3, 22 OCT 2009 to 19 NOV 2009

SE-3, 22 OCT 2009 to 19 NOV 2009



*720 when using Plant City Muni altimeter setting.



CATEGORY	A	B	C	D
S-9	700-1 568 (600-1)		700-1½ 568 (600-1½)	700-1¾ 568 (600-1¾)
CIRCLING	700-1 568 (600-1)		700-1½ 568 (600-1½)	700-2 558 (600-2)

HRL Rlwys 5-23 and 9-27				
FAF to MAP 3.8 NM				
Knots	60	90	120	150 180
Min:Sec	3:48	2:32	1:54	1:31 1:16