

# VOR RWY 27

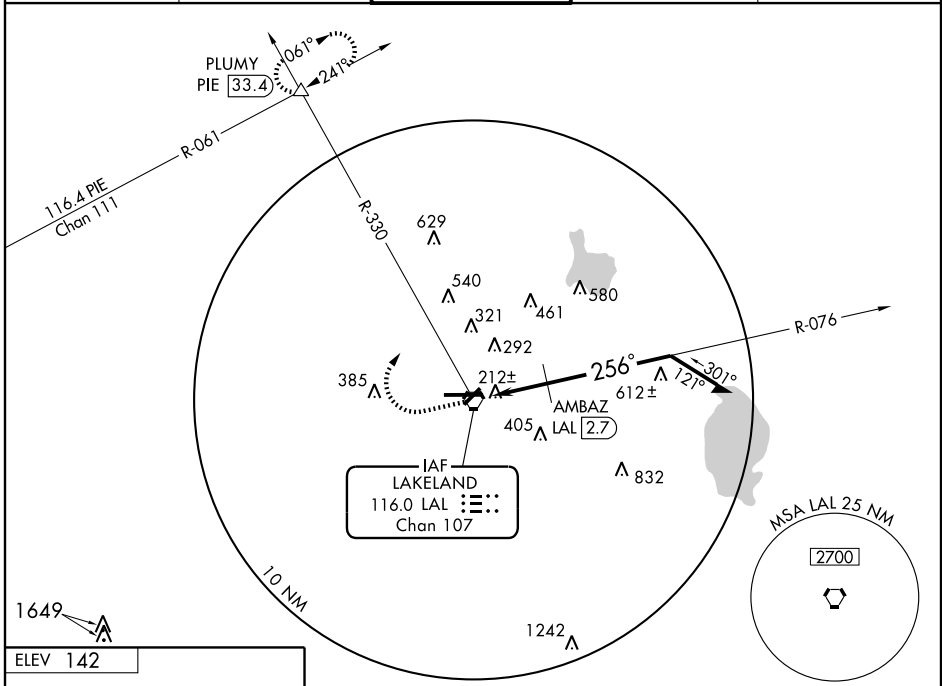
LAKELAND LINDER RGNL (LAL)

VORTAC LAL <b>116.0</b> Chan <b>107</b>	APP CRS <b>256°</b>	Rwy Idg TDZE <b>142</b> Apt Elev <b>142</b>
---	------------------------	---

**▼** When control tower closed, use Plant City Muni altimeter setting and increase all MDAs 20 feet and increase AMBAZ Fix minimums S-27 Cat. D visibility to 1 1/4 mile.  
**▲** Visibility reduction by helicopters NA.

MISSED APPROACH: Climb to 1000 then climbing right turn to 2000 via heading 017° and LAL VORTAC R-330 to PLUMY Int/PIE 33.4 DME and hold.

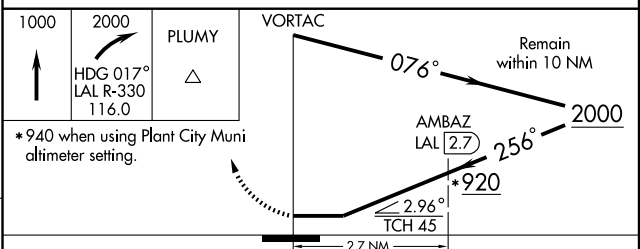
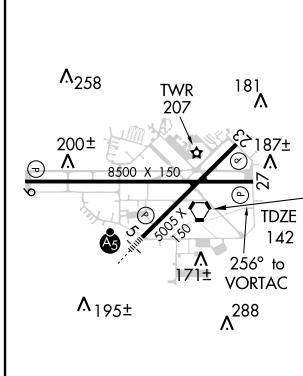
ATIS <b>118.025</b>	TAMPA APP CON <b>120.65 290.3</b>	LAKELAND TOWER * <b>124.5 (CTAF)</b>	GND CON <b>121.4</b>	UNICOM <b>122.95</b>
------------------------	--------------------------------------	---	-------------------------	-------------------------



SE-3, 22 OCT 2009 to 19 NOV 2009

SE-3, 22 OCT 2009 to 19 NOV 2009

ELEV <b>142</b>
-----------------



CATEGORY	A	B	C	D
S-27	920-1 778 (800-1)	920-1 1/4 778 (800-1 1/4)	920-2 1/4 778 (800-2 1/4)	920-2 1/2 778 (800-2 1/2)
CIRCLING	920-1 778 (800-1)	920-1 1/4 778 (800-1 1/4)	920-2 1/4 778 (800-2 1/4)	920-2 1/2 778 (800-2 1/2)
AMBAZ FIX MINIMUMS				
S-27	480-1 338 (400-1)			
CIRCLING	560-1 418 (500-1)	660-1 518 (600-1)	660-1 1/2 518 (600-1 1/2)	700-2 558 (600-2)

HIRL Rws 5-23 and 9-27

Knots	60	90	120	150	180
Min:Sec					