

# RNAV (GPS) RWY 27

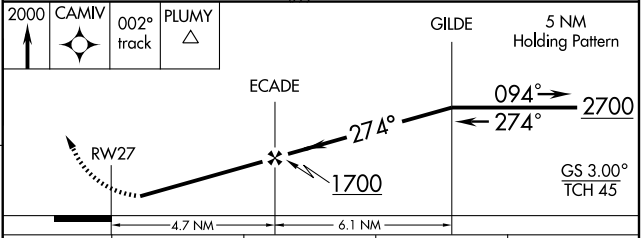
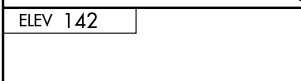
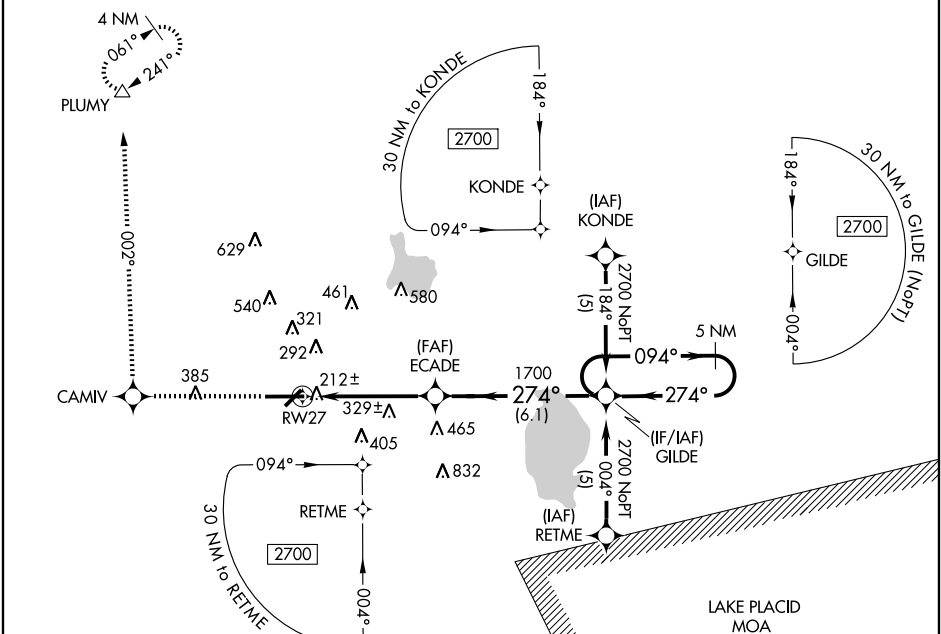
LAKELAND LINDER RGNL (L.A.L.)

WAAS CH <b>82605</b> <b>W27A</b>	APP CRS <b>274°</b>	Rwy Idg TDZE <b>142</b> Apt Elev <b>142</b>	<b>8500</b>
--	------------------------	---	-------------

For uncompensated Baro-VNAV systems, LNAV/VNAV NA below -15°C (5°F) or above 48°C (118°F). Baro-VNAV NA when using Plant City Muni altimeter setting. DME/DME-0.3 NA. Visibility reduction by helicopters NA. When control tower closed, use Plant City Muni altimeter setting and increase all DAs/MDAs 20 feet, and increase LPV visibility to 1½ mile.

**MISSED APPROACH:**  
Climb to 2000 direct CAMIV and via 002° track to PLUMY and hold.

ATIS <b>118.025</b>	TAMPA APP CON <b>120.65 290.3</b>	LAKELAND TOWER ★ <b>124.5 (CTAF) 0</b>	GND CON <b>121.4</b>	UNICOM <b>122.95</b>
------------------------	--------------------------------------	---	-------------------------	-------------------------



CATEGORY	A	B	C	D
LPV DA	449-1 307 (400-1)			
LNAV/VNAV DA	482-1¼ 340 (400-1¼)			
LNAV MDA	580-1	438 (500-1)	580-1¼ 438 (500-1¼)	580-1½ 438 (500-1½)
CIRCLING	580-1 438 (500-1)	660-1 518 (600-1)	660-1½ 518 (600-1½)	700-2 558 (600-2)

HIRL Rwy 5-23 and 9-27

SE-3, 22 OCT 2009 to 19 NOV 2009

SE-3, 22 OCT 2009 to 19 NOV 2009