


RNAV (GPS) RWY 4

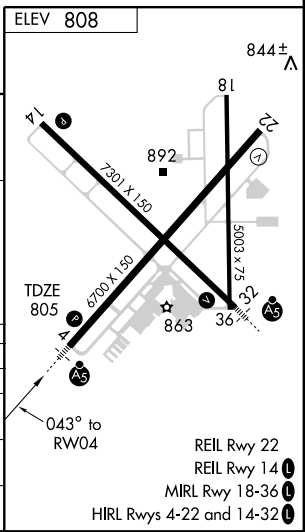
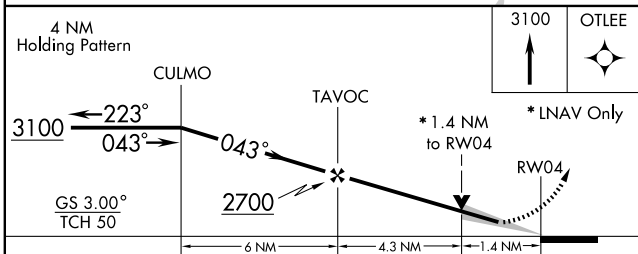
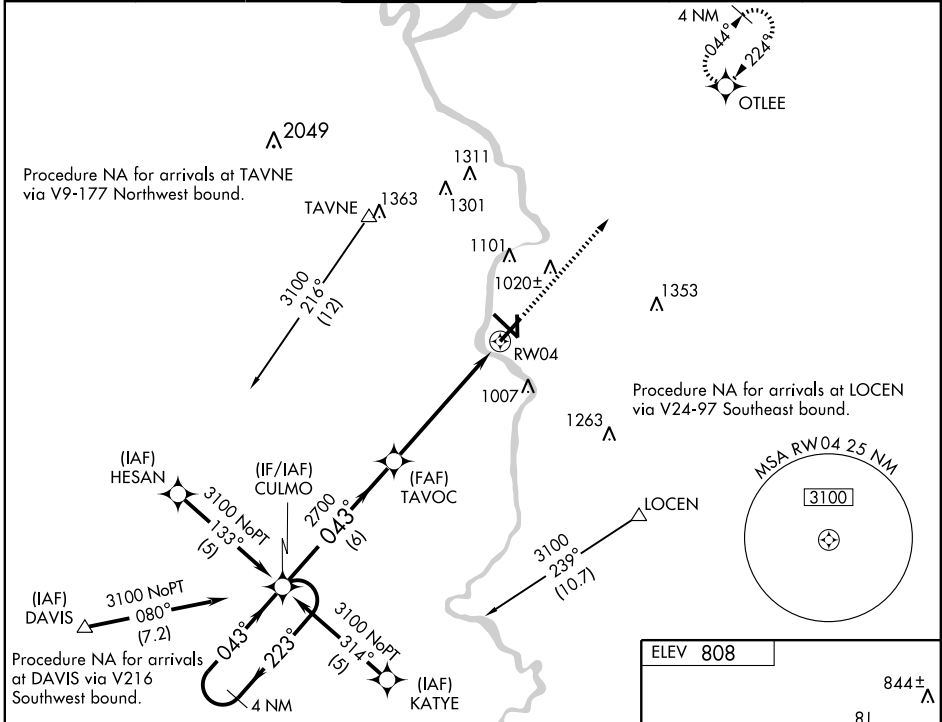
JANESVILLE/SOUTHERN WISCONSIN RGNL (JVL)

APP CRS	Rwy Idg	6700
043°	TDZE	805
	Apt Elev	808

Baro-VNAV NA below -17°C (3°F), DME/DME RNP-0.3 NA.
 Baro-VNAV and VDP NA with Rockford altimeter setting. Circling not authorized
 NA at night to Rwy 18. When control tower closed, obtain local altimeter setting on UNICOM; when not received use Rockford altimeter setting and increase all DA/MDAs 80 feet. GPS or RNP-0.3 Required.

MALSR

MISSED APPROACH: Climb to 3100 direct OTLEE WP and hold.

ATIS 128.25	ROCKFORD APP CON 121.0 327.0	JANESVILLE TOWER ★ 118.8 (CTAF) 0 225.4	GND CON 121.65	CLNC DEL 121.65	UNICOM 122.95
-----------------------	--	---	--------------------------	---------------------------	-------------------------



CATEGORY	A	B	C	D
GLS PA DA	NA			
LNAV/VNAV DA	1080-½ 275 (300-½)		1080-¾ 275 (300-¾)	
LNAV MDA	1300-½ 495 (500-½)	1300-¾ 495 (500-¾)	1300-1 495 (500-1)	1420-2 612 (700-2)
CIRCLING	1300-1 492 (500-1)	1300-1½ 492 (500-1½)	1420-2 612 (700-2)	

RNAV (GPS) RWY 4

EC-3, 22 OCT 2009 to 19 NOV 2009

EC-3, 22 OCT 2009 to 19 NOV 2009