

# RNAV (GPS) RWY 22

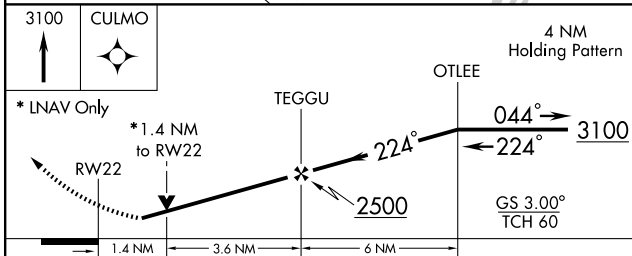
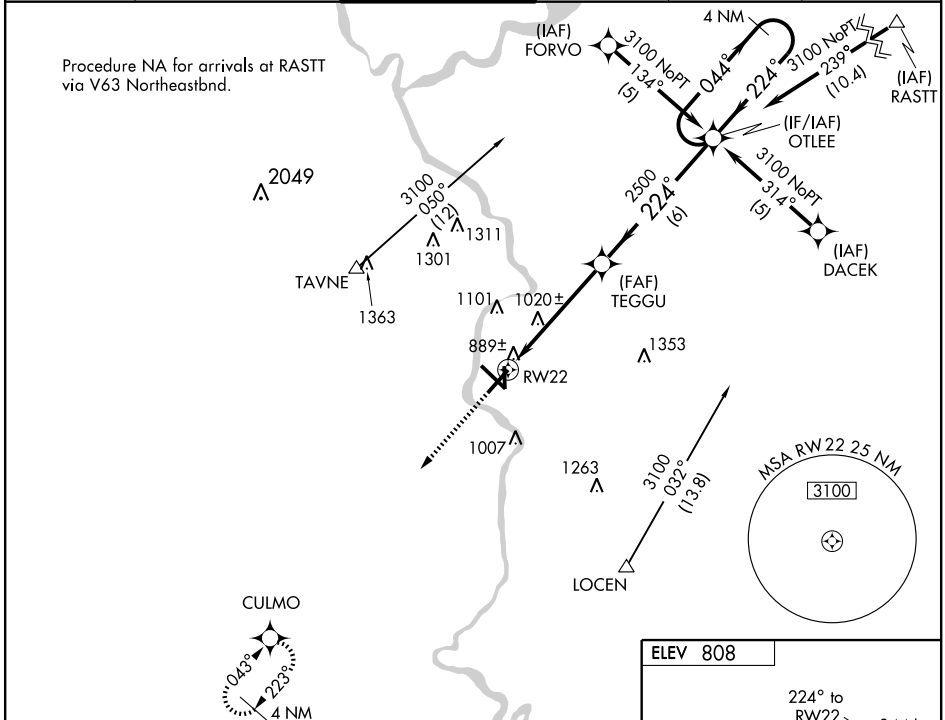
JANESVILLE/SOUTHERN WISCONSIN RGNL (JVL)

APP CRS	Rwy Idg	<b>6700</b>
<b>224°</b>	TDZE	<b>805</b>
	Apt Elev	<b>808</b>

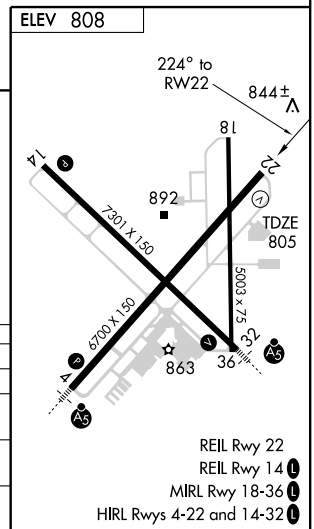
**▼** Baro-VNAV NA below -17°C (3°F). DME/DME RNP-0.3 NA.  
**▲** Baro-VNAV and VDP NA with Rockford altimeter setting. Circling not authorized at night to Rwy 18. When control tower closed, obtain local altimeter setting on UNICOM; when not received use Rockford altimeter setting and increase all DA/MDAs 80 feet. GPS or RNP-0.3 Required.  
**W**

MISSED APPROACH: Climb to 3100 direct CULMO WP and hold.

ATIS	ROCKFORD APP CON	JANESVILLE TOWER ★	GND CON	CLNC DEL	UNICOM
<b>128.25</b>	<b>121.0 327.0</b>	<b>118.8 (CTAF) 0 225.4</b>	<b>121.65</b>	<b>121.65</b>	<b>122.95</b>



CATEGORY	A	B	C	D
GLS PA DA	NA			
LNAV/VNAV DA	1160-1¼ 355 (400-1¼)			
LNAV MDA	1320-1 515 (600-1)	1320-1½ 515 (600-1½)	1320-1¾ 515 (600-1¾)	
CIRCLING	1320-1¼ 512 (600-1¼)	1320-1½ 512 (600-1½)	1420-2 612 (700-2)	



EC-3, 22 OCT 2009 to 19 NOV 2009

EC-3, 22 OCT 2009 to 19 NOV 2009