

RNAV (GPS) RWY 14

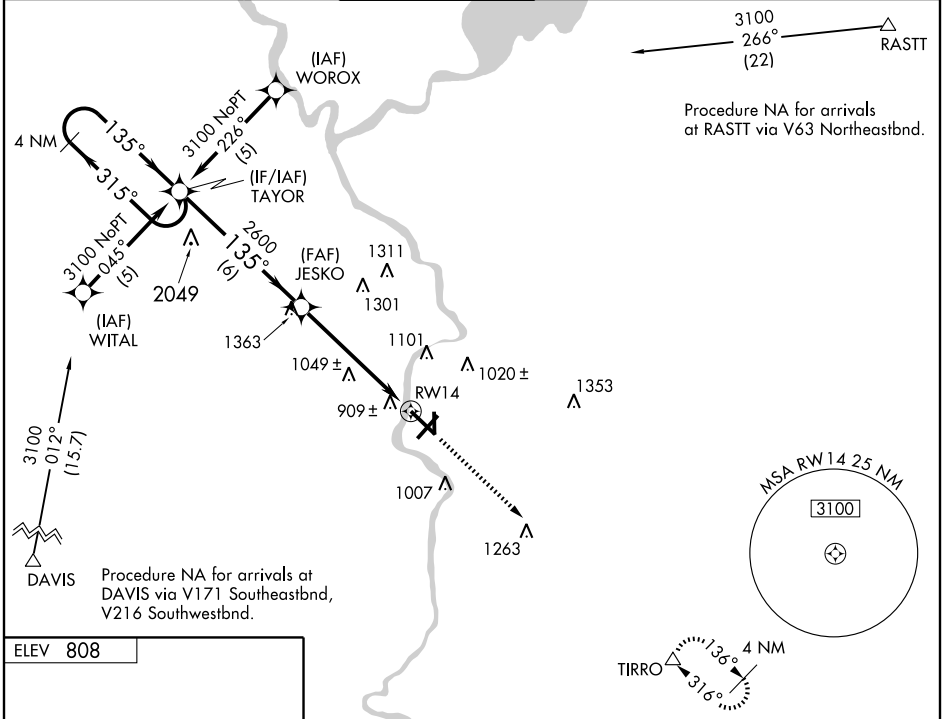
JANESVILLE/SOUTHERN WISCONSIN RGNL (JVL)

| | | |
|-------------|----------|-------------|
| APP CRS | Rwy Idg | 7301 |
| 135° | TDZE | 803 |
| | Apt Elev | 808 |

Baro-VNAV NA below -17°C (3°F). DME/DME RNP-0.3 NA.
 Baro-VNAV and VDP NA with Rockford altimeter setting. Circling not authorized at night to Rwy 18. When control tower closed, obtain local altimeter setting on UNICOM; when not received use Rockford altimeter setting and increase all DA/MDAs 80 feet. GPS or RNP-0.3 Required.

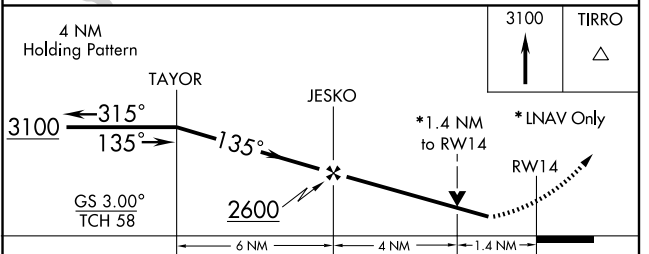
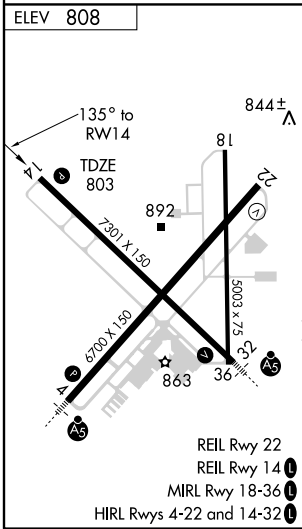
MISSED APPROACH: Climb to 3100 direct TIRRO WP and hold.

| | | | | | |
|---------------|--------------------|-----------------------------|---------------|---------------|---------------|
| ATIS | ROCKFORD APP CON | JANESVILLE TOWER ★ | GND CON | CLNC DEL | UNICOM |
| 128.25 | 121.0 327.0 | 118.8 (CTAF) 0 225.4 | 121.65 | 121.65 | 122.95 |



EC-3, 22 OCT 2009 to 19 NOV 2009

EC-3, 22 OCT 2009 to 19 NOV 2009



| | | | | |
|--------------|----------------------|----------------------|----------------------|--------------------|
| CATEGORY | A | B | C | D |
| GLS PA DA | NA | | | |
| LNAV/VNAV DA | 1200-1½ 397 (400-1½) | | | |
| LNAV MDA | 1300-1 497 (500-1) | 1300-1¼ 497 (500-1¼) | 1300-1½ 497 (500-1½) | |
| CIRCLING | 1300-1½ 492 (500-1½) | | | 1420-2 612 (700-2) |