

ILS or LOC RWY 4

JANESVILLE/SOUTHERN WISCONSIN RGNL (JVL)

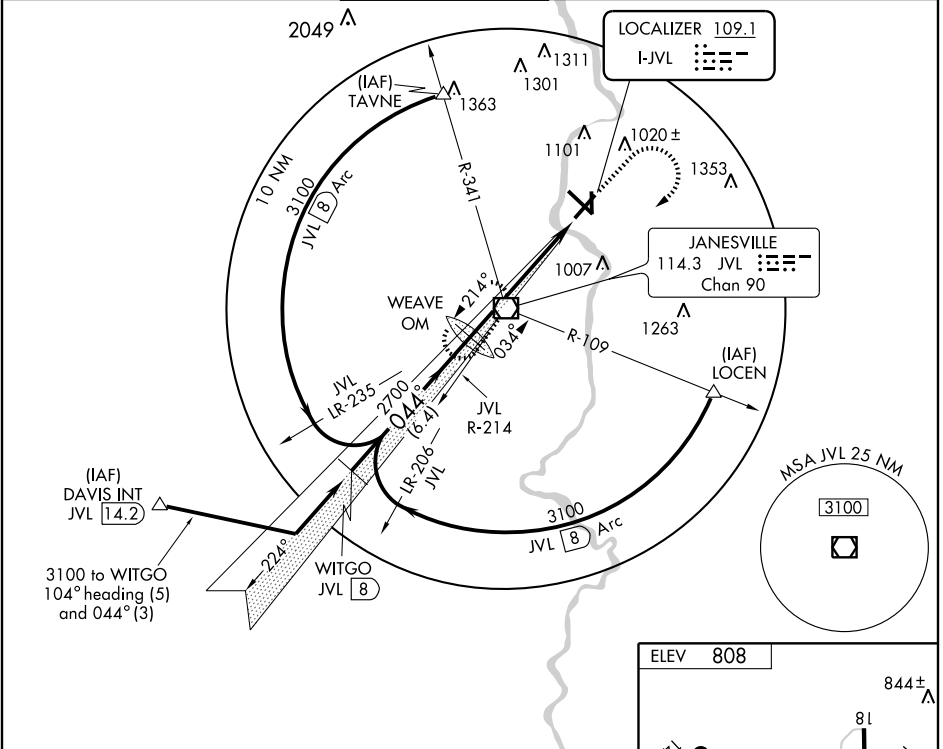
LOC I-JVL 109.1	APP CRS 044°	Rwy Idg 6700 TDZE 805 Apt Elev 808
---------------------------	------------------------	---

⚠ When control tower closed, obtain local altimeter setting on UNICOM; when not received use Rockford altimeter setting and increase all DH/MDA's 80 feet. Circling not authorized at night to Rwy 18.



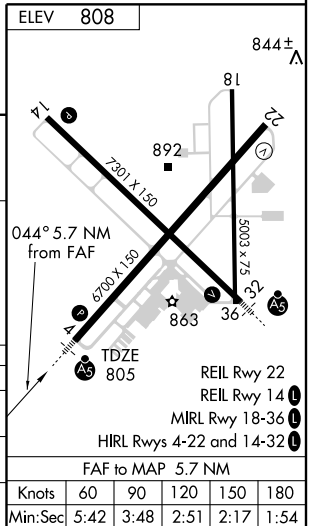
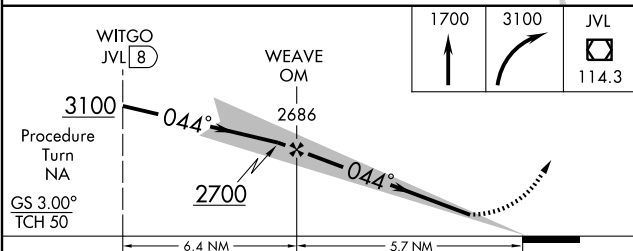
MISSED APPROACH: Climb to 1700 then climbing right turn to 3100 direct JVL VOR/DME and hold.

ATIS 128.25	ROCKFORD APP CON 121.0 327.0	JANESVILLE TOWER ★ 118.8(CTAF) 225.4	GND CON 121.65	CLNC DEL 121.65	UNICOM 122.95
-----------------------	--	--	--------------------------	---------------------------	-------------------------



EC-3, 22 OCT 2009 to 19 NOV 2009

EC-3, 22 OCT 2009 to 19 NOV 2009



CATEGORY	A	B	C	D
S-ILS 4	1005-½		200 (200-½)	
S-LOC 4	1300-½	495 (500-½)	1300-¾ 495 (500-¾)	1300-1 495 (500-1)
CIRCLING	1300-1	492 (500-1)	1300-1½ 492 (500-1½)	1420-2 612 (700-2)