

ILS or LOC RWY 32

JANESVILLE/SOUTHERN WISCONSIN RGNL (JVL)

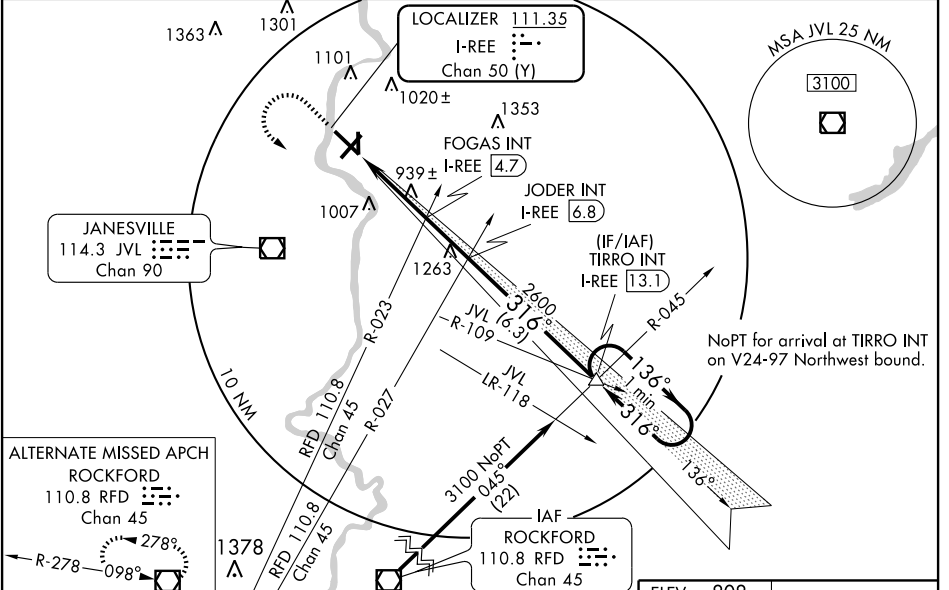
LOC/DME I-REE 111.35 Chan 50 (Y)	APP CRS 316°	Rwy Idg 7301 TDZE 806 Apt Elev 808
---	------------------------	---

When local altimeter setting not received, use Rockford Intl altimeter setting; increase DA to 1075, increase all MDAs 80 feet, increase FOGAS FIX minimums S-LOC 32 Cat. D and circling Cat. D visibility ¼ mile. VDP NA when using Rockford Intl altimeter setting.

⚠ For inoperative MALSRS, increase FOGAS FIX minimums S-LOC 32, Cats. A, B, and C to 1 mile. Inoperative table does not apply to S-ILS-32. Circling to Rwy 18 NA at night.

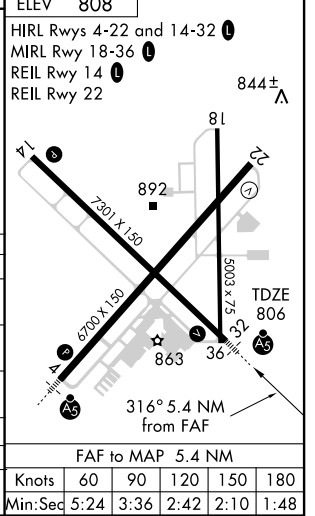
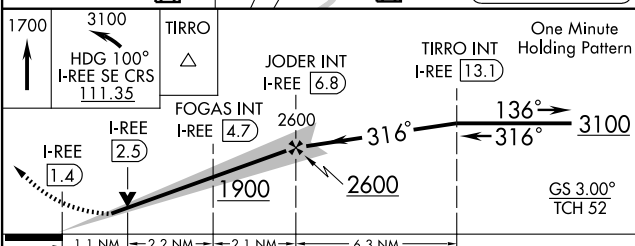
MALSRL
MISSED APPROACH: Climb to 1700 then climbing left turn to 3100 via heading 100° and I-REE SE course to TIRRO INT/13.1 DME and hold.

ATIS 128.25	ROCKFORD APP CON 121.0 327.0	JANESVILLE TOWER ★ 118.8(CTAF) 225.4	GND CON 121.65	CLNC DEL 121.65	UNICOM 122.95
-----------------------	--	--	--------------------------	---------------------------	-------------------------



ALTERNATE MISSED APCH
ROCKFORD
110.8 RFD
Chan 45

R-278 098°



CATEGORY	A	B	C	D
S-ILS 32	1006-¾ 200 (200-¾)			
S-LOC 32	1900-¾ 1094 (1100-¾)	1900-1 1094 (1100-1)	1900-2½	1094 (1100-2½)
CIRCLING	1900-1¼ 1092 (1100-1¼)	1900-1½ 1092 (1100-1½)	1900-3	1092 (1100-3)
FOGAS FIX MINIMUMS (DUAL VOR RECEIVERS OR DME REQUIRED)				
S-LOC 32	1200-¾ 394 (400-¾)			
CIRCLING	1260-1 452 (500-1)	1280-1½ 472 (500-1½)	1420-2 612 (700-2)	

FAF to MAP 5.4 NM					
Knots	60	90	120	150	180
Min:Sec	5:24	3:36	2:42	2:10	1:48

ILS or LOC RWY 32

EC-3, 22 OCT 2009 to 19 NOV 2009

EC-3, 22 OCT 2009 to 19 NOV 2009