

WAAS CH <b>87006</b> <b>W22A</b>	APP CRS <b>224°</b>	Rwy Idg TDZE Apt Elev	<b>7301</b> <b>913</b> <b>913</b>
--	------------------------	-----------------------------	---

# RNAV (GPS) RWY 22

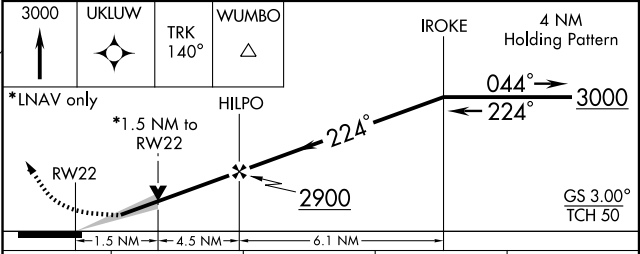
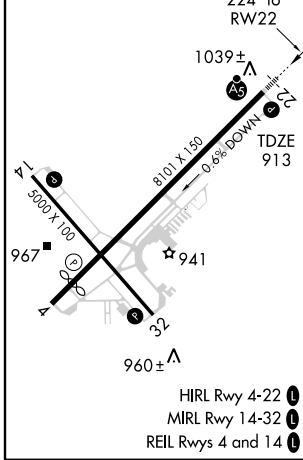
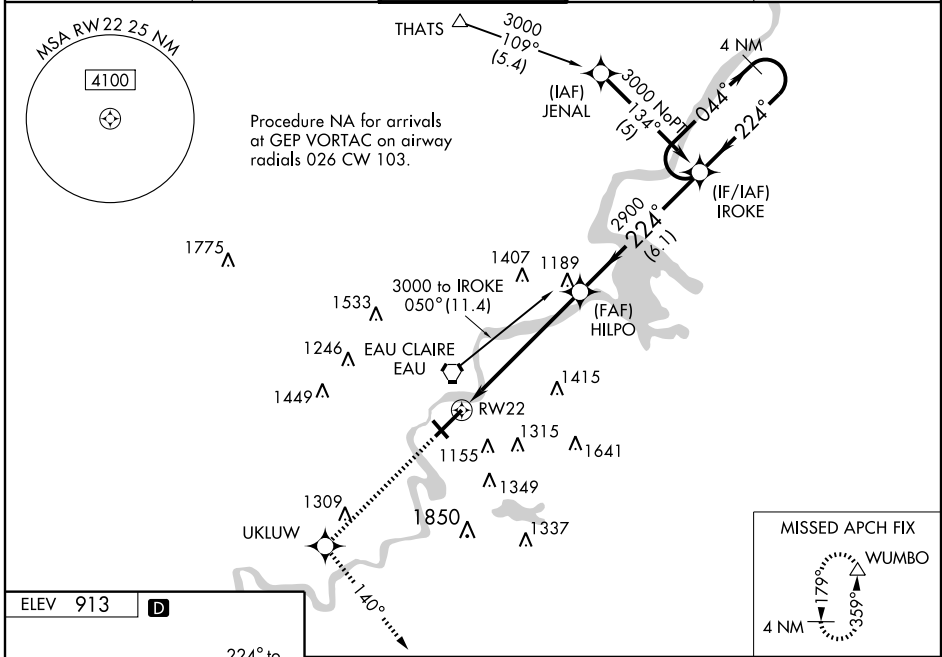
EAU CLAIRE/CHIPPEWA VALLEY RGNL (EAU)

For uncompensated Baro-VNAV systems, LNAV/VNAV NA below -16°C (4°F) or above 47°C (116°F). When local altimeter not received, use Rice Lake altimeter and increase all MDAs 120 feet, increase LPV all Cats. visibility ¼ mile, LNAV/VNAV all Cats. visibility ½ mile, LNAV Cat. C and D visibility ¼ mile, Circling Cat. C ½ mile and Cat. D ¼ mile. Baro-VNAV and VDP NA when using Rice Lake altimeter setting. DME/DME RNP-0.3 NA.



**MISSED APPROACH:**  
Climb to 3000 direct UKLUW and via 140° track to WUMBO and hold.

ASOS <b>119.675</b>	MINNEAPOLIS CENTER <b>125.3 335.6</b>	TOWER ★ <b>118.575 (CTAF) 0</b>	GND CON <b>120.925</b>	UNICOM <b>122.95</b>
------------------------	--	------------------------------------	---------------------------	-------------------------



CATEGORY	A	B	C	D
LPV DA		1183-½	270 (300-½)	
LNAV/VNAV DA		1309-¾	396 (400-¾)	
LNAV MDA	1440-½	527 (600-½)	1440-1 527 (600-1)	1440-1½ 527 (600-1½)
CIRCLING	1460-1 547 (600-1)	1500-1 587 (600-1)	1500-1½ 587 (600-1½)	1660-2½ 747 (800-2½)

EC-3, 22 OCT 2009 to 19 NOV 2009

EC-3, 22 OCT 2009 to 19 NOV 2009