

LOC/DME I-EAU <b>109.5</b> Chan <b>32</b>	APP CRS <b>224°</b>	Rwy Idg <b>7300</b> TDZE <b>913</b> Apt Elev <b>913</b>
---	------------------------	---

# ILS or LOC RWY 22

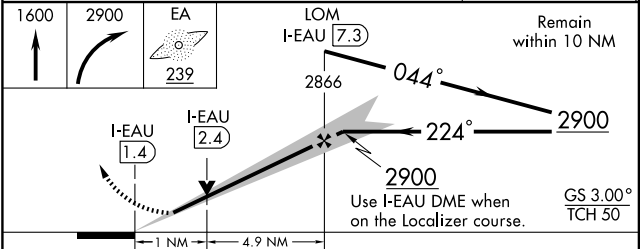
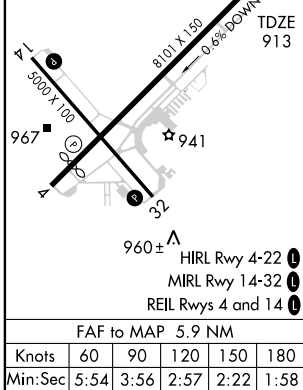
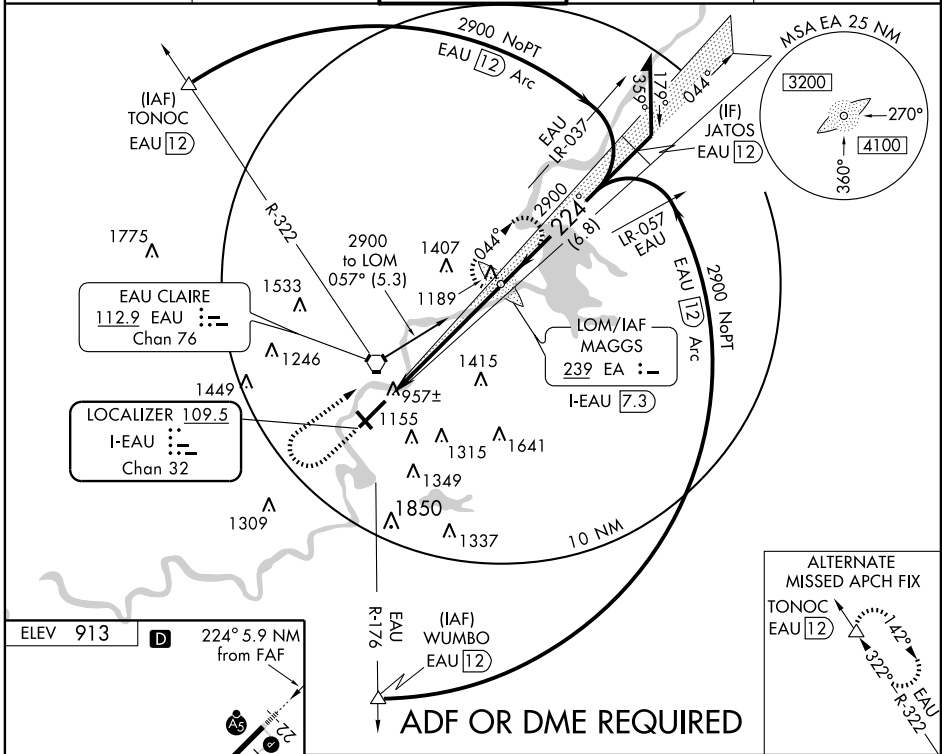
EAU CLAIRE/CHIPPEWA VALLEY RGNL (EAU)

**⚠** For inoperative MALSRS when using Rice Lake altimeter setting, increase S-ILS 22 visibility to 1 mile all Cats. When local altimeter setting not received, use Rice Lake altimeter setting and increase DA 109 feet and all MDA 120 feet, increase S-LOC 22 Cat. C and D and Circling Cat. D visibility ¼ mile and increase Circling Cat. C visibility ½ mile.



**MISSED APPROACH:** Climb to 1600 then climbing right turn to 2900 direct EA LOM and hold.

ASOS <b>119.675</b>	MINNEAPOLIS CENTER <b>125.3 335.6</b>	TOWER ★ <b>118.575 (CTAF) 0</b>	GND CON <b>120.925</b>	UNICOM <b>122.95</b>
------------------------	--	------------------------------------	---------------------------	-------------------------



CATEGORY	A	B	C	D
S-ILS 22		1113-½	200 (200-½)	
S-LOC 22		1280-½	367 (400-½)	1280-¾ 367 (400-¾)
CIRCLING	1480-1 567 (600-1)	1500-1 587 (600-1)	1500-1½ 587 (600-1½)	1660-2½ 747 (800-2½)

EC-3, 22 OCT 2009 to 19 NOV 2009

EC-3, 22 OCT 2009 to 19 NOV 2009