

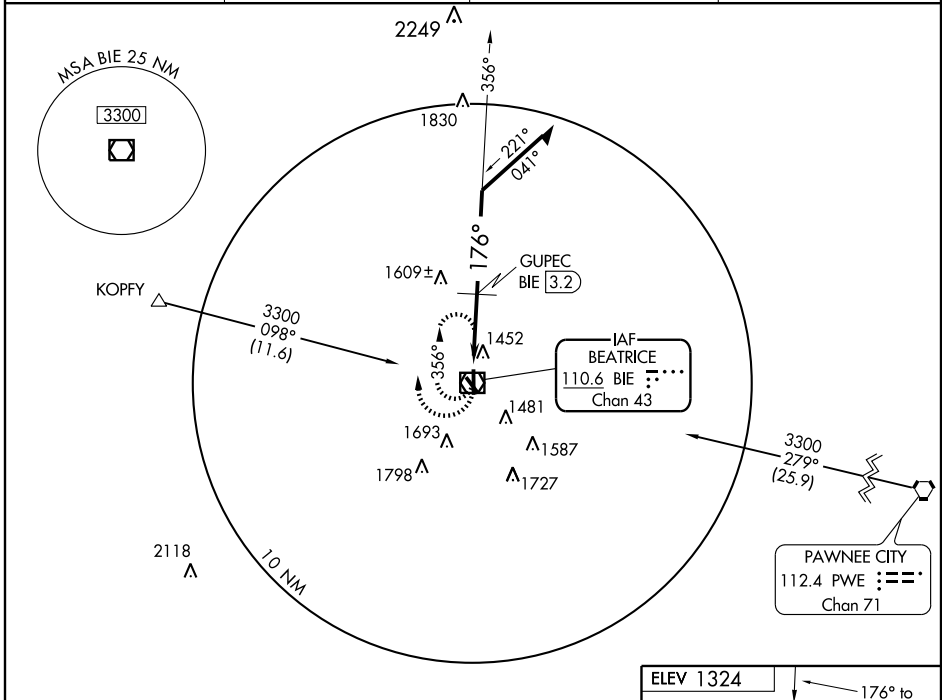
VOR/DME BIE <b>110.6</b> Chan <b>43</b>	APP CRS <b>176°</b>	Rwy Idg TDZE Apt Elev	<b>5602</b> <b>1324</b> <b>1324</b>
---	------------------------	-----------------------------	---

# VOR RWY 17

BEATRICE MUNI (BIE)

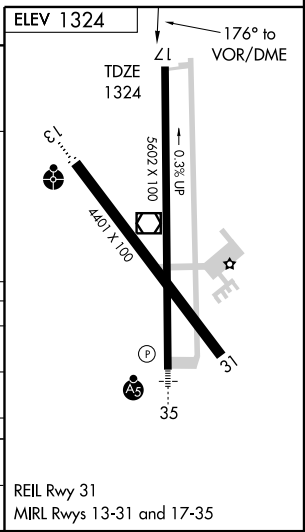
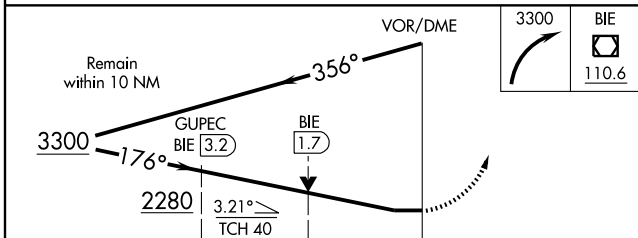
**▼** When local altimeter setting not received, procedure NA.  
**▲** MISSED APPROACH: Climbing right turn to 3300 in BIE VOR/DME holding pattern.

AWOS-3 <b>124.675</b>	MINNEAPOLIS CENTER <b>126.4 317.7</b>	COLUMBUS RADIO <b>122.5</b>	UNICOM <b>122.8 (CTAF) 0</b>
--------------------------	--	--------------------------------	---------------------------------



NC-2, 22 OCT 2009 to 19 NOV 2009

NC-2, 22 OCT 2009 to 19 NOV 2009



CATEGORY	A	B	C	D
S-17	2280-1¼ 956 (1000-1¼)	2280-1½ 956 (1000-1½)	2280-3	956 (1000-3)
CIRCLING	2280-1¼ 956 (1000-1¼)	2280-1½ 956 (1000-1½)	2280-3	956 (1000-3)
GUPEC FIX MINIMUMS				
S-17	1760-1	436 (500-1)	1760-1¼ 436 (500-1¼)	1760-1½ 436 (500-1½)
CIRCLING	1820-1	496 (500-1)	1820-1½ 496 (500-1½)	2060-2¼ 736 (800-2¼)