

# VOR RWY 13

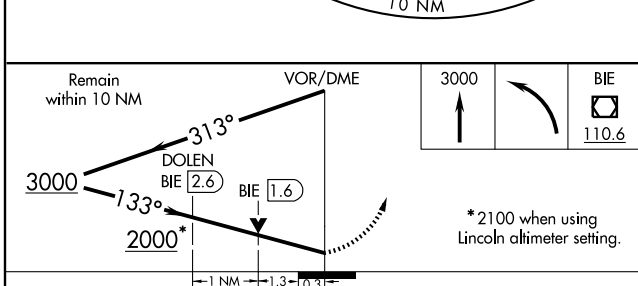
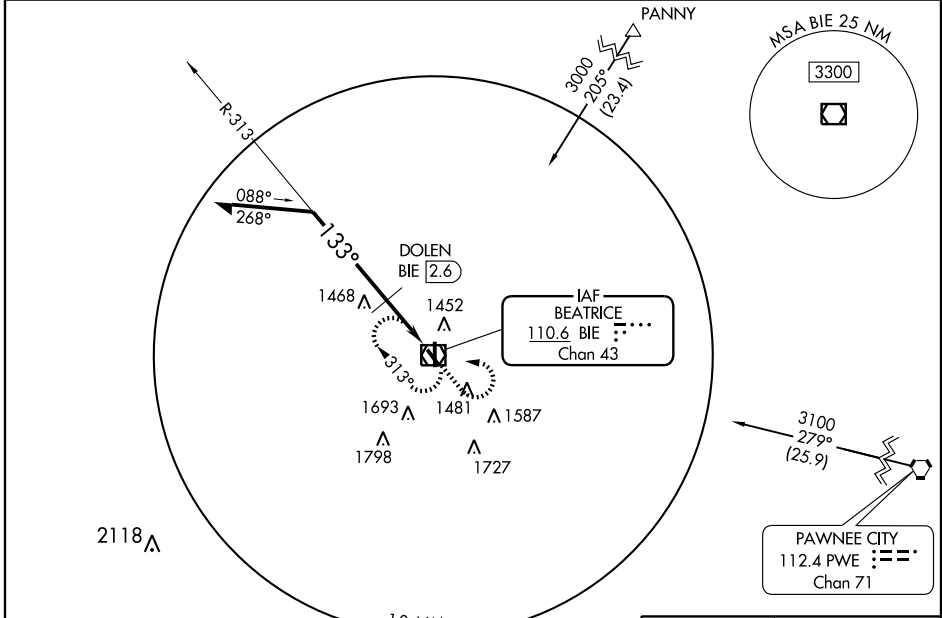
BEATRICE MUNI (BIE)

VOR/DME BIE <b>110.6</b> Chan <b>43</b>	APP CRS <b>133°</b>	Rwy Idg <b>4401</b> TDZE <b>1319</b> Apt Elev <b>1324</b>
---	------------------------	---

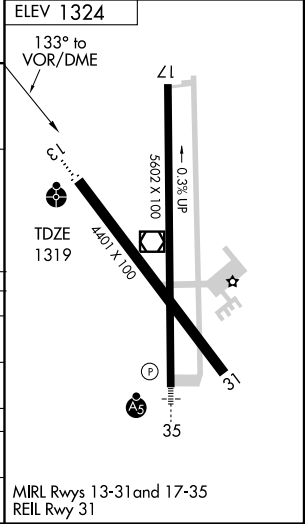
**▽** Inoperative table does not apply to S-13 Cat C. When local altimeter setting not received, use Lincoln altimeter setting; increase all MDAs 100 feet and visibility S-13 Cat B ½ mile and Cats C and D ¼ mile and circling Cats B and C ¼ mile and Cat D ½ mile, DOLEN fix minimums S-13 Cat C and D ¼ mile, and circling Cat D ½ mile. VDP NA when using Lincoln altimeter setting. Inoperative table does not apply to S-13 Cat B/C, and DOLEN fix minimums S-13 Cat C when using Lincoln altimeter setting.

**ODALS** MISSED APPROACH: Climb to 3000 then left turn direct BIE VOR/DME and hold.

AWOS-3 <b>124.675</b>	MINNEAPOLIS CENTER <b>126.4 317.7</b>	COLUMBUS RADIO <b>122.5</b>	UNICOM <b>122.8 (CTAF)</b>
--------------------------	--	--------------------------------	-------------------------------



DOLEN FIX MINIMUMS				
CATEGORY	A	B	C	D
S-13	1760-¾ 441 (500-¾)		1760-1¼ 441 (500-1¼)	1760-1½ 441 (500-1½)
CIRCLING	1820-1 496 (500-1)		1820-1½ 496 (500-1½)	2060-2¼ 736 (800-2¼)



NC-2, 22 OCT 2009 to 19 NOV 2009

NC-2, 22 OCT 2009 to 19 NOV 2009