

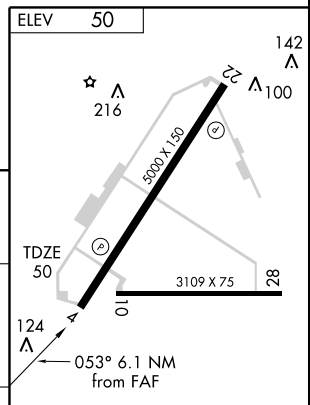
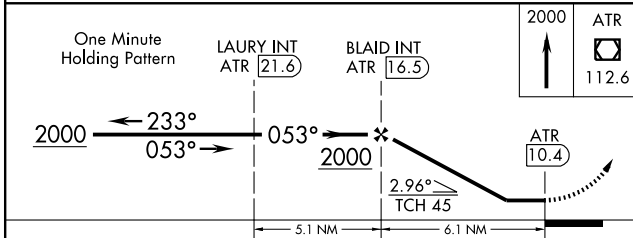
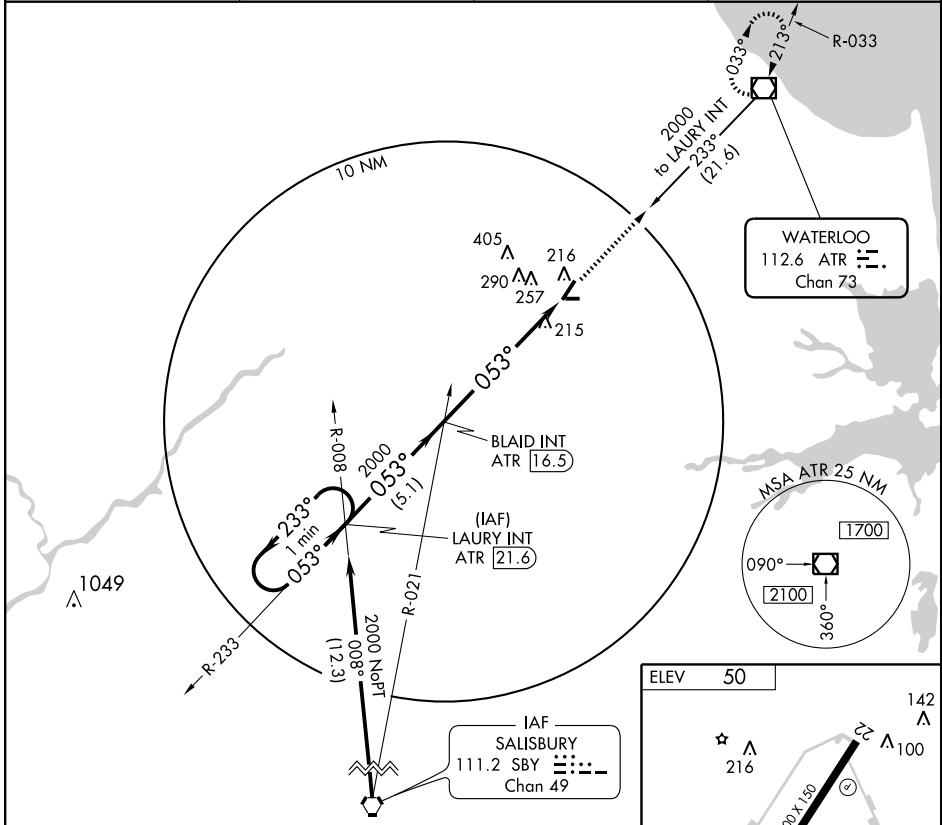
VOR RWY 4

GEORGETOWN / SUSSEX COUNTY (GED)

VOR/DME ATR 112.6 Chan 73	APP CRS 053°	Rwy ldg 5000 TDZE 50 Apt Elev 50
---	------------------------	---

NA MISSED APPROACH: Climb to 2000 direct to ATR VOR/DME and hold.

ASOS 118.375	DOVER APP CON 132.425 257.875	CLNC DEL 125.55	UNICOM 123.0 (CTAF)
------------------------	---	---------------------------	-------------------------------



CATEGORY	A	B	C	D	REIL Rws 4, 22, 10 and 28	
S-4	520-1	470 (500-1)	520-1½ 470 (500-1½)	520-1½ 470 (500-1½)	MIRL Rws 4-22 and 10-28	
CIRCLING	580-1	530 (600-1)	600-1½ 550 (600-1½)	600-2 550 (600-2)	FAF to MAP 6.1 NM	
	Knots	60	90	120	150	180
	Min:Sec	6:06	4:04	3:03	2:26	2:02

VOR RWY 4

NE-3, 22 OCT 2009 to 19 NOV 2009

NE-3, 22 OCT 2009 to 19 NOV 2009